

DRIVEN BY AIR.



Product catalogue

UK manufacturers of air line products
& tyre inflation equipment

A HORNGROUP COMPANY

www.pclairtechnology.com



Welcome to PCL

PCL has a long history of excellence as a customer-focused company, having been founded in 1938 when the very first pressure gauges were designed and manufactured in Sheffield.

Progress over the following three quarters of a century has been phenomenal, with the company becoming a familiar brand name across the world, before becoming part of the HORNGROUP of companies, along with the TECALEMIT and TECALEMIT USA brands in 2011.

Today PCL is recognised as the global market leader in the design, manufacture and distribution of the most advanced and comprehensive portfolio of tyre inflation and compressed air products. Its products are a familiar sight in international garage forecourts, tyre shops, factories and workshops.

Local service

Our dynamic and forward-thinking company continues to expand, providing first-class, reliable and cost effective products for tyre inflation and pneumatics, ensuring our customers are able to access a localised service wherever they are based. This attention to quality, constant improvement and development is reflected in our facilities in China (PCL, Shanghai) and India (PCL-SUMO, Mumbai) – further extending our international capabilities.

Helping your business prosper

It is this dedicated and pro-active approach that has established PCL as the brand of choice, with quality, high performance products designed to fit any industry need to help your business prosper. We can even help you to identify the best revenue generators for your company, for example products that get the job done quicker, meaning more revenue and profit.



After sales support

Our dedication to customers means we are not just a supplier of products, we act as a partner too, providing a full after sales service, as well as support to sell our products, such as bespoke product literature, training and product user manuals.

Highest quality standards

All pcl products are thoroughly tested; mostly to internationally recognised standards, and individually certified before they leave the factory, giving you complete peace of mind. Every product is built to last using only the highest quality components so you can be safe in the knowledge that the products are built with reliability and durability in mind.

Expert technical help

In addition, our customers have access to a full technical support hotline and site visits where necessary. Our highly experienced staff are trained to help you solve product and application problems, providing advice you can rely on.

Extensive stock

We won't keep you waiting. The PCL warehouse stocks all of the products in this catalogue and in most cases; your order is shipped the same day it is received.

No nonsense warranties

All products featured in this catalogue carry a 1 year warranty.

Why PCL? Because we are the whole package...

PCL can provide you with the best products and service available. We pride ourselves on providing a solution for every application, and every level of activity, whilst remaining true to our ethos of quality products and exceptional service.

PCL maintains a firm commitment to its roots, still manufacturing from its production facility in Sheffield, the cradle of engineering excellence. The modern factory occupies over 12,000m² and utilises the very latest production equipment. As such, PCL is proud to display the city's prestigious mark of quality and excellence on its "made in Sheffield" products.

For customers this means access to old favourites in addition to ground-breaking new products and ranges, including: electronic tyre inflation, air tool and air treatment and equipment for nitrogen applications.

Add to that a loyal and highly skilled workforce and you have a company which delivers reliable inflation and pneumatic solutions you can count on, at prices you can afford.

...an unbeatable package.

Air Tools

PCL's extensive range of air tools includes everything from impact wrenches and ratchets, to sanders and grinding tools – all designed to meet the rigorous needs of a modern workshop. Now includes the Prestige range of high quality products, providing low vibration, low noise, ergonomic grip and higher performance.





The PCL range of PRESTIGE tools offers the ultimate in performance for the serious professional user. This range of tools incorporates market leading technology aimed at making the job faster and easier. Many of the tools in this range have a lower noise and vibration output compared to other tools in the market. The PRESTIGE range of tools also has other features such as improved ergonomic grips designed to reduce fatigue during prolonged periods of usage. These tools also incorporate lightweight magnesium bodies.

3/8" 'Prestige' Impact Wrench



The smallest in PCL's range of Prestige Impact Wrenches. The 3/8" Impact Wrench is designed for professional heavy duty use, with an ergonomically designed soft grip handle and a lightweight yet highly durable magnesium body.

FEATURES

Ergonomic design for comfort	Reduced vibration
Lightweight	Twin hammer impact mechanism

PART NUMBER	MAXIMUM TORQUE (Nm)	FREE SPEED (rpm)	WEIGHT (kg)	AVERAGE AIR CONSUMPTION
APP101	271	10,000	1.28	2.7 cfm / 75 l/min

1/2" 'Prestige' 'Stubby' Impact Wrench

NEW



The new 'Stubby' impact wrench combines the same high power of a standard size impact wrench in a small, lightweight and compact housing. With 678Nm max torque, this tool will perform where others of this size can't and still allow you access to areas you normally wouldn't be able to reach.

FEATURES

Compact size - only 108.5mm, easy to operate in tight places	Energy efficient motor for maximum performance & long life
Single handed forward and reverse switch	Handle exhaust directs air away from work area and operator

PART NUMBER	MAXIMUM TORQUE (Nm)	FREE SPEED (rpm)	WEIGHT (kg)	AVERAGE AIR CONSUMPTION
APP200	678	10,000	1.3	4.5 cfm / 128 l/min

1/2" 'Prestige' Impact Wrench



PCL's Prestige 1/2" Impact Wrench utilises a compact, lightweight magnesium body ideal for tight spaces. This tool provides the user with an excellent power to weight ratio designed for fast and efficient tyre changing with minimum effort.

FEATURES

Ergonomic design for comfort	Reduced vibration
Lightweight	Twin hammer impact mechanism

PART NUMBER	MAXIMUM TORQUE (Nm)	FREE SPEED (rpm)	WEIGHT (kg)	AVERAGE AIR CONSUMPTION
APP201	433	10,000	1.29	2.7 cfm / 75 l/min

Also available: [APA51](#) - 5" Extension Bar

1/2" 18v Lithium-ion Cordless Impact Wrench

A professional quality tool which combines exceptional power and durability in a lightweight and compact size. Features the best Lithium-ion battery technology available which lasts up to three times longer than any other battery on the market.

FEATURES

Voltage: 18.0 V d.c (3.0 A.h)

Externally replaceable carbon brush motor

Capability (example): A fully charged battery pack can tighten and loosen 150 21 mm wheel nuts

Comes complete with two batteries, battery charger pack and professional carry/storage case

Charging Time: 1 hour from flat (Auto cut off facility)

PART NUMBER	MAXIMUM TORQUE (Nm)	IMPACTS PER MINUTE	FREE SPEED (rpm)	WEIGHT (kg)	VIBRATION
APC218/2B	542	2,300	1,800	2.9	589

Also available: [APA218](#) - 18v 3.0 Battery
[APA218/BC](#) - 3.0 Battery Charger



1/2" 'Prestige' TURBO Impact Wrench

Introducing the new 'TURBO' 1/2" Impact Wrench from PCL's ever popular range of Prestige air tools. This new wrench supersedes the previously best-selling APP203 by re-mapping the internal parts to give a nut crunching 1,058 Nm of torque in reverse.



FEATURES

Ergonomic warm grip handle design for extra comfort

Lightweight with excellent weight distribution

Low vibration

Twin hammer impact mechanism

'TURBO' power

PART NUMBER	MAXIMUM TORQUE (Nm)	FREE SPEED (rpm)	WEIGHT (kg)	AVERAGE AIR CONSUMPTION
APP203T	1,058	7,700	1.94	4.7 cfm / 133 l/min

Also available: [APA51](#) - 5" Extension Bar

Air Tools

Air Tool Accessories

Nitrogen Inflation Equipment

Tyre Inflation Equipment

Tyre Care

Workshop Accessories

Hose

Hose Fittings

Couplings & Adaptors

1" 'Prestige' Impact Wrench



Featuring an improved torque output whilst still maintaining its low weight characteristics makes this new 1" impact wrench the new tool of choice replacing the popular APP270. Boasting a large increase in power with a minimal increase in weight it provides the user with the perfect 1" impact wrench.

FEATURES

Supreme power to weight ratio – 2,712 Nm @ 7 kg

Twin hammer mechanism provides the ultimate in power

Single mounted handle for better control

Swivel air inlet prevents hose kinking

Low vibration for added comfort and safety

PART NUMBER	MAXIMUM TORQUE (Nm)	FREE SPEED (rpm)	WEIGHT (kg)	AVERAGE AIR CONSUMPTION
APP271	2,712	6,500	7	10 cfm / 283 l/min

3/4" 'Prestige' Impact Wrench



Building on PCL's leading Prestige range of Air Tools, this 3/4" Impact Wrench provides the professional user with a lightweight, low vibration yet high powered product. Ideal for changing the larger tyre where a high level of torque is required.

FEATURES

Ergonomic design for comfort

Swivel inlet

Lightweight

Twin hammer impact mechanism

Reduced vibration

PART NUMBER	MAXIMUM TORQUE (Nm)	FREE SPEED (rpm)	WEIGHT (kg)	AVERAGE AIR CONSUMPTION
APP234	1,490	5,500	5.2	7.2 cfm / 204 l/min

Also available: [APA50](#) - 5" Extension Bar

3/8" 'Prestige' Ratchet



PCL's Prestige Ratchet features a soft grip handle and a compact, robust operating lever with adjustable exhaust. This tool also offers a fast run down speed and easy speed control, providing the user with everything they would want from a high performance Ratchet.

FEATURES

Fast run down speed

Maximum torque: 95 Nm

Lightweight

Easy speed control

Reduced vibration

PART NUMBER	MAXIMUM TORQUE (Nm)	FREE SPEED (rpm)	WEIGHT (kg)	AVERAGE AIR CONSUMPTION
APP310	95	160	1.26	2.6 cfm / 73.6 l/min

3/8" 'Prestige' Lumhammer Ratchet



PCL's new 'lumhammer' ratchet combines an impact wrench with an air ratchet. The combination of 258 Nm of torque with the long reach access to tight spaces means you can now use the 'lumhammer' for a large number of applications that a standard ratchet simply will not do.

FEATURES

Ergonomic warm grip handle design for extra comfort

Lightweight with excellent weight distribution

Jumbo hammer impact mechanism

258 Nm of 'lumhammer' power

PART NUMBER	MAXIMUM TORQUE (Nm)	FREE SPEED (rpm)	WEIGHT (kg)	AVERAGE AIR CONSUMPTION
APP340	258	4,150	1.57	3.3 cfm / 93 l/min

NEW

'Prestige' Die Grinder Set

Featuring all the attributes of PCL's Prestige range of Air Tools, including reduced vibration and non slip grip. This Die Grinder also incorporates a swivel rear exhaust, speed regulator and a safety lever. Comes complete with hardened plastic case and a selection of accessories.

FEATURES

Swivel rear exhaust	Speed regulator
Double bearing spindle	Reduced vibration

PART NUMBER	COLLET SIZE (mm)	FREE SPEED (rpm)	WEIGHT (kg)	AVERAGE AIR CONSUMPTION
APP700SET	6	20,000	0.55	4 cfm / 113 l/min

Replacements available: **AP5700/CLT** - 6 mm Collet
AP5700/CLT3 - 3 mm Collet



'Prestige' Air Body Saw

This very light Air Body Saw weighing in at around 0.5 kg is perfect for the regular user looking for a professional body saw. Features include low vibration, high cutting capacity and adjustable rear exhaust for precision cutting under maximum control.

FEATURES

Low vibration	High cutting capacity
Lightweight	Adjustable rear exhaust

PART NUMBER	CUTTING CAPACITY (mm)	STROKE LENGTH (mm)	WEIGHT (kg)	VIBRATION (m/s ²)
APP600	1.2	10	0.65	1.59

Also available: **APT32** - Pack of 5 Saw Blades



3" 'Prestige' Cut Off Tool

With a high quality composite construction, complete with speed regulator and non slip grip, this high performance Cut Off Tool also features a double bearing spindle, rear swivel exhaust and speed regulator - giving the user ultimate control.

FEATURES

Swivel rear exhaust	Speed regulator
Double bearing spindle	Reduced vibration

PART NUMBER	DISC DIAMETER (mm)	FREE SPEED (rpm)	WEIGHT (kg)	AVERAGE AIR CONSUMPTION
APP708	75	21,000	0.8	3 cfm / 85 l/min

Also available: **APT75FCM** - Pack of 3" Cutting Discs



6" 'Prestige' Palm Sander

Featuring a built in speed regulator for optimised control, a central vacuum type and low noise output for the serious professional. This sander has a super lightweight and soft feel - ideal for frequent use.

FEATURES

Random orbit for swirl free finishes	Built in regulator for optimised power control
Reduced vibration	Central vacuum type

PART NUMBER	FREE SPEED (rpm)	PAD SIZE (in)	ORBIT DIAMETER	AVERAGE AIR CONSUMPTION
APP760	12,000	6	5 mm	2.5 cfm / 70.6 l/min

Also available: **APT90A** - 6" Self Adhesive Backing Pad
APT90V - 6" Velcro Backing Pad



10mm 'Prestige' Reversible Air Drill



From the Prestige range of high end tools, this product features a magnesium body, incorporating a lightweight feel and high power output.

FEATURES

Magnesium body	Triple planetary gear system
Rear exhaust through handle	Ideal for drilling, reaming and honing
3/8 in / 10 mm Jacobs keyless chuck	

PART NUMBER	CHUCK SIZE (mm)	FREE SPEED (rpm)	WEIGHT (kg)	AVERAGE AIR CONSUMPTION
APP405	10	1,800	1.16	4.29 cfm / 121.4 l/min

Replacement chucks also available: [APS401R/KCK](#) - Keyless Chuck

'Prestige' Screwdriver



From the Prestige range of high end tools, this product features a magnesium body, incorporating a lightweight feel and high power output.

FEATURES

High performance motor maximises output speed	Externally adjustable torque range from 1-12 Nm
Feather trigger mechanism for precision work	Rear exhaust
Durable bit holder	One finger forward/reverse switch

PART NUMBER	CHUCK SIZE	FREE SPEED (rpm)	WEIGHT (kg)	AVERAGE AIR CONSUMPTION
APP409	1/4 in Hex	1,800	1.23	5 cfm / 140 l/min

'Prestige' De-scaling Tool Set



PCL's Prestige De-scaling tool features the option of using the tool as an Air Hammer or as a Needle Scaler with all the attachments and accessories in one case.

FEATURES

Reduced vibration	Unique balanced design
Swivel inlet	Quick change retainer

PART NUMBER	BLOWS PER MINUTE	WEIGHT (kg)	VIBRATION (m/s ²)	AVERAGE AIR CONSUMPTION
APP50SET	2,900	1.73	4.84	2.73 cfm / 77 l/min

2 & 3" 'Prestige' Pistol Sander Set



Ideal for pre-paint preparation in either tight spaces or on small body parts. Also ideal for alloy wheel refurbishment and general cleaning/sanding in the smart repair/bodyshop industry.

FEATURES

3 mm random orbit for a swirl free finish	Low vibration and low noise performance for safety and comfort in use
Safety speed regulator locks in motion to prevent accidental speed change during use	2 in and 3 in interchangeable Velcro backing pad and 3 grades of sanding paper for each size included for maximum versatility

PART NUMBER	PAD SIZE (in)	FREE SPEED (rpm)	WEIGHT (kg)	AVERAGE AIR CONSUMPTION
APP770SET	2 & 3	16,000	0.81	2.6 cfm / 73.6 l/min

Also available: [APP103](#) - 30x 3" Sandpaper Discs

3" 'Prestige' Pistol Polisher Set

Ideal for post-paint polishing in tight spaces or for general bodywork to give a shiny and glossy finish.

FEATURES

2,100 rpm for low speed fine polishing	3 in Velcro backing pad for quick change sponge and lambswool pads
Safety speed regulator locks in motion to prevent accidental speed change during use	3.5 in accessories overlap backing pad to prevent unwanted contact with the bodywork
Efficient powerful motor for high volume, professional applications	Replacement accessory packs also available
Low vibration and low noise performance for safety and comfort in use	



PART NUMBER	PAD SIZE (in)	FREE SPEED (rpm)	WEIGHT (kg)	AVERAGE AIR CONSUMPTION
APP780SET	3	2,100	0.81	2.6 cfm / 73.6 l/min

Also available: [APA92](#) - 3" Air Buffing Kit

3" Pistol Surface Prep Set

Ideal for surface preparation prior to sanding. Cleans areas of harder dirt and rust before fine sanding takes place. Could also be used for alloy wheel refurbishment and general cleaning/sanding in the smart repair/bodyshop industry.

FEATURES

16,000 rpm for efficient sanding/cleaning	3 in female screw lock backing pad
Safety speed regulator locks in motion to prevent accidental speed change during use	3 grades of male screw lock sanding paper and 3 grades of male screw lock conditioning pads included for maximum versatility
Efficient powerful motor for high volume, professional applications	Replacement accessory packs also available
Low vibration and low noise performance for safety and comfort in use	



PART NUMBER	PAD SIZE (in)	FREE SPEED (rpm)	WEIGHT (kg)	AVERAGE AIR CONSUMPTION
APP790SET	3	16,000	0.81	2.5 cfm / 71 l/min

Also available: [APA104](#) - 3" Replenish Kit

1/2" 'Economy' Impact Wrench

This economy impact wrench is well suited to occasional workshop use and when budget is of importance.

FEATURES

Maximum torque: 352 Nm	Forward and reverse mode
Pin clutch hammer mechanism	Progressive throttle

PART NUMBER	MAXIMUM TORQUE (Nm)	FREE SPEED (rpm)	WEIGHT (kg)	AVERAGE AIR CONSUMPTION
APL001	352	7,000	2.1	4.2 cfm / 119 l/min

Also available: [APL001K](#) - Includes Sockets and Accessories in a Case



Air Tools

Air Tool Accessories

Nitrogen Inflation Equipment

Tyre Inflation Equipment

Tyre Care

Workshop Accessories

Hose

Hose Fittings

Couplings & Adaptors

3/8" Impact Wrench



Designed for bench work, small engine and body repairs, ignitions, body panels or transmissions.

FEATURES

Single hammer mechanism

Handle exhaust

Forward and reverse mode

PART NUMBER	DRIVE (in)	MAXIMUM TORQUE (Nm)	WEIGHT (kg)	AVERAGE AIR CONSUMPTION
APT105	3/8	102	1.25	3 cfm / 85 l/min

1/2" Impact Wrench



General purpose Impact Wrench.

FEATURES

General purpose impact wrench

Forward and reverse mode

Pin clutch hammer mechanism

Excellent balance

PART NUMBER	MAXIMUM TORQUE (Nm)	FREE SPEED (rpm)	WEIGHT (kg)	AVERAGE AIR CONSUMPTION
APT205	540	7,500	2.4	3.6 cfm / 102 l/min

Also available: [APT205SET](#) - Includes Sockets and Carry Case

1/2" Impact Wrench



This twin hammer powered 1/2" Impact Wrench utilises a standard aluminium body with the most modern impact mechanism to deliver 594 Nm maximum torque. Designed for all general purpose fastener work.

FEATURES

Excellent balance

High torque output

Good power to weight ratio

Modern and reliable impact mechanism

PART NUMBER	MAXIMUM TORQUE (Nm)	FREE SPEED (rpm)	WEIGHT (kg)	AVERAGE AIR CONSUMPTION
APT208	594	8,000	2.6	3.9 cfm / 110 l/min

Also available: [APT208SET](#) - Includes Sockets and Carry Case

1/2" Composite Impact Wrench



Delivering 800 Nm of torque, this composite 1/2" Impact Wrench is a popular choice for more demanding tasks.

FEATURES

Twin hammer mechanism

Excellent power to weight ratio

Fully insulated handle/housing

Progressive throttle

PART NUMBER	MAXIMUM TORQUE (Nm)	FREE SPEED (rpm)	WEIGHT (kg)	AVERAGE AIR CONSUMPTION
APT233	800	8,000	1.95	4.8 cfm / 136 l/min

3/4" Impact Wrench

The APT230 is ideal for truck bus and farm machinery work, with a single handed direction change advantage and a non-slip comfortable grip for users.

FEATURES

Pin clutch hammer mechanism	3 forward and 3 reverse operating impact settings
Rear exhaust through handle	Maximum torque: 1,350 Nm

PART NUMBER	MAXIMUM TORQUE (Nm)	FREE SPEED (rpm)	WEIGHT (kg)	AVERAGE AIR CONSUMPTION
APT230	1,350	4,000	4.5	10 cfm / 282 l/min



1" Impact Wrench

The APT263 is a powerful heavy duty wrench with 3 forward power settings. Its powerful nature means there is a useful side handle available for safety and ease of manoeuvrability purposes.

FEATURES

Twin hammer mechanism	Rear exhaust through handle
200 mm extended shank	Maximum torque: 2,445 Nm

PART NUMBER	MAXIMUM TORQUE (Nm)	FREE SPEED (rpm)	WEIGHT (kg)	AVERAGE AIR CONSUMPTION
APT263	2,445	5,000	11.5	8.4 cfm / 102 l/min



1" Pistol Grip Impact Wrench

Designed for spring work; maintenance of buses, trucks and farm machinery; truck tyre work and heavy industrial applications.

FEATURES

Maximum torque: 2,445 Nm	Excellent balance
Great durability	Side handle for operator comfort
Twin hammer mechanism	Rugged design

PART NUMBER	DRIVE (in)	MAXIMUM TORQUE (Nm)	WEIGHT (kg)	AVERAGE AIR CONSUMPTION
APT265	1	2,445	8.93	11 cfm / 317 l/min



MEGA TORQUE

1" 'Hercules' Impact Wrench

The most powerful impact wrench in PCL's range, the 1" 'Hercules' Impact Wrench boasts a massive 3,390 Nm of power. Suitable for heavy trucks and commercial vehicles, there isn't much this tool cannot handle.

FEATURES

Maximum torque: 3,390 Nm	Strong and durable materials
Suitable for heavy machinery, major engine tear-downs, HGV and truck wheel nuts.	8" extended shank anvil

PART NUMBER	MAXIMUM TORQUE (Nm)	FREE SPEED (rpm)	WEIGHT (kg)	AVERAGE AIR CONSUMPTION
APT266	3,390	4,300	13.07	9.5 cfm / 265 l/min



Air Tools

Air Tool Accessories

Nitrogen Inflation Equipment

Tyre Inflation Equipment

Tyre Care

Workshop Accessories

Hose

Hose Fittings

Couplings & Adaptors

10mm Reversible Air Drill



The APT401R has a triple planetary gear system and positive trigger action for ease of use.

FEATURES

Rear exhaust through handle	Ideal for drilling, reaming and honing
Side mounted forward/reverse shift	Keyless chuck supplied as standard

PART NUMBER	CHUCK SIZE (mm)	FREE SPEED (rpm)	WEIGHT (kg)	AVERAGE AIR CONSUMPTION
APT401R	10	1,800	1.2	3.8 cfm / 107 l/min

Replacement chucks also available: [APS401R/KCK](#) - Keyless Chuck

10mm Air Drill



The APT401 has a powerful air motor letting the user know that it means business.

FEATURES

Rear exhaust through handle	Positive trigger action
Triple planetary gear system	Keyless chuck supplied as standard

PART NUMBER	CHUCK SIZE (mm)	FREE SPEED (rpm)	WEIGHT (kg)	AVERAGE AIR CONSUMPTION
APT401	10	2,500	1.2	3.8 cfm / 107 l/min

Replacement chucks also available: [APS401R/KCK](#) - Keyless Chuck

10mm Angle Drill



Designed for cabinet work, window frame manufacture, puncture repair, reaming, honing and general drilling requirements.

FEATURES

Angle head for easy access	Powerful air motor
3/8 in (10 mm) chuck	Positive throttle
Rear exhaust	Ideal for drilling, reaming and honing

PART NUMBER	CHUCK SIZE (mm)	FREE SPEED (rpm)	WEIGHT (kg)	AVERAGE AIR CONSUMPTION
APT402	10	1,700	1.39	4 cfm / 113 l/min

3/8" Ratchet



The APT320 has a forward and reverse mechanism on the ratchet head for ease of use.

FEATURES

Forward/reverse knob on the ratchet head	Ball type retainer
Maximum torque: 60 Nm	Progressive throttle

PART NUMBER	MAXIMUM TORQUE (Nm)	FREE SPEED (rpm)	WEIGHT (kg)	AVERAGE AIR CONSUMPTION
APT320	60	150	1.2	3.6 cfm / 101 l/min

Also available: [APT320SET](#) - Includes Sockets and Carry Case

1/2" Ratchet

Suitable for exhaust work, radiators, water pumps, fuel pumps, under dashboard work, small engine work and all small fasteners.

FEATURES

Maximum torque: 60 Nm	Easy speed control
Forward/reverse knob on the ratchet	Progressive throttle
Ball type retainer	Accommodates larger socket range

PART NUMBER	MAXIMUM TORQUE (Nm)	FREE SPEED (rpm)	WEIGHT (kg)	AVERAGE AIR CONSUMPTION
APT330	60	150	1.2	3.6 cfm / 101 l/min



Air Hammer

General purpose - ideal for body shop, rust removal, etc.

FEATURES

3,000 blows per minute	Rear exhaust through handle
3 mm stroke length	Coiled spring chisel retainer
10-11 mm shank opening	Positive action trigger

PART NUMBER	BLOWS PER MINUTE	WEIGHT (kg)	VIBRATION (m/s ²)	AVERAGE AIR CONSUMPTION
APT517	3,000	1.6	3.75	6.2 cfm / 176 l/min

Also available: [APT517SET](#) - Includes Chisels and Carry Case
[APT20](#) - Pack of 5 Chisels



10mm Belt Sander

Designed for metal work fabrication, general sheet metal work and general sanding applications. Ideal for those looking for a price competitive tool without compromising quality or performance.

FEATURES

Optimal positioning due to rotating handle	Adjustable sanding arm
Rear exhaust through handle	Mechanism for quick and easy belt exchange

PART NUMBER	BELT SIZE (mm)	FREE SPEED (rpm)	WEIGHT (kg)	AVERAGE AIR CONSUMPTION
APT755	10 x 330	16,000	0.9	2.5 cfm / 70 l/min



20mm Belt Sander

Designed for metal work fabrication, general sheet metal work and general sanding applications. Ideal for those looking for a price competitive tool without compromising quality or performance.

FEATURES

Optimal positioning due to rotating handle	Adjustable sanding arm
Rear exhaust through handle	Mechanism for quick and easy belt exchange

PART NUMBER	BELT SIZE (mm)	FREE SPEED (rpm)	WEIGHT (kg)	AVERAGE AIR CONSUMPTION
APT756	20 x 480	18,000	1.2	3.8 cfm / 107.6 l/min



Air Screwdriver



Ideal for the everyday tradesman who requires a price competitive tool without compromising quality or performance.

FEATURES

Maximum torque: 17 Nm
 Spring compression determines torque setting

Rear exhaust through handle
 Sensitive trigger mechanism

PART NUMBER	CHUCK SIZE	FREE SPEED (rpm)	WEIGHT (kg)	AVERAGE AIR CONSUMPTION
APT407	1/4 in Hex	1,800	1.2	4 cfm / 113 l/min

Straight Air Screwdriver



Designed for use in cabinet work, window frame manufacture, puncture repair, jig work, bench work, and general screwdriver work.

FEATURES

High torque
 Spring compression determines torque setting

Rear exhaust through handle
 Sensitive trigger mechanism

PART NUMBER	CHUCK SIZE	FREE SPEED (rpm)	WEIGHT (kg)	AVERAGE AIR CONSUMPTION
APT408	1/4 in Hex	1,700	1.2	4 cfm / 113 l/min

6" Die Grinder



The APT702 has a safety lever for users whilst working, additionally its small size makes it versatile and practical in small and confined working spaces.

FEATURES

Medium motor size
 6mm collet (3 piece design)

Rear exhaust through handle
 High velocity

PART NUMBER	COLLET SIZE (mm)	FREE SPEED (rpm)	WEIGHT (kg)	AVERAGE AIR CONSUMPTION
APT702	6	22,000	0.6	3 cfm / 85 l/min

Also available: [APT702SET](#) - Includes Accessories and Carry Case

Tyre Buffer



Designed for buffing and cleaning of tyres and preparation when retreading.

FEATURES

Very light at only 0.8 kg
 Quick change retainer with accessory adapter
 Safety lever

Low average air consumption of 3.7 cfm
 Protective whip hose with speed regulator built-in

PART NUMBER	SPINDLE THREAD (in)	FREE SPEED (rpm)	WEIGHT (kg)	AVERAGE AIR CONSUMPTION
APT740	7/16	3,600	0.8	3.7 cfm / 104.8 l/min

4" Angle Grinder

Designed for metal work fabrication, general cutting and grinding of steel and stone, this tool is ideal for the everyday tradesman who requires a price competitive tool without compromising performance.

FEATURES

Power motor	Excellent performance and durability
Side handle for operator comfort	4 in cutting capacity

PART NUMBER	DISC SIZE (in)	FREE SPEED (rpm)	WEIGHT (kg)	AVERAGE AIR CONSUMPTION
APT715	4	12,000	2	6 cfm / 170 l/min



Air Tools

Air Tool Accessories

Nitrogen Inflation Equipment

Tyre Inflation Equipment

Tyre Care

Workshop Accessories

Hose

Hose Fittings

Couplings & Adaptors

7" Angle Grinder

Designed for metal work fabrication, general cutting and grinding of steel and stone, this tool is ideal for the everyday tradesman who requires a price competitive tool without compromising performance.

FEATURES

Power motor	Excellent performance and durability
Side handle for operator comfort	7 in cutting capacity

PART NUMBER	DISC SIZE (in)	FREE SPEED (rpm)	WEIGHT (kg)	AVERAGE AIR CONSUMPTION
APT716	7	7,600	3.5	5.3 cfm / 149 l/min



Air Body Saw

Its high cutting performance and well balanced design, the APT650 is able to reach a 1.6 mm cutting capacity with ease.

FEATURES

Ideal for body and metal workshops	Safety throttle lever
Insulated handle and anti-vibration cover	Suitable for universal blades

PART NUMBER	CUTTING CAPACITY (mm)	STROKE LENGTH	WEIGHT (kg)	AVERAGE AIR CONSUMPTION
APT650	1.6	10 mm	0.7	1 cfm / 28 l/min

Also available: [APT32](#) - Pack of 5 Saw Blades



3" Cut Off Tool

The APT719 works with cutting disks of 75 mm in diameter confirming its ability to work efficiently in small confined spaces.

FEATURES

For light cutting tasks	Positive throttle action with safety feature
Rear exhaust through handle	Metal safety guard

PART NUMBER	DISC DIAMETER (mm)	FREE SPEED (rpm)	WEIGHT (kg)	AVERAGE AIR CONSUMPTION
APT719	75	20,000	1	4.6 cfm / 130 l/min

Also available: [APT75FCM](#) - Pack of 3" Cutting Discs



Metal Shear



Designed for metal work fabrication and general sheet metal cutting. Ideal for those looking for a price competitive tool without compromising quality or performance.

FEATURES

Ergonomic handle for operator comfort
 Heavy duty cutting blades for long life and reliable cutting

Handle exhaust
 Fast cutting action

PART NUMBER	CUTTING CAPACITY	FREE SPEED (rpm)	WEIGHT (kg)	AVERAGE AIR CONSUMPTION
APT670	18 gauge / 1.2 mm	2,000	2.2	4 cfm / 113 l/min

Nibbler



Designed for metal work fabrication and general sheet metal cutting. Ideal for those looking for a price competitive tool without compromising quality or performance.

FEATURES

Push cutting operation
 Ideal for tight spaces and intricate shapes

Quick change punch and die
 Powerful motor

PART NUMBER	CUTTING CAPACITY	FREE SPEED (rpm)	WEIGHT (kg)	AVERAGE AIR CONSUMPTION
APT660	18 gauge / 1.2 mm	2,500	0.8	3.5 cfm / 99 l/min

6" Orbital Sander



Two handed operation with built in speed regulator.

FEATURES

Two handed operation
 Rear exhaust

Random orbit for swirl free finishes
 Positive lever action

PART NUMBER	PAD SIZE (mm)	ORBIT DIAMETER	FREE SPEED (rpm)	AVERAGE AIR CONSUMPTION
APT720	150	8 mm	10,000	3.5 cfm / 100 l/min

Also available: [APT90A](#) - Self Adhesive Backing Pad
[APT90V](#) - Velcro Backing Pad

Needle Scaler



Ideal for surface preparation.

FEATURES

Rugged design
 Straight handle

Hardened self adjusting needles

PART NUMBER	BLOWS PER MINUTE	WEIGHT (kg)	VIBRATION (m/s ²)	AVERAGE AIR CONSUMPTION
APT561	4,600	2.6	6.67	6.6 cfm / 186 l/min

Also available: [APS561/NST](#) - Replacement Needles

Air Riveter

Designed for metal work fabrication and general sheet metal hole punching.

FEATURES

Ergonomic design for operator comfort	3/16 in maximum capacity
Lightweight aluminum material	Low average air consumption

PART NUMBER	CUTTING CAPACITY (in)	WEIGHT (kg)	VIBRATION (m/s ²)	AVERAGE AIR CONSUMPTION
APT690	3/16	1.6	1.3	4 cfm / 113 l/min



Air Grease Gun

Simplifies the task of lubrication providing superior flow control with the convenience of fully automatic operation.

FEATURES

Pistol grip and single pulse trigger	Angled design
Grease applied under steady pressure	Die cast body and head

PART NUMBER	CARTRIDGE LOAD (oz)	BULK LOAD (cc)	WEIGHT (kg)	MINIMUM HOSE DIAMETER (mm)
APT813	14	400	1.5	10



Mini 1/4" Ratchet

This Mini 1/4" Ratchet is ideal for 'running up' in those hard to reach places where quarter turns of a hand ratchet takes far too long.

FEATURES

Palm size Ratchet allows the operator to reach small areas	Maximum bore hose to be used: 3/16 in (4.8 mm)
Designed for 'running up' nuts only - not to be used as a hand wrench	High power motor for consistent performance, 34 Nm of torque

PART NUMBER	DRIVE (in)	FREE SPEED (rpm)	WEIGHT (kg)	AVERAGE AIR CONSUMPTION
APT903	1/4	300	0.49	1.8 cfm / 50 l/min



Mini 3/8" Ratchet

This Mini 3/8" Ratchet is ideal for 'running up' in those hard to reach places where quarter turns of a hand ratchet takes far too long.

FEATURES

Palm size Ratchet allows the operator to reach small areas	Maximum bore hose to be used: 3/16 in (4.8 mm)
Designed for 'running up' nuts only - not to be used as a hand wrench	High power motor for consistent performance, 34 Nm of torque

PART NUMBER	DRIVE (in)	FREE SPEED (rpm)	WEIGHT (kg)	AVERAGE AIR CONSUMPTION
APT906	3/8	300	0.49	1.8 cfm / 50 l/min



Air Tools

Air Tool Accessories

Nitrogen Inflation Equipment

Tyre Inflation Equipment

Tyre Care

Workshop Accessories

Hose

Hose Fittings

Couplings & Adaptors

Mini 6" Straight Die Grinder



This Mini Straight Die Grinder enables the user to get into small areas where conventional products wouldn't necessarily be able to reach.

FEATURES

Allows the operator to reach into very small areas

Maximum bore hose to be used:
3/16 in (4.8 mm)

Safety lever helps prevent potential accidents

High power motor designed for all tight grinding situations

PART NUMBER	COLLET SIZE (mm)	FREE SPEED (rpm)	WEIGHT (kg)	AVERAGE AIR CONSUMPTION
APT901	6	25,000	0.34	1.68 cfm / 47.6 l/min

Also available: [APS901/CLT](#) - Replacement 6 mm Collet

Mini 2" & 3" Sander



These Mini Sander are designed specifically for smart repair specialists and intricate bodyshop work when removing scratches, ground in dirt and imperfections in small areas.

FEATURES

Small sanding pad allows the operator to reach small areas

Maximum bore hose to be used:
3/16 in (4.8 mm)

Random orbit allows maximum operator control and finish

PART NUMBER	PAD SIZE (in)	FREE SPEED (rpm)	WEIGHT (kg)	AVERAGE AIR CONSUMPTION
APT902	2	16,500	0.34	1.83 cfm / 51.8 l/min
APT909	3	16,500	0.38	1.83 cfm / 51.8 l/min

Also available: [APA95](#) - 50 mixed grade sandpaper discs

Mini 10mm Straight Drill



This Mini 10mm Straight Drill offers the ability to drill holes in very tight spaces where a conventional pistol drill simply can not reach.

FEATURES

Allows the operator to reach small areas

Maximum bore hose to be used:
3/16 in (4.8 mm)

Compact and lightweight design allows maximum operator control and performance

Standard 10 mm size allows the user to use conventional drill bits

PART NUMBER	CHUCK SIZE (mm)	FREE SPEED (rpm)	WEIGHT (kg)	AVERAGE AIR CONSUMPTION
APT904	10	6,000	0.43	1.68 cfm / 48 l/min

Mini 2" Angle Grinder



This Mini 2" Angle Grinder allows precision grinding and cutting into those hard to reach areas.

FEATURES

Palm size Grinder allows the operator to reach small areas

Maximum bore hose to be used:
3/16 in (4.8 mm)

Compact and lightweight design allows maximum operator control and performance

High power motor for consistent performance

PART NUMBER	DISC SIZE (in)	FREE SPEED (rpm)	WEIGHT (kg)	AVERAGE AIR CONSUMPTION
APT905	2	16,500	0.45	1.68 cfm / 48 l/min

Also available: [APA102](#) - 5x 2" grinding wheels

Mini 3" Angle Cutter

This Mini 3" Angle Cutter enables bodyshops to make precision cutting jobs easy with its small and lightweight features.

FEATURES

Safety lever helps prevent potential accidents	Maximum bore hose to be used: 3/16 in (4.8 mm)
Compact and lightweight design allows maximum operator control and performance	3 in high performance cutting disc for precision bodyshop work

PART NUMBER	DISC SIZE (in)	FREE SPEED (rpm)	WEIGHT (kg)	AVERAGE AIR CONSUMPTION
APT907	3	16,500	0.37	1.9 cfm / 53.8 l/min

Also available: **APT75FCM** - Pack of 3" Cutting Discs



Mini 6mm Angle Die Grinder

This Mini 6mm Angle Die Grinder enables the user to get into small areas where conventional products wouldn't necessarily be able to reach. Ideal for removing rust and grinding away dirt.

FEATURES

Allows the operator to reach into very small areas	Maximum bore hose to be used: 3/16 in (4.8 mm)
Safety lever helps prevent potential accidents	High power motor designed for all tight grinding situations

PART NUMBER	COLLET SIZE (mm)	FREE SPEED (rpm)	WEIGHT (kg)	AVERAGE AIR CONSUMPTION
APT908	6	19,000	0.34	1.68 cfm / 48 l/min

Also available: **APS901/CLT** - Replacement 6 mm Collet



Air Cartridge Gun

Compressed air sealing gun, with integrated control valve, for common sealants and glues from 310 ml original cartridges.

FEATURES

For 310 ml original cartridges	Integrated control valves
--------------------------------	---------------------------

PART NUMBER	MAXIMUM INLET PRESSURE	OPERATING PRESSURE	DIAMETER (mm)	LENGTH (mm)	WEIGHT (kg)
012 031 011	10 bar / 145 psi	0-10 bar / 0-145 psi	49	216	0.69



Telescopic Multifunction Gun

Compressed air sealing gun, with separate control valves for the air spray and material feed, for spray sealants from 310 ml original cartridges.

FEATURES

For 310 ml original cartridges	Separate control valves
--------------------------------	-------------------------

Supplied with cap nuts for joint sealing and standard applications - 10 internal and 10 external nozzles

PART NUMBER	MAXIMUM INLET PRESSURE	OPERATING PRESSURE	DIAMETER (mm)	LENGTH (mm)	WEIGHT (kg)
012 043 011	10 bar / 145 psi	0-7 bar / 0-100 psi	50	220	1.65

Also available: **020 202 431** - Internal and External Nozzles



Air Tool Specifications

PART NUMBER	DRIVE	MAXIMUM TORQUE		MECHANISM	FREE SPEED rpm	LENGTH mm	WEIGHT kg	AIR INLET	MIN. HOSE SIZE in	AVERAGE AIR CONSUMPTION AT 90 PSI SUPPLY		VIBRATION m/s ²	SOUND dBA
		ft-lb	Nm							cfm	l/min		
APC218/2B	1/2 in	400	539	18v Lithium Battery	1,800	210	2.8	-	-	-	-	12.83	91.7
APL001	1/2 in	260	352	Pin Clutch	7,000	150	2.1	Rp 1/4	1/4	4.2	119	3.5	101
APP101	3/8 in	200	271	Twin Hammer	10,000	152	1.28	Rp 1/4	3/8	2.7	75	3.09	95.1
APP201	1/2 in	320	433	Twin Hammer	10,000	152	1.29	Rp 1/4	3/8	2.7	75	3.09	95.1
APP203T	1/2 in	780	1,058	Twin Hammer	7,500	191	1.94	Rp 1/4	3/8	4.7	133	4.42	97.5
APP234	3/4 in	1,100	1,490	Twin Hammer	5,500	385	6	Rp 3/8	1/2	7.2	204	3.24	97.9
APP271	1 in	1,600	2,712	Twin Hammer	6,500	504	7	Rp 1/2	1/2	10	283	7.2	97.5
APP310	3/8 in	70	95	Ratchet	160	293	1.26	Rp 1/4	3/8	2.6	73.6	1.13	91.6
APP340	3/8 in	190	258	Ratchet	4,150	334	1.57	Rp 1/4	3/8	3.3	93	4.42	97.5
APP405	3/8 in	-	-	Keyless Chuck	1,800	203	1.16	Rp 1/4	3/8	4.29	121.4	0.9	92.5
APP409	1/4 in Hex	9	12	External Clutch	1,800	215	1.23	Rp 1/4	3/8	5	140	0.08	85.1
APP570SET	-	-	-	67 mm Stroke	-	217	1.73	Rp 1/4	3/8	2.73	77	4.84	96.3
APP600	-	-	-	25 mm Cutting Capacity	160	165	0.65	Rp 1/4	3/8	0.96	35.1	1.59	82.3
APP700SET	6 mm	-	-	0.43 HP	20,000	165	0.55	Rp 1/4	3/8	4	113	3.15	86.3
APP708	-	-	-	75 mm Disc Diameter	21,000	193	0.8	Rp 1/4	3/8	3	85	0.8	84
APP760	-	-	-	6 in Pad - 5 mm Orbit	12,000	203	0.71	Rp 1/4	3/8	2.5	71	2.86	85
APP770SET	-	-	-	3 in Pad - 3 mm Orbit	16,000	122	0.81	Rp 1/4	3/8	2.6	73.6	6.4	75
APP780SET	-	-	-	3 in Pad	2,100	132	0.81	Rp 1/4	3/8	2.6	73.6	2.5	80
APP790SET	-	-	-	3 in Pad	16,000	122	0.81	Rp 1/4	3/8	2.5	71	2.05	74
APT105	3/8 in	75	102	Single Hammer	10,000	127	1.3	Rp 1/4	3/8	3	85	3.4	80
APT200	1/2 in	500	678	Jumbo Hammer	10,000	108.5	1.3	Rp 1/4	3/8	4.5	128	4.42	97.5
APT205	1/2 in	398	540	Pin Clutch	7,500	190	2.4	Rp 1/4	3/8	3.6	102	1.39	96.6
APT208	1/2 in	438	594	Twin Hammer	8,000	185	2.6	Rp 1/4	3/8	3.9	110	2.44	101.8
APT230	3/4 in	995	1,350	Pin Clutch	4,000	250	4.5	Rp 3/8	1/2	10	282	4.96	108
APT233	1/2 in	590	800	Twin Hammer	8,000	203	1.95	Rp 1/4	3/8	4.8	136	4.21	85
APT263	1 in	1,800	2,445	Twin Hammer	5,000	540	11.5	Rp 1/2	1/2	22.9	650	8.4	102
APT265	1 in	1,800	2,445	Twin Hammer	4,000	301	8.93	Rp 1/2	1/2	11	317	17.7	103.7
APT266	1 in	2,500	3,390	Twin Hammer	4,300	615	13.07	Rp 1/2	3/4	9.5	269	11.16	113.8
APT320	3/8 in	45	60	Ratchet	150	266	1.2	Rp 1/4	3/8	3.6	101	5.2	90
APT330	1/2 in	45	60	Ratchet	150	266	1.2	Rp 1/4	3/8	3.6	101	5.2	90
APT401	-	-	-	Keyless Chuck	2,500	203	1.2	Rp 1/4	3/8	3.8	107	1.5	87
APT401R	-	-	-	Keyless Chuck	1,800	203	1.2	Rp 1/4	3/8	4	113	1.5	87
APT402	-	-	-	10 mm Chuck	1,700	215	1.39	Rp 1/4	3/8	4	113	1.5	87
APT407	-	12	17	1/4 in Hex	1,800	215	1.2	Rp 1/4	3/8	4	113	4.6	86
APT408	-	12	17	1/4 in Hex	1,700	250	1.1	Rp 1/4	3/8	4	113	4.6	86
APT517	-	-	-	3 mm Stroke	3,000	175	1.6	Rp 1/4	3/8	6.2	176	3.75	101.6
APT561	-	-	-	19 Needles - 3 mm	-	416	2.6	Rp 1/4	3/8	6.6	186	6.67	85.5
APT650	-	-	-	1.6 mm Cutting Capacity	9,000	279	0.7	Rp 1/4	3/8	1	28	2	87
APT660	-	-	-	1.2 mm Cutting Capacity	2,500	156	0.8	Rp 1/4	3/8	3.5	99	4.1	91.2
APT670	-	-	-	1.2 mm Cutting Capacity	2,000	210	2.2	Rp 1/4	3/8	4	113	4.1	86.7
APT690	-	-	-	1940 lbs Traction Power	-	175	1.6	Rp 1/4	3/8	4	113	1.3	76
APT702	6 mm Collet	-	-	-	22,000	175	0.55	Rp 1/4	3/8	3	85	5.4	93
APT715	-	-	-	100 mm Disc Diameter	12,000	254	2	Rp 1/4	3/8	6	170	2.34	86
APT716	-	-	-	180 mm Disc Diameter	7,600	360	3.5	Rp 3/8	1/2	5.3	149	3.3	93

Air Tool Specifications

PART NUMBER	DRIVE	MAXIMUM TORQUE		MECHANISM	FREE SPEED rpm	LENGTH mm	WEIGHT kg	AIR INLET	MIN. HOSE SIZE in	AVERAGE AIR CONSUMPTION AT 90 PSI SUPPLY		VIBRATION m/s ²	SOUND dBA
		ft-lb	Nm							cfm	l/min		
APT719	-	-	-	75 mm Disc Diameter	20,000	190	1	Rp 1/4	3/8	4.6	130	2.2	98
APT720	-	-	-	150 mm Pad - 8 mm Orbit	10,000	260	2.7	Rp 1/4	3/8	3.5	100	4.4	96
APT740	3/8 in	-	-	7/16 in Spindle	3,600	210	0.8	Rp 1/4	3/8	3.7	104.8	4.2	101
APT755	-	-	-	Belt 10 x 330 mm	16,000	260	0.9	Rp 1/4	3/8	2.5	70	2.3	98
APT756	-	-	-	Belt 20 x 480 mm	18,000	340	1.2	Rp 1/4	3/8	3.8	107.6	2.4	78
APT813	-	-	-	14 oz - 400 cc	-	170	1.5	Rp 1/4	3/8	4	113	3.5	79
APT901	6 mm Collet	-	-	-	25,000	125	0.34	Rp 1/4	3/16	1.68	47.6	4	81
APT902	2 in Pad	-	-	2 in Pad - 3 mm Orbit	16,500	125	0.34	Rp 1/4	3/16	1.83	51.8	3.8	81
APT903	1/4 in	25	34	-	300	128	0.49	Rp 1/4	3/16	1.8	50	3.78	80
APT904	10 mm	-	-	-	6,000	120	0.43	Rp 1/4	3/16	1.68	48	1.5	81
APT905	2 in Disc	-	-	-	16,500	110	0.45	Rp 1/4	3/16	1.68	48	4.2	81
APT906	3/8 in	25	34	-	300	128	0.49	Rp 1/4	3/16	1.8	50	4.31	80
APT907	3 in Disc	-	-	-	16,500	110	0.37	Rp 1/4	3/16	1.9	53.8	4.8	81
APT908	6 mm Collet	-	-	-	19,000	110	0.34	Rp 1/4	3/16	1.68	48	4	82
APT909	3 in Pad	-	-	3 in Pad - 3 mm Orbit	16,500	125	0.38	Rp 1/4	3/16	1.83	51.8	3.8	81

Air Tools

Air Tool
AccessoriesNitrogen Inflation
EquipmentTyre Inflation
Equipment

Tyre Care

Workshop
Accessories

Hose

Hose Fittings

Couplings &
Adaptors

Air Tool Accessories

PCL understand that the performance of your air tools is directly linked to the accessories you use on them. Just like a Formula 1 car relying on the quality of its tyres, the PCL air tool user deserves the best accessories for their tool investment.

That's why PCL has developed a range of premium quality accessories to complement the full range of PCL air tools. With PCL air tool accessories you can be confident that you will get the job done faster (aiding profitability), and be working with the safest combination of tool and accessory.



3 Piece 1/2" Drive Alloy Wheel Impact Socket Set



This 3 piece high quality set of alloy wheel impact sockets comes in the 3 most popular sizes of impact sockets for a 1/2" Drive Impact Wrench.

FEATURES

Impact rated 6 point chrome molybdenum sockets	Features two grease rings for superior user grip
3 socket sizes to cover most standard wheel nut sizes	Offers Z-Drive contacting the flat walls of fasteners for stronger grip

PART NUMBER

APA12

SOCKET SIZES (mm)

17, 19 & 21

1/2" Drive Alloy Wheel Single Impact Sockets



Designed to fit any 1/2" impact wrench. Manufactured from high grade hardened Chrome Molybdenum steel for longer life. Supplied with protective plastic sleeve to prevent damage to alloy wheels.

FEATURES

Thick walls prevent breakage	PCL branded with sizes printed clearly on body of socket
For use with 1/2" impact wrenches	

PART NUMBER

APA12/17

APA12/19

APA12/21

SIZE (mm)

17

19

21

18 Piece 1/2" Drive Impact Socket Set



From 10 mm to 32 mm, this high quality set of impact sockets covers everything you would require for 1/2" drive.

FEATURES

Extension Bar: 5 in	Features two grease rings for superior user grip
Impact rated 6 point chrome molybdenum sockets	Offers Z-Drive contacting the flat walls of fasteners for stronger grip

PART NUMBER

APA10

SOCKET SIZES (mm)

10, 11, 12, 13, 14, 15, 16, 17, 18, 19, 21, 22, 23, 24, 27, 30 & 32

1/2" Drive Deep Single Impact Sockets



Designed to fit any 1/2" impact wrench. Manufactured from high grade hardened Chrome Molybdenum steel for longer life.

FEATURES

Thick walls prevent breakage	PCL branded with sizes printed clearly on body of socket
For use with 1/2" impact wrenches	

PART NUMBER

APA11/12

APA11/13

APA11/15

APA11/17

APA11/19

APA11/21

APA11/22

APA11/24

APA11/27

SIZE (mm)

12

13

15

17

19

21

22

24

27

8 Piece 1/2" Deep Drive Impact Socket Set

From 12 mm to 24 mm, this high quality set of deep impact sockets covers a majority of applications for a 1/2" drive impact wrench.

FEATURES

Impact rated 6 point chrome molybdenum sockets Features two grease rings for superior user grip sockets

Deep sockets cover a wide variety of applications Offers Z-Drive contacting the flat walls of fasteners for stronger grip

PART NUMBER

APA11

SOCKET SIZES (mm)

12, 13, 14, 17, 19, 21, 22 & 24



3/4" Drive Deep Single Impact Sockets

Designed to fit any 3/4" impact wrench. Manufactured from high grade hardened chrome molybdenum steel for longer life.

FEATURES

Thick walls prevent breakage PCL branded with sizes printed clearly on body of socket

For use with 3/4" impact wrenches

PART NUMBER

APA30/27

27

APA30/30

30

APA30/32

32

APA30/33

33



4 Piece 1" Deep Drive Impact Socket Set

This 4 piece high quality set of deep impact sockets comes in a majority of sizes suitable for a 1" drive impact wrench.

FEATURES

Impact rated 6 point chrome molybdenum sockets Offers Z-Drive contacting the flat walls of fasteners for stronger grip

Features two grease rings for superior user grip

PART NUMBER

APA40

SOCKET SIZES (mm)

27, 30, 32 & 33



1" Drive Deep Single Impact Sockets

Designed to fit any 1" impact wrench. Manufactured from high grade hardened Chrome Molybdenum steel for longer life.

FEATURES

Thick walls prevent breakage PCL branded with sizes printed clearly on body of socket

For use with 1" impact wrenches

PART NUMBER

APA40/24

24

APA40/27

27

APA40/30

30

APA40/33

32

APA40/34

33

APA40/36

36

APA40/38

38



Extension Bars



Manufactured from high grade hardened chrome molybdenum steel for longer life.

FEATURES

For use with 1/2" and 3/4" impact wrenches

PART NUMBER	SQUARE DRIVE (in)	LENGTH
APA50	3/4	5 in / 125 mm
APA51	1/2	5 in / 125 mm

5 Piece Saw Blade Set



Saw blades for Air Body Saws.

FEATURES

Suitable for use with PCL and other brand body saws

Universal fitment

Excellent performance

Fast clean cutting action

PART NUMBER

SIZE (mm)

APT32

95 x 13 x 32 Teeth

5 Piece Chisel Set



Chisel set suitable for Air Hammers.

FEATURES

Suitable for use with PCL and other branded air hammers

Chrome molybdenum forged for longer life

Supplied in a tool roll

PART NUMBER

SHANK SIZE

DIAMETER (mm)

LENGTH (mm)

APT20

.401 in Parker Taper

10

175

6" Sanding Pads



6" Backing pads for Air Sanders.

FEATURES

For use with self adhesive or velcro sanding papers

Excellent durability and balance

PART NUMBER

BORE (mm)

DIAMETER

THREAD SIZE (in)

APT90A

Velcro backing pad

6 in / 150 mm

5/16

APT90V

Self-adhesive backing pad

6 in / 150 mm

5/16

2" / 50mm Grinding Wheels

Grinding Wheels for grinders.

FEATURES

Conforms to EN12413	Suitable for use with PCL and other brand grinders
Excellent performance and life	2 in / 50 mm diameter
5 wheels per pack	

PART NUMBER	BORE (mm)	DIAMETER
APA102	10	2 in / 50 mm



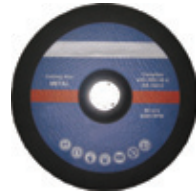
3" Cutting Disc Set

Cutting discs for Air Cutting Tools.

FEATURES

Conforms to EN12413	10 discs per pack
Suitable for use with PCL and other brand cut off tools	Excellent performance and cutting life

PART NUMBER	BORE (mm)	DIAMETER
APT75FCM	10	3 in / 75 mm



2" Sandpaper Discs

Available in 5 grades, these Sandpaper Discs are designed to fit 2" Velcro backing pads. Supplied in packs of 10 as standard.

FEATURES

Felt sides for easy fit to the pad	5 different grades to cover all sanding applications
High grade sandpaper pads for a professional finish	The higher the grade number the finer the sandpaper

PART NUMBER	GRADE	MATERIAL	QUANTITY PER PACK
APA96	60	Felt/sandpaper	10
APA97	120	Felt/sandpaper	10
APA98	240	Felt/sandpaper	10
APA99	320	Felt/sandpaper	10
APA100	400	Felt/sandpaper	10

Also available: APA95 - Accessory pack containing 10 of each grade disc and a 2" backing pad



3" Sanding Accessory Pack

Supplied in 3 grades, these sandpaper discs are designed to fit Velcro 3" backing pads. Supplied in a pack of 30 (10 of each grade).

FEATURES

Felt sides for easy fit to the pad	3 different grades to cover all sanding applications
High grade sandpaper pads for a professional finish	

PART NUMBER	GRADES	MATERIAL	QUANTITY PER PACK
APA103	60, 120 & 140	Felt/sandpaper	10 of each grade



3" Replenish Kit for Pistol Surface Prep Set



This 3" Replenish Kit is designed for the APP790SET.

FEATURES

Three different grades of sand paper

Three differing categories of conditioning pads

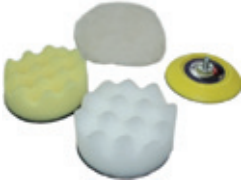
PART NUMBER

APA104

CONTENTS

x1: 3 in female screw lock backing pad
 x10: 3 in 60 grit male screw lock sandpaper
 x10: 3 in 80 grit male screw lock sandpaper
 x10: 3 in 120 grit male screw lock sandpaper
 x1: 3 in fine screw lock conditioning pad
 x1: 3 in medium screw lock conditioning pad
 x1: 3 in coarse screw lock conditioning pad

3" Buffing Accessory Pack



Buffing accessory pack contains two different grades of sponge pad, a lambswool pad and a spare 3 in backing pad. Ideal for use with the APT902 when installed with a speed regulator.

FEATURES

Velcro backing pad allows simple removal and attachment of buffing pads

Felt backed buffing pads for easy transfer to backing pad

High grade sponge and lambswool pads for efficient buffing

PART NUMBER

APA92

SIZE

3 in / 75 mm

MATERIAL

Sponge/lambswool

2" Velcro Backing Pad for Mini Sander



This spare 2" Velcro backing pad is designed for use with the APT902 sander. Ideal for quick transfer of sanding discs.

FEATURES

Hardened composite body material

Standard threaded end to fit the Mini Sander

High grade Velcro

PART NUMBER

APA93

MATERIAL

Composite/Velcro

DIAMETER

2 in / 50 mm

THREAD SIZE

M6

3" Velcro Backing Pad for Mini Sander



This spare 3" Velcro backing pad is designed for use with the APT902 sander. Ideal for quick transfer of sanding discs.

FEATURES

Hardened composite body material

Standard threaded end to fit the Mini Sander

High grade Velcro

PART NUMBER

APA94

MATERIAL

Composite/Velcro

DIAMETER

3 in / 75 mm

THREAD SIZE

M6

Mini Speed Regulator

Designed to reduce the free speed of air tools with a 1/4 in thread. Ideal product for enabling the user to turn a powerful sander into a precision buffing tool.

FEATURES

Heavy duty steel material
Speed wheel on regulator head for easy increase or decrease of speed



PART NUMBER	THREAD SIZE (in)	MATERIAL
APA91	1/4	Steel

Air Tool Whip Hoses

The vibrations caused in the use of air tools make a coupling connection subject to Health & Safety Regulations.

See ISO 4414:1998 and EN 983:1996 for safety requirements covering the installation and use of pneumatic equipment.

A Health and Safety Guide has been produced which covers the use of pneumatic equipment.

The Health & Safety Executive Guide HS(G) 39 states "requirements for quick acting couplings apply to most percussive and vibrating air tools, which may be fixed or hand held. If a quick acting coupling socket is fitted at the hose end adjacent to the tool, the plug should not be screwed directly into the inlet port but should be fitted onto a short isolation hose (0.5 m to 1.5 m long), thus isolating the plug and socket from the tool vibration."

The International Standard (ISO 6150:1998) recommends a minimum of 300 mm of flexible hose to be used between a vibrating tool and a quick acting coupling.

FEATURES

Working pressure @ 20°C: 300 lbf/in² (21 bar) Burst pressure: 63 bar
Temperature range: -10°C to 60°C



PART NUMBER	LENGTH	INSIDE DIAMETER	FITTINGS
HA2108	0.6 m / 2 ft	7 mm / 1/4 in	Standard Adaptor & R 1/4 Male
HA2124N	0.6 m / 2 ft	7 mm / 1/4 in	Standard Adaptor & NPT 1/4 Male
HA2149	0.6 m / 2 ft	10 mm / 3/8 in	Standard Adaptor & R 1/4 Male
HA2109	0.6 m / 2 ft	10 mm / 3/8 in	Standard Adaptor & R 3/8 Male
HA2155	0.4 m / 16 in	8 mm / 5/16 in	Standard Adaptor & R 3/8 Male
HA2116	0.6 m / 2 ft	13 mm / 1/2 in	100 Series Adaptor & R 1/2 Male
HA2132	0.6 m / 2 ft	10 mm / 3/8 in	XF Adaptor & R 1/4 Male

Please note - an increase in temperature above 20°C will affect the working pressure quoted above

Replacement Nozzle Set

Designed for use with the Telescopic Multifunction Gun.

PART NUMBER	CONTENTS
020 202 431	x50: Internal Nozzle x50: External Nozzle



Trix Range Safety Glasses



The Trix Safety Glasses offer style and comfort at a lower price. These glasses offer a ballistic rating and 99% UV protection. Great all round safety glasses.

FEATURES

Mono-lens construction, with wraparound frame	Complies with ANSI Z87.1-2010 (Z87+) and CE-EN-166
All lenses provide 99% UV protection	Ballistic Vo impact rated, 4x the ANSI requirement
Anti-Fog	

PART NUMBER	MATERIAL	QUANTITY PER PACK
TRS001	Polycarbonate	12

Safety Goggles



This impact and splash resistant goggle offers the user high performance protection in demanding environments.

FEATURES

Base six Polycarbonate lens with SuperCoat™ anti-fog coating	Four indirect ventilation slots further improves fog resistance
Impact resistant, moulded and 2.2 mm thick lens	Complies with ANSI Z87.1 and CE EN-166 requirements
Clear Anti-fog	

PART NUMBER	MATERIAL	QUANTITY PER PACK
GRS001	Polycarbonate	6

Ear Muffs



This pair of standard Ear Muffs allows the user to protect the whole ear from both sound and impact.

FEATURES

Extra padding offers a high level of comfort and attenuation	Rated to 25dB NRR protection
Designed for the those looking for all-round ear protection	Sufficient for 90% of all noise environments

PART NUMBER	MATERIAL
EMS001	Plastic/synthetic leather

Multi-task Gloves

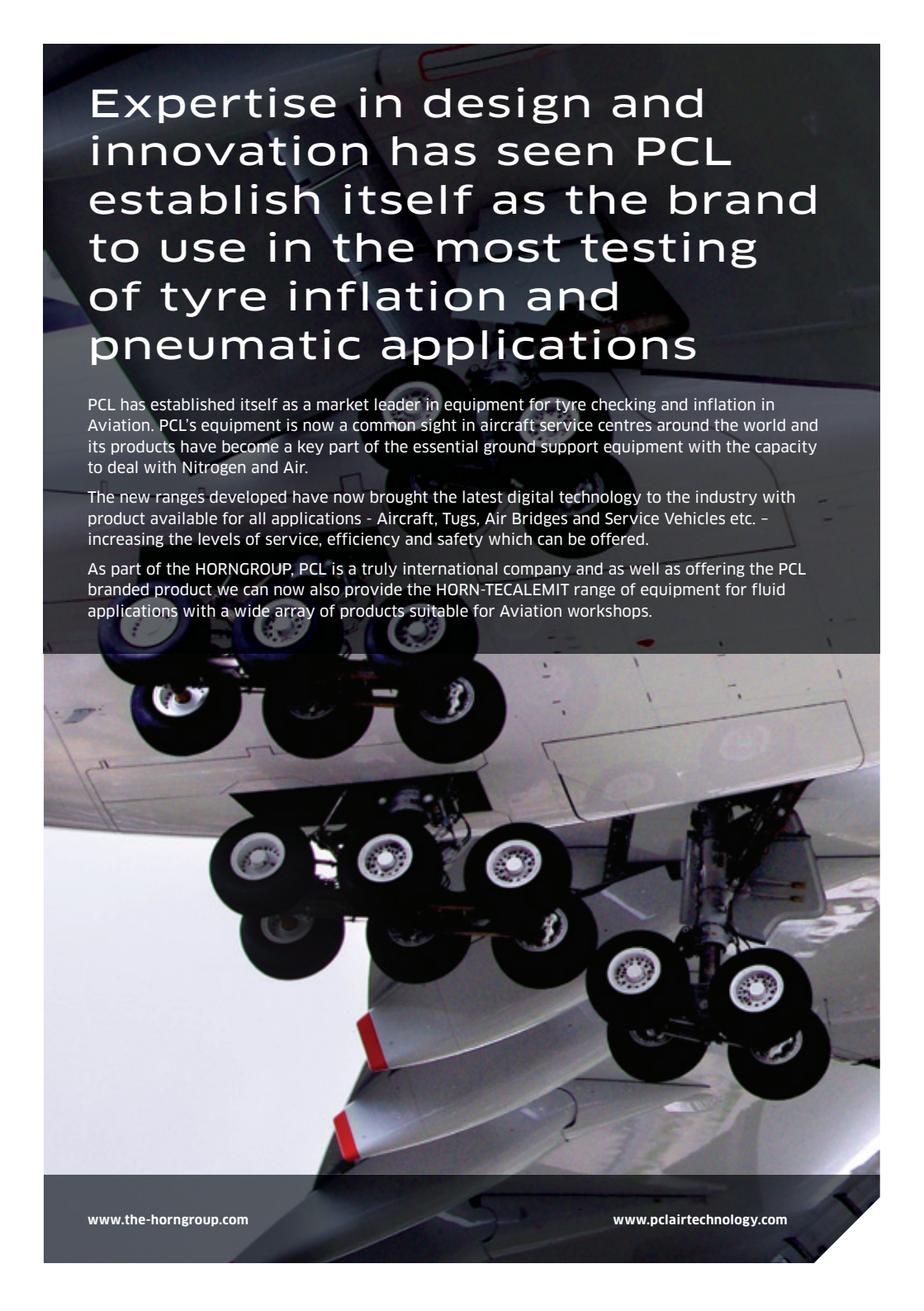


A blend of synthetic leathers with PVC reinforced fingertips and inner palm - a great all-round protective glove.

FEATURES

Flexible: close fitting design ensures maximum user dexterity	Stretch: materials flex in conjunction with the hands natural movement
Comfortable: combination of materials offers excellent in-use comfort	Protection: reinforced areas on palm and fingertips ensure added protection

PART NUMBER	STYLE	MATERIAL	SIZE
MTG510	5 full fingers	Synthetic leather	10
MTG511	5 full fingers	Synthetic leather	11
MTG311	3 open fingers	Synthetic leather	11
MTG310	3 open fingers	Synthetic leather	10

An aerial, top-down view of an aircraft's landing gear system. The aircraft is white with a red stripe on the fuselage. The landing gear consists of multiple sets of wheels, including a main gear with four wheels and a tail gear with two wheels. The background is a clear blue sky.

Expertise in design and innovation has seen PCL establish itself as the brand to use in the most testing of tyre inflation and pneumatic applications

PCL has established itself as a market leader in equipment for tyre checking and inflation in Aviation. PCL's equipment is now a common sight in aircraft service centres around the world and its products have become a key part of the essential ground support equipment with the capacity to deal with Nitrogen and Air.

The new ranges developed have now brought the latest digital technology to the industry with product available for all applications - Aircraft, Tugs, Air Bridges and Service Vehicles etc. - increasing the levels of service, efficiency and safety which can be offered.

As part of the HORNGROUP, PCL is a truly international company and as well as offering the PCL branded product we can now also provide the HORN-TECALEMIT range of equipment for fluid applications with a wide array of products suitable for Aviation workshops.

Nitrogen Inflation Equipment

The PCL range of Nitrogen products combines the latest in high performance digital inflation technology with the cost effective delivery of Nitrogen.

This new range of equipment is designed to cover every application of Nitrogen inflation, from fast-fit tyre centres to specialist OTR & service operations in very demanding environments.





Air Tools

Air Tool
Accessories

Nitrogen Inflation
Equipment



Bespoke Nitrogen solutions now available from PCL

OTR/Mining Tyre Inflation Systems

PCL have extensive experience designing and producing fixed workshop and portable outdoor Nitrogen inflation stations for large OTR tyre applications

From small workshop systems to bespoke turnkey packages container mounted for tyre sizes up to 51"

Site visits and bespoke product design service available to meet inflation speed and purity criteria

Fully tested and commissioned in the UK

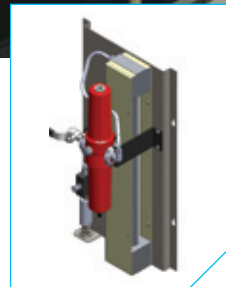


Mobile Tyre Fitting Service Kits

PCL have designed and produced a range of OEM Nitrogen inflation kits which can be vehicle mounted to allow for mobile Nitrogen inflation

Kits available in parts to install in new vehicles or pre-mounted on a plate for retro-fitting to vehicles

Kits available for a majority of tyre applications, ranging in weight from 6-11 kg



Contact us for more information on **+44 (0)114 248 2712** or info@pclairtechnology.com

Nitrogen Inflation Equipment

Why Nitrogen?

Nitrogen as a dry, stable gas with a slow migration rate through rubber compared to normal air it can offer enhanced handling, improved fuel efficiency, extended tyre life, and most importantly increased safety, which is why it is used in Formula One.

The PCL range of NEXUS Nitrogen products combines the latest in high performance digital inflation technology with the cost effective delivery of Nitrogen. With units specifically designed for every type of inflation application from passenger car tyres to HGV's and OTR tyres; the NEXUS range covers it all.



KEY PRODUCT BENEFITS

-
- Revenue generation for Tyre Service Providers
-
- Cost effective to use - machine pays for itself in as little as 3 months
-
- Simple to set up with virtually zero maintenance
-
- Low life time costs - with high grade filtration and high performance components
-
- Guaranteed accuracy and robustness with ceramic pressure sensor - calibration certificate supplied
-
- Assembled, tested and calibrated in Sheffield, UK
-

KEY PRODUCT FEATURES

-
- Improved gas separation filters for faster inflation times
-
- New improved valves and fittings
-
- Mobile with 90mm castors for better flexibility in positioning
-
- N2 purity check point
-
- Internal pressure vessels meet CE standards
-
- Tank pressure contents gauge
-
- Electronic preset tyre inflation options for 4 tyres simultaneously
-
- Digital display screen
-
- Options for up to 6 tyres at once with different front and rear tyre pressures
-
- Software programme on inflator options automatically converts of up to 4 tyres from air to nitrogen
-
- Accuracy up to $\pm 0.5\%$ of full scale reading
-



Nitrogen Generator & built-in tyre inflator

For automatically converting tyres from air to 95%+ Nitrogen



Nitrogen Generator Only

For use with existing delivery/inflation equipment



Nitrogen Generator & built-in multi tyre inflator

For automatically converting different front and rear tyre pressures to 95%+ Nitrogen



Nitrogen Purity Analyser

For detecting the actual percentage of Nitrogen in a vessel/tyre

PART NUMBER	APPLICATION	PART NUMBER	APPLICATION	PART NUMBER	APPLICATION	PART NUMBER	APPLICATION
NEX2I		NEX2G		NEX2I/MQ		N2A001	Nitrogen Analyser
NEX6I		NEX6G		NEX6I/MQ		N2AS001	Replacement sensor
NEXMI		NEXMG		NEXMI/MQ			

Tyre Inflation Equipment

PCL offers the highest quality, most reliable and cost effective equipment for fast and accurate tyre inflation. From handheld analogue units, to the high-tech ACCURA electronic range – PCL's innovative, market-leading inflators provide the best and most select range of functionality for all types of tyre inflation applications throughout the world*.

*National approvals required in some countries, details available on request.



Air Tools

Air Tool
Accessories

Nitrogen Inflation
Equipment

Tyre Inflation
Equipment



Self-contained Digital Inflation Towers

The latest air tower range, built in the UK, is designed to meet the exacting and testing demands of the modern petrol forecourt while also providing an attractive and stylish appearance.



FEATURES

Electronic pre-set pressure setting

Full menu-driven list of options to suit every requirement

Default to safe setting

New high performance slow retract hose reels on standard cabinets

Large towers

Coin mechanism options available

Built-in lockable coin vault available on standard cabinets

Bespoke designs, graphics and functionality available

Screenwash options available

SPECIFICATION

Accuracy: 0.01 bar / 0.1 psi / 2 kPa / 0.01 kgf/cm² (exceeds EC Directive 86/217)

Maximum Inflation Pressure: 10 bar / 145 psi / 999 kPa / 10 kgf/cm²

Resolution: 0.1 bar / 1 psi / 5 kPa / 0.1 kgf/cm²

Operating Temperature: -20 C +70 C

IP Rating: IP44

Display: 30 mm backlit transfective LCD

5.5 or 10 bar compressor options (7 bar as standard)

PART NUMBER

D90

DESCRIPTION

Slimline
Coiled 7.5 m black PU air hose and twin hold-on connector
Coin mechanism option

D95

Standard Cabinet
Internal wire braided hose
Slow retracting air reel c/w 7.62 m hose and twin hold-on connector
Coin mechanism option (lockable)

ACCURA D10 Tyre Inflator

Suitable for petrol filling stations. This exciting and innovative range incorporates an electronic modular design to allow PCL to offer a "menu driven" range of highly accurate forecourt tyre inflators.

FEATURES

Auto-start inflation	Audible and visual end of cycle signal
Default to safe setting	Bespoke variants available inc. dual screen
Aluminium die-cast housing	Complies with EC Directive 86/217/EEC & BS EN 12645:1999

SPECIFICATION

Accuracy: 0.01 bar / 0.1 psi / 2 kPa / 0.01 kgf/cm ² (exceeds EC Directive 86/217)	Maximum Inflation Pressure: 10 bar / 145 psi / 999 kPa / 10 kgf/cm ²
Resolution: 0.1 bar / 1 psi / 5 kPa / 0.1 kgf/cm ²	

PART NUMBER

DESCRIPTION

D10	Wall mounted
D20	Pedestal mounted
D25	Pedestal mounted air & water



ACCURA A10 Tyre Inflator

The Analogue Unit represents all the benefits of digital technology but with the attributes of a traditional analogue display.

FEATURES

Auto-start inflation	Robust electronics provide high accuracy
Default to safe setting	Complies with EC Directive 86/217/EEC & BS EN 12645:1999
Aluminium die-cast housing	

SPECIFICATION

Accuracy: 0.01 bar / 0.1 psi / 2 kPa / 0.01 kgf/cm ² (exceeds EC Directive 86/217)	Maximum Inflation Pressure: 10 bar / 145 psi / 999 kPa / 10 kgf/cm ²
Resolution: 0.1 bar / 1 psi / 5 kPa / 0.1 kgf/cm ²	

PART NUMBER

DESCRIPTION

A10	Wall mounted
A20	Pedestal mounted



Mechanical Units

Mechanical Units were the original inflators designed and manufactured by PCL.

FEATURES

Clear impact-resistant toughened glass dial cover	Wall mounted (WM) or Pedestal mounted (PM)
Durable aluminium outer casing	Complies with EC Directive 86/217/EEC & BS EN 12645: 1999

SPECIFICATION

Accuracy: 0.01 bar / 0.1 psi / 2 kPa / 0.01 kgf/cm ² (exceeds EC Directive 86/217)	Maximum Inflation Pressure: 10 bar / 145 psi / 999 kPa / 10 kgf/cm ²
Resolution: 0.1 bar / 1 psi / 5 kPa / 0.1 kgf/cm ²	

PART NUMBER

HOSE TYPE

TYRE VALVE CONNECTION

WM1H02	7.6 m Co-axial	Single Clip-on
WM1H01	7.6 m Co-axial	Twin Hold-on
WM2H02	7.6 m Twin Twisted	Single Clip-on
WM2H01	7.6 m Twin Twisted	Twin Hold-on
WM3H02	7.6 m Air Hose	Single Clip-on
WM3H05	8.5 m Black Polyurethane	Euro style
PM1H02	7.6 m Co-axial	Single Clip-on
PM1H01	7.6 m Co-axial	Twin Hold-on

Available in a wide range of calibrations



6 Litre 'AutoPortair'



PCL's AutoPortair unit takes the air to where it is needed. The ideal meter for service bays, garage forecourts, car showrooms, emergency breakdown vehicles and workshops. Provides guaranteed accuracy in a simple to use lightweight housing material.

FEATURES

Attractive and compact 'take anywhere' unit	Pressure vessel complies with 2009/105/EC
Robust polyethylene casing	Complies with EC Directive 86/217/EEC
Re-charges automatically when returned to charge point	

PART NUMBER

P10H02

CALIBRATION

0-140 lbf/in² / 0-10 bar

Pavement Gauge



This classic PCL design has proved a popular model for over 40 years. Robust and easy to use, the "PG" is a familiar site on garage forecourts and in workshops throughout the world.

FEATURES

Tough - made from heavy duty alloy	Easy to read toughened glass dial
Lightweight (4.3 kg) - easy to carry	Complies with EC Directive 86/217/EEC & BS EN 12645: 1999

PART NUMBER

PG1H01

CALIBRATION

0-140 lbf/in² / 0-10 bar

QUBE Tyre Inflator



Cost-effective and accurate tyre inflation is boxed off with this space-saving, entry-level, electronic preset tyre inflator.

FEATURES

Touch screen technology
Complies with EC Directive 86/217/EEC
'Plug & Play' tyre inflation

SPECIFICATION

Maximum inflation pressure: 10 bar / 145psi / 1000kpa / 10.2kg/cm²

Resolution: 0.1 bar / 1psi / 5kpa / 0.1kg/cm²

PART NUMBER	VOLTAGE	HOSE LENGTH	TYRE VALVE CONNECTION
QUBE1	230 v (UK Plug)	5 m (16 ft)	Euro Clip-on
QUBE3	230 v (Australian Plug)	5 m (16 ft)	Euro Clip-on
QUBE4	120 v (US Plug)	5 m (16 ft)	Euro Clip-on
QUBE6	12 v	-	-
QUBE9	230 v (EU Plug)	5 m (16 ft)	Euro Clip-on

Combining advanced and user friendly design, touch screen technology, leading sensor technology, upgraded modern electronics and proprietary software – the Tyreshop Model enables operators to provide leading tyre inflation services cost effectively. These models are suitable for all professional tyre applications including commercial and retail tyreshops, mobile tyre fleets, automotive OEM's, garages and car dealers, as well as transport depots.



FEATURES

Bead seat over pressure facility (OPS)	Fast inflation times
Nitrogen (N ₂) purge	Complies with EC Directive 86/217/EEC & BS EN 12645: 1999
Auto-start inflation	

SPECIFICATION

Accuracy: 0.01 bar / 0.1 psi / 2 kPa / 0.01 kgf/cm ² (exceeds EC Directive 86/217)	Maximum Inflation Pressure: 10 bar / 145 psi / 999 kPa / 10 kgf/cm ²
Resolution: 0.1 bar / 1 psi / 5 kPa / 0.1 kgf/cm ²	

PART NUMBER	DESCRIPTION
D12	Wall mounted

ACCURA D13 Tyreshop Multi-tyre Inflator

In addition to the standard features of the Tyreshop Model, this unit provides multi-tyre capabilities further reducing tyre inflation times by allowing the user to inflate up to 4 tyres at once.

FEATURES

Bead seat over pressure facility (OPS)	Fast inflation times
Nitrogen (N ₂) purge	Complies with EC Directive 86/217/EEC & BS EN 12645: 1999
Auto-start inflation	

SPECIFICATION

Accuracy: 0.01 bar / 0.1 psi / 2 kPa / 0.01 kgf/cm ² (exceeds EC Directive 86/217)	Maximum Inflation Pressure: 10 bar / 145 psi / 999 kPa / 10 kgf/cm ²
Resolution: 0.1 bar / 1 psi / 5 kPa / 0.1 kgf/cm ²	

PART NUMBER	DESCRIPTION
D13	Wall mounted multi-hose variant



MK3 Tyre Inflator

The highly regarded, classic MK3 Tyre Inflator has become industry standard in UK garages, petrol forecourts, tyre shops and depots, and is popular amongst operators and tyre fitters for its reliability and accuracy, and sturdy yet slim line design.

The MK3 Tyre Inflator, is robust and highly accurate, offering leading inflation and deflation rates and high performance both indoor and outdoor. Meanwhile the redesigned valve arrangement and larger hose allows air flows up to 30% faster, representing substantial labour-savings for operators.



FEATURES

Magnified linear scale	Calibrated to 0-138 lbf/in ² and 0-9.6 bar
Cast aluminium body with impact absorbing rubber bumper	Complies with EC Directive 86/217/EEC & BS EN 12645: 1999
Slimline design	

PART NUMBER	HOSE LENGTH	TYRE VALVE CONNECTION	CALIBRATION
ALG3H03	0.53 m (21 in)	Twin Hold-on	0-138 lbf/in ² / 0-9.6 bar
ALG3H04	0.53 m (21 in)	Single Clip-on	0-138 lbf/in ² / 0-9.6 bar
ALG3H031	0.36 m (14 in)	Short Stem Twin Hold-on	0-138 lbf/in ² / 0-9.6 bar
ALG3H05	1.8 m (6 ft)	Twin Clip-on	0-138 lbf/in ² / 0-9.6 bar
ALG3H06	2.7 m (9 ft)	Twin Clip-on	0-138 lbf/in ² / 0-9.6 bar
ALG3H061	2.7 m (9 ft)	Single Clip-on	0-138 lbf/in ² / 0-9.6 bar

Available in a wide range of calibrations

Truck Tyre Inflator



Building on the world-leading MK3, the ALG4 is a high pressure tyre inflator designed especially for truck tyre inflation. The ALG4 can inflate up to 174 lbf/in² (12 bar) and is reliable and versatile with its aluminium die cast body and linear gauge.

FEATURES

Magnified linear scale	Complies with EC Directive 86/217/EEC & BS EN 12645: 1999
Cast aluminium body with impact absorbing bumper	

PART NUMBER	HOSE LENGTH	TYRE VALVE CONNECTION	CALIBRATION
ALG4H36	3.6 m (12 ft)	Twin Clip-on	0-174 lbf/in ² / 0-12 bar

High Pressure MK3 Tyre Inflator

Classic hand-held, slimline design for use in high-pressure applications. Can inflate up to an impressive 300 lbf/in² (21 bar).

FEATURES

Magnified linear scale	Ergonomically designed trigger
Cast aluminium body with impact absorbing rubber bumper	Designed for high pressure applications and the aircraft industry

PART NUMBER	HOSE LENGTH	TYRE VALVE CONNECTION	CALIBRATION
ALG5H04	1.8 m (6 ft)	Single Clip-on	45-300 lbf/in ² / 3-21 bar
ALG5H041	1.8 m (6ft)	Twin Clip-on	45-300 lbf/in ² / 3-21 bar



'Economy' Alloy Tyre Inflator

PCL's Alloy Tyre Inflator is a general purpose tyre inflator with an all Alloy body with a rubber protected gauge. Simple and easy to use, they are ideal for general low volume tyre inflation. The ADTG4 Tyre Inflator has a durable alloy body and Euro style valve connector.

PART NUMBER	HOSE LENGTH (m)	TYRE VALVE CONNECTION	CALIBRATION
ADTG4	0.85	Euro Clip-on	10-210 lbf/in ² / 0.7-15 bar



'Economy' Blowgun Style Tyre Inflator

PCL's Blowgun Style Tyre Inflator is a general purpose tyre inflator with an all Alloy body with a rubber protected gauge. Simple and easy to use, they are ideal for general low volume tyre inflation. The LTG01 Tyre Inflator has a durable alloy body and Euro style valve connector.

PART NUMBER	HOSE LENGTH (m)	TYRE VALVE CONNECTION	CALIBRATION
LTG01	0.4	Euro Clip-on	0-174 lbf/in ² / 0-12 bar



Airforce Tyre Inflator

PCL's range of handheld inflation has been increased with the development of the AirForce. This robust, lightweight, handheld mechanical tyre inflator offers fast, trouble-free tyre inflation for tyreshops, garages, car dealers and transport depots.

FEATURES

Clear dial display	Modern, lightweight and shock resistant construction
Direct valve design increases inflation and deflation rates	Calibrated to 0-170 lbf/in ² and 0-12 bar
Individually tested and certified	Complies with EC Directive 86/217/EEC & BS EN 12645: 1999

PART NUMBER	HOSE LENGTH	TYRE VALVE CONNECTION	CALIBRATION
AFG1H03	0.53 m (21 in)	Twin Hold-on	0-170 lbf/in ² / 0-12 bar
AFG1H06	2.7 m (9 ft)	Twin Clip-on	0-170 lbf/in ² / 0-12 bar
AFG1H08	1.8 m (6 ft)	Euro Clip-on	0-170 lbf/in ² / 0-12 bar

Available in a wide range of calibrations



DTI Tyre Inflator



This highly accurate inflator is suitable for all kinds of tyre applications; its ability to inflate up to 170 psi, an ideal addition to the tyreshop tool box.

FEATURES

Long battery life with battery level indicator	Auto power off
psi, bar kpa units of pressure selectable by button; last selection saved	Hand trigger inflate and thumb controlled deflate

PART NUMBER	HOSE LENGTH (m)	TYRE VALVE CONNECTION	CALIBRATION
DTI08	1.8	Euro Connector	5-170 psi / 0.34-12 bar / 34-1200 kPa
DTI081	0.5	Euro Connector	5-170 psi / 0.34-12 bar / 34-1200 kPa

ACCURA 1 Tyre Inflator

The ACCURA 1 is a robust yet sophisticated handheld electronic tyre inflator designed to break the mould of existing handheld tyre inflation. With leading electronics and sensor technology as well as patented software it offers fast, accurate and trouble-free tyre inflation and deflation.



FEATURES

Robust electronic design	Modern, lightweight and shock resistant construction
Ceramic sensor	Complies with EC Directive 86/217/EEC & BS EN 12645: 1999
Clear and easy to read digital display	

PART NUMBER	HOSE LENGTH	TYRE VALVE CONNECTION	CALIBRATION
DAC1A03	0.53 m (21 in)	Twin Hold-on	0-174 lbf/in ²
DAC1A06	2.7 m (9 ft)	Twin Clip-on	0-174 lbf/in ²
DAC1A08	1.8 m (6 ft)	Euro Clip-on	0-174 lbf/in ²
DAC1C03	0.53 m (21 in)	Twin Hold-on	0-12 bar
DAC1C06	2.7 m (9 ft)	Twin Clip-on	0-12 bar
DAC1C08	1.8 m (6 ft)	Euro Clip-on	0-12 bar

Digital High Pressure Tyre Inflator



This Digital Tyre Inflator includes features such as metal inlet and outlet valves, metal internal fittings and strong engineering plastics to cope with both the high pressure and the high usage environments.

FEATURES

Built in metal components and engineered plastics to with stand high pressure
 Brass inlet and outlet valves
 Individual testing supplied with Test Certificate
 Low battery warning indicator

SPECIFICATION

Maximum inflation pressure:
 319 psi or 22 bar
 Resolution: 1 psi or 0.1 bar

PART NUMBER	HOSE LENGTH (m)	TYRE VALVE CONNECTION	CALIBRATION
DAC5A04	1.8 m	Single clip-on	3-319 psi
DAC5C04	1.8 m	Single clip-on	0.2-22 bar

PCL's vast experience in designing and manufacturing tyre inflation equipment extends to provide this range of portable calibration testing equipment.

FEATURES

4 Litre receiver manufactured in accordance with 2009/105/EC

Supplied with Calibration certificate

Resettable zero point

Battery powered including battery charger

Lightweight and easy portable, checks most type of Handheld and PCL digital tyre inflation equipment.

SPECIFICATION

0-12.20 bar / 0-1220 kpa / 0- 176 psi

LCD 21mm high / backlit

Accuracy class: ¼ of EN12645:2014 Pressure tolerance

PART NUMBER

TE3

RESOLUTION

0.01 bar / 1 kpa / 0.1 psi



Air Tools

Air Tool Accessories

Nitrogen Inflation Equipment

Aircraft Tyre Inflator

The classic hand-held, slimline design for use on aircraft tyres. Can inflate up to an impressive 300 lbf/in² (21 bar).

FEATURES

Magnified linear scale

Cast aluminium body with impact absorbing rubber bumper

Ergonomically designed trigger

Designed for high pressure applications and the aircraft industry

PART NUMBER

ALG5A01

HOSE LENGTH

2 m Skydrol Hose (x2)

TYRE VALVE CONNECTION

8v1 Screw-on and 12v1 Screw-on

CALIBRATION

45-300 lbf/in² / 3-21 bar



Tyre Inflation Equipment

Tyre Care

Aircraft Digital Tyre Inflator

The Digital Tyre Inflator is the latest in its line for high pressure Aviation applications. This takes PCL's market-leading digital tyre inflator, building on its worldwide reputation for fast, accurate and trouble-free inflation suitable for Aviation applications.

FEATURES

Built in metal components and engineered plastics to with stand high pressure

Brass inlet and outlet valves

Individual testing supplied with Test Certificate

Low battery warning indicator

8v and 12v connectors available with Skydrol hose

SPECIFICATION

Maximum inflation pressure: 319 psi

Resolution: 1 psi

PART NUMBER

DAC5A01

HOSE LENGTH (m)

2 m Skydrol hose (x2)

TYRE VALVE CONNECTION

8v1 Screw-on and 12v1 Screw-on

CALIBRATION

3-319 psi



Workshop Accessories

Hose

Hose Fittings

Couplings & Adaptors

There are two types of connector. It is therefore important when purchasing connectors to specify whether a closed or open end type is required.

A **Closed End connector** is used when air is supplied directly from a main air line (i.e. compressor or air receiver). A non-return valve unseats on connection to the tyre's valve, allowing air to flow into the tyre. The handles on these connectors are red in colour.

An **Open End connector** is used with MK3 Tyre Inflator, PCL wall gauges and PCL portable gauges. This connector has a pin which unseats the tyre's valve when in use. The handles on these connectors are black in colour.

Twin Hold-on Connectors



FEATURES

Suitable for inflation of twin tyres
Choice of stem length
Colour coded handles - black for open end and red for closed end

PART NUMBER	VALVE STYLE	INLET SIZE
C01A03	Open end	Rp 1/4
C01B03	Closed end	Rp 1/4
C05A03/Short stem	Open end	Rp 1/4
C05B03/Short stem	Closed end	Rp 1/4
C015A01/Angled stem	Open end	6.35 mm (1/4 in)

Twin Clip-on Connectors



FEATURES

Suitable for inflation of twin tyres
Colour coded handles - black for open end and red for closed end
Clips onto tyre valve to allow operator to work away from tyre
Choice of stem length and style
Suitable for use in tyreshops

PART NUMBER	VALVE STYLE	INLET SIZE
C03A03	Open end	Rp 1/4
C03B03	Closed end	Rp 1/4

Single Clip-on Connectors



FEATURES

Clips onto tyre valve to allow operator to work away from tyre
Open and closed end options available
Suitable for use in tyreshops

PART NUMBER	VALVE STYLE	INLET SIZE
C02E03	Open end	4.75 mm (3/16 in)
C02H03	Open end	6.35 mm (1/4 in)
C02F03	Closed end	4.75 mm (3/16 in)
C02J03	Closed end	6.35 mm (1/4 in)

Thumb-lock Connector



For use with PCL footpumps.

PART NUMBER	CONTENTS
FPA02	Thumb-lock tyre valve connector

Euro Style Connectors

FEATURES

Clips onto tyre valve to allow operator to work away from tyre

Open and closed end options available

Suitable for use in tyreshops

PART NUMBER	VALVE CONNECTION TYPE	VALVE STYLE	INLET SIZE
COBE72	Euro style Clip-on	Open end	4.75 mm (3/16 in)
CO8H72	Euro style Clip-on	Open end	6.35 mm (1/4 in)
CO8T73	Euro style Clip-on	Open end	Rc 1/4
CO8U73	Euro style Clip-on	Closed end	Rc 1/4
CO13A71	12v1 Euro style Clip-on	Open end	6.35 mm (1/4 in)



Other Connectors

A range of connectors for specialist applications.

FEATURES

Able to be used with a MK3

PART NUMBER	VALVE CONNECTION TYPE	VALVE STYLE	INLET SIZE
CO9H03	Screw-on	Open end	6.35 mm (1/4 in)
CO9P03	Screw-on	Open end	Rp 1/4
CO12A03	Hold-on	Open end	Rp 1/4



Large Bore Connectors

A range of large bore connectors suitable for 12v1 tyre valve threads. Often referred to as EM connectors. Available in a variety of styles to suit most applications.

PART NUMBER	VALVE CONNECTION TYPE	VALVE STYLE	INLET SIZE
CO7002	12v1 Clip-on	Closed end	Rc 1/4 female
CO7P02	12v1 Clip-on	Open end	Rc 1/4 female
CO13A71	12v1 Euro style	Open end	6.35 mm (1/4 in)
CO10H03	12v1 Screw-on	Open end	6.35 mm (1/4 in)
CO10P03	12v1 Screw-on	Open end	Rp 1/4
CO11A03	12v1 In-line	Open end	Rp 1/4



Valve Core Retracting Tool

Designed for the safe installation and removal of tyre valve cores during the inflation of commercial vehicle tyres. Vastly reduces inflation/deflation time of commercial vehicle tyres by allowing the operator to remove the valve core safely during the process. Eliminates the risk of serious injuries from "flying" valve cores.

FEATURES

Clear body allows operator to see valve core is fully retracted

PART NUMBER	VALVE CONNECTION TYPE	INLET SIZE
CRT001	Euro Clip-on	6.35 mm (1/4 in)
CRT002	Clip-on	6.35 mm (1/4 in)



Tyre Care

PCL manufacture a range of tyre care products including the traditional “pencil style” tyre pressure gauges and VOSA approved tyre tread depth gauges. To complete the range PCL offer a selection of “glove box” essentials which include footpumps, 12v products powered through a cigarette lighter socket, and the latest offerings in electronic tyre pressure gauges.





Air Tools

Air Tool
Accessories

Nitrogen Inflation
Equipment

Tyre Inflation
Equipment

Tyre Care



Pocket Gauges

Incorporates a self-adjusting friction device which enables the pressure to be read when the tyre pressure gauge is removed from the tyre valve, and a positive sealing washer to ensure reliability. Includes integral pocket clip and removable protective cap. Supplied in a protective tin.



FEATURES

Angled head is designed to fit onto the valve at 90° Complies with BS EN 12645:1999

In-line head is used where direct access to the tyre valve is required

PART NUMBER	DESCRIPTION	HEAD TYPE	CALIBRATION	RESOLUTION
TPG1H17	-	Angled	6-50 lbf/in ² & 0.5-3.4 bar	1 lb & 0.1 bar units
TPG20H17	Display packet	In-line	6-50 lbf/in ² & 0.5-3.4 bar	1 lb & 0.1 bar units
TPG1H01	Bulk	Angled	6-50 lbf/in ² & 0.5-3.4 bar	1 lb & 0.1 bar units
TPG20H01	Bulk	In-line	6-50 lbf/in ² & 0.5-3.4 bar	1 lb & 0.1 bar units

Service Gauge

Incorporates a self-adjusting friction device which enables the pressure to be read when the tyre pressure gauge is removed from the tyre valve, and a positive sealing washer to ensure reliability. Includes integral pocket clip and removable protective cap. Supplied in a protective tin.

FEATURES

Twin headed gauge is suitable for commercial vehicles Complies with BS EN 12645:1999

PART NUMBER	DESCRIPTION	HEAD TYPE	CALIBRATION	RESOLUTION
TPG4H17	Display packet	Twin	10-120 lbf/in ² & 0.8-8.2 bar	2 lb & 0.2 bar units
TPG4H01	Bulk	Twin	10-120 lbf/in ² & 0.8-8.2 bar	2 lb & 0.2 bar units



Universal Service Gauges

Suitable for cars and commercial vehicles, it is fitted with an extra-large filter to protect the quality mechanism, and is supplied carton packed.

FEATURES

Engineered for hard usage over a long period Fitted with extra large filter to protect the quality mechanism

Suitable for all cars and commercial vehicles

PART NUMBER	DESCRIPTION	HEAD TYPE	CALIBRATION	RESOLUTION
TPG57H03	Chrome plated tubing with lanyard ring	Twin	10-160 lbf/in ² & 0.8-11 bar	2 lb & 0.2 bar units
TPG60H03	Heavy duty black vulcanite handle	Twin	10-160 lbf/in ² & 0.8-11 bar	2 lb & 0.2 bar units



Twin Head Tyre Gauge

With its hard-wearing black vulcanite handle, the TPG54 is designed to withstand continual heavy usage. Suitable for use with the standard (8v1) and large bore (12v1) tyre valves.

FEATURES

Black vulcanite handle to withstand continual hard usage Suitable for use with standard (8v1) and large bore (12v1) tyre valves

PART NUMBER	HEAD TYPE	CALIBRATION	RESOLUTION
TPG54H03	8v1 & 12v1	50-300 lbf/in ² & 4-20 bar	5 lb & 0.2 bar units

Also available: RPR1H02 - Reconditioning and recalibration service (including a certificate of conformity)



Digital Universal Service Gauge

This Digital Universal Service Gauge is self-calibrating and features a 90 second auto power off. Easy to use - simply press the button and wait for the beep, the gauge is then ready to use.

FEATURES

4 selectable calibration options Replaceable battery
Swivel head to allow easy access to the tyre valve Red backlit screen for easy reading in dark or low light areas
Clear large display

PART NUMBER	HEAD TYPE	CALIBRATION	RESOLUTION
DUSG1	Angled	0-170 lbf/in ² / 0-12 bar / 0-1200 kPa / 0-12 kg/cm ²	+/- 1%



TyreCheck

TyreCheck is the professionals choice of dial pressure gauge for fast, clear and accurate readings.

FEATURES

Dial gauge, accurate and easy to read Impact absorbing rubber outer casing
Integral swivel fitting on Twin Hold-on, for ease of use Choice of 2 sizes - 63 mm and 80 mm diameter dials

PART NUMBER	CALIBRATION	RESOLUTION	DIAL DIAMETER (mm)	TYRE VALVE CONNECTION
DPG1H03	0-170 lbf/in ² & 0-12 bar	2 lb & 0.1 bar units	63	Twin Hold-on
DPG1H08	0-170 lbf/in ² & 0-12 bar	2 lb & 0.1 bar units	63	Euro Hold-on
DPG3H03	0-170 lbf/in ² & 0-12 bar	2 lb & 0.1 bar units	80	Twin Hold-on
DPG3H08	0-170 lbf/in ² & 0-12 bar	2 lb & 0.1 bar units	80	Euro Hold-on

Available in a wide range of calibrations



Tyre Tread Depth Gauge

VOSA APPROVED



PCL's "Made in Sheffield" Tyre Tread Depth Gauge is easy to read, it provides accurate measurement of tread 1-26 mm and has a handy pocket clip. VOSA approved with a 1.6 mm mark.

FEATURES

Accurate measurement of tread 1-26 mm in 1 mm increments (1.6 mm mark)

Department of Transport accepted for MoT testing

Easy to read

VOSA approved Tyre Tread Depth Gauge

PART NUMBER

TDG16C01

CALIBRATION

1-26 mm with 1.6 mm mark

Tyre Safety Pack



The handy Tyre Safety Pack comprises a tyre pressure gauge and tyre tread depth gauge. Supplied in a durable, reusable tin with a protective foam insert, the pack is available with either the TPG1 or TPG20.

FEATURES

A handy pack comprising of a tyre pressure gauge and tyre depth gauge

PART NUMBER

TSP1T15

TSP20T15

CONTENTS

TPG1H01 & TDG16C01

TPG20H01 & TDG16C01

Digital Tyre Pressure & Tread Depth Gauge



This Digital Tyre Pressure & Tread Depth Gauge (with light) is self-calibrating and features a 90 second auto power off. Easy to use - it displays an illegal tyre tread depth warning. The stylish blue light is ideal for working in the dark.

FEATURES

Illegal tyre tread depth warning - display will flash if the reading is 1.6 mm or less

Self calibrating

Auto power off

x1 CR2032 3 v battery supplied

PART NUMBER

DTPG7

CALIBRATION

2-100 lbf/in² / 0.15-7 bar & 15-700 kPa & 0-15 mm

Digital Tyre Pressure Gauge



This Digital Tyre Pressure Gauge is self-calibrating and features a 30 second auto power off. Easy to use, simply press the 'ON' button and the gauge is then ready to use. Tyre pressures are displayed in your choice of 4 pressure measurements.

FEATURES

4 measurement options - psi, bar, kPa, kg/cm²

Auto power off

Clear large backlit display

x2 AAA / LR03 batteries supplied

PART NUMBER

DTPG8

CALIBRATION

0-174 psi / 0-12 bar / 0-1200 kPa / 0-12 kg/cm²

Digital Tyre Pressure Gauge Kit

The DAC51 and DAC54 high pressure digital gauges are the latest in the line of quality high pressure measuring tools from PCL. Built for fast, safe and accurate tyre pressure measurement in rugged and testing environments they are the ideal tools for aviation and other high pressure applications.

FEATURES

Allows pressure to be measured and stored for easy reading via a hold function

Includes 2 Connector types of 8v1 and 12v1 valve designation

Contained within a sturdy plastic box

PART NUMBER	PRESSURE	RESOLUTION	HOSE	CONNECTOR TYPE
DAC51A - PSI	1-174 psi	0.2 psi	PVC Max working pressure 20 bar Hose length 0.3 m	8v1 Twin hold on 12v1 Single in-line hold on, interchangeable
DAC51C - BAR	0.1-12 bar	0.01 bar		
DAC54A - PSI	3-319 psi	1 psi	Skydrol resistant Max working pressure 225 bar Hose length 0.3 m	8v1 Twin hold on 12v1 Single in-line hold on, interchangeable
DAC54C - BAR	0.2-22 bar	0.1 bar		



Air Tools

Air Tool Accessories

Nitrogen Inflation Equipment

Tyre Inflation Equipment

Digital Tyre Tread Depth Gauge

A straight forward and simple to use tyre tread depth measurement device with three different read settings.

FEATURES

Made from extra strong carbon fibre composite

Metric, decimal inch and fraction inch (1/64 in) toggle

Large LCD display

x1 SR44 1.5 v battery supplied

Zero setting in any position

PART NUMBER	RANGE	CALIBRATION
DTG1D04	0-25 mm / 0-1 in	0-25 mm / 0-1 in



Tyre Care

Workshop Accessories

Footpumps

PCL's single footpump is gauge-calibrated model with easy to read dial gauge. The all steel construction provides added strength, and the barrel is pressure-sealed to prevent leakage. It has a sturdy anti-slip pedal and rubber feet, and is supplied with adaptors for airbeds, cycle valves and footballs.

FEATURES

Steel construction for added strength

Barrel pressure sealed to prevent leakage

Anti-corrosive finish

PART NUMBER	BARRELS	CALIBRATION
FP4H02/3	Single	0-100 lbf/in ² & 0-7 bar
FP7H02/3	Double	0-100 lbf/in ² & 0-7 bar



Hose

Hose Fittings

Couplings & Adaptors

12 v 3-in-1 Tyre Inflator



This high volume 12 v air compressor is suitable for cars, vans, 4x4 vehicles, vans and jeeps. Features a convenient work light.

FEATURES

High power 12v air compressor - operates from cigarette lighter socket	Built-in work light for use at night
Air hose with thumb-lock tyre valve connector	Quick and easy inflation

PART NUMBER

ATT741

CALIBRATION

0-75 lbf/in²

Multifunctional Work Light



This multifunctional work light is ideal for increasing vision in areas of low light and during the winter months when days are very short. Ideal for increasing light in under car areas. Also very handy as a general purpose light that can either be hung up or used with the magnet attached to the rear.

FEATURES

24 high intensity output LEDs that never get hot	Requires x3 AA batteries (not supplied)
4 hours continuous use	

PART NUMBER

MA001

LED LIFETIME (HOURS)

100,000

FULL TIME SINGLE USE (HOURS)

96

Tyre Valve Tool



This versatile 4-in-1 tool offers these functions

- | | |
|---|---------------------------------|
| 1) Rethread the external part of the valve stem | 3) Remove the valve core |
| 2) Rethread the inside of the valve stem | 4) Extract a damaged valve core |

PART NUMBER

TVT01

VALVE CONNECTION TYPE

Case-hardened mild steel

INLET SIZE

Zinc plated

Nitrogen Analyser



The PCL Nitrogen Analyser gives you the actual Nitrogen percentage in your vessel. Most other systems in the market show you the Oxygen percentage and require a calculation to convert it to the Nitrogen percentage.

BENEFITS

- Compact and ergonomic design
- Auto power off battery saving system

FEATURES

- One button operation for simple use
- Error code and diagnostics for simple troubleshooting

PART NUMBER

N2A001

DESCRIPTION

Nitrogen Analyser

Also available: N2AS001 - Replacement Sensor

The PCL heritage

Founded in 1938, when the first pressure gauges were designed and manufactured in Sheffield. Now part of the HORNGROUP, along with the TECALEMIT and TECALEMIT USA brands, PCL is recognised as the global market leader in the design, manufacture and distribution of the most advanced and comprehensive portfolio of forecourt tyre inflation products.

With over 75 years of experience designing and manufacturing tyre inflation and compressed air equipment, PCL is a dynamic yet customer focussed and forward thinking company.

PCL's products are a familiar sight in garage forecourts, tyre shops,

factories and workshops throughout the world. PCL continue to expand globally, providing first-class, reliable and cost effective products for tyre inflation and pneumatics, with localised service in all locations.



Our dedication to customers means we are not just a supplier of products, we act as a partner too. We provide you with a full after sales service, as well as support to sell our products, such as bespoke product literature, training and product user manuals.

Our customers have access to a full technical support hotline, and site visits where necessary. We also help you to identify the best revenue generators for your business.

bsi.



Workshop Accessories

A range of products no workshop should be without. From the complete range of air treatment, to a variety of blowguns. Includes a range of HVLP compliant spray guns, suitable for most light and medium viscosity spray applications.





Workshop
Accessories

Tyre Care

Tyre Inflation
Equipment

Nitrogen Inflation
Equipment

Air Tool
Accessories

Air Tools

Filter-Regulator & Lubricator



FEATURES

Selectable manual/semi-automatic drain	Locking device
10 micron filter	Complete with wall bracket and pressure gauge

PART NUMBER	PORT SIZE (in)	ADJUSTMENT (bar)	MAXIMUM INLET PRESSURE (bar)	FLOW @ 6 bar
ATCFRL6	1/4	0-12	12	1,800 l/min
ATCFRL12	1/2	0-16	16	5,000 l/min

Filter-Regulator



FEATURES

Selectable manual/semi-automatic drain	Locking device
10 micron filter	Complete with wall bracket and pressure gauge

PART NUMBER	PORT SIZE (in)	ADJUSTMENT (bar)	MAXIMUM INLET PRESSURE (bar)	FLOW @ 6 bar
ATC6	1/4	0-12	12	1,800 l/min
ATC12	1/2	0-16	16	5,000 l/min

Filter



FEATURES

Selectable manual/semi-automatic drain	Complete with wall bracket
10 micron filter	

PART NUMBER	PORT SIZE (in)	MAXIMUM INLET PRESSURE (bar)	FLOW @ 6 bar
ATF6	1/4	12	2,100 l/min
ATF12	1/2	16	6,000 l/min

Regulator



FEATURES

Locking device	Complete with wall bracket and pressure gauge
----------------	---

PART NUMBER	PORT SIZE (in)	ADJUSTMENT (bar)	MAXIMUM INLET PRESSURE (bar)	FLOW @ 6 bar
ATR6	1/4	0-12	12	1,700 l/min
ATR12	1/2	0-16	16	6,000 l/min

Dropout® Water Separator



A unique, patent protected product designed to revolutionise the compressed air industry - liquid water removal guaranteed.

BENEFITS

Guaranteed 99.99% liquid water removal	Particulate removal to 1 micron
Low cost of ownership	Maintenance free
Complete with wall bracket and drain valve	

FEATURES

Performance does not depend on the compressed air having a stable flow rate or high velocity	Modular, scalable design delivers a wide flow rate product range without compromising the efficiency of removal of water and solid particles
Easy to clean	Sealed for life aluminium housing
No requirement for replacement filter cartridges	No increase in pressure drop caused by blocked filters
Unique patent protected multiple impact design operates far more efficiently than conventional filter designs	No drop in liquid water or partial removal efficiency regardless of flow rate or duration of time installed
Minimal inlet/outlet pressure drop	Pressure Drop (bar): 0.38

PART NUMBER	PORT SIZE (in)	OPTIMUM FLOW RATE	MAXIMUM FLOW RATE	MAXIMUM INLET PRESSURE (bar)	DRAIN CONNECTION
PDO200A	1/2 BSPT	5.3 cfm / 150 l/min	8.8 cfm / 250 l/min	15	1/4" BSPT male
PDO600A	1 BSPT	21.2 cfm / 600 l/min	35.3 cfm / 1000 l/min	15	1/2" BSPT male

Dropout® Auto-drain



The Dropout® Auto-drain is designed to remove all contaminants from the Dropout units automatically. It has two 1/2 in inlet connections enabling flexible installation. It is supplied with a manual blanking plug to block unused port.

FEATURES

Drains all contaminants (liquid water & oil and solid particles)	No mains power
Automatic and manual drain options	Easy to install
Maintenance free	

PART NUMBER	PORT SIZE (in)	MAXIMUM INLET PRESSURE (bar)
PDOAD128	1/2 BSPT	16

Dropout® Water Separator - Stainless Steel

Stainless Steel Grade 304 version of the Dropout® Water Separator. A unique, patent protected product designed to revolutionise the compressed air industry - liquid water removal guaranteed.

FEATURES

Guaranteed 99.99% liquid water removal	Particulate removal to 1 micron
Low cost of ownership	Maintenance free
Complete with wall bracket and drain valve	Supplied in blister pack

PART NUMBER	PORT SIZE (in)	MAXIMUM FLOW RATE	MAXIMUM INLET PRESSURE (bar)
PDO600S	1/4 BSPT	3.2 cfm / 90 l/min	15
PDO300S	3/4 BSPT	15.9 cfm / 450 l/min	15
PDO600S	3/4 BSPT	31.8 cfm / 900 l/min	15
PDO900S	3/4 BSPT	47.7 cfm / 1,350 l/min	15
PDO1500S	1 BSPT	81.7 cfm / 2,314 l/min	15
PDO2000S	1 BSPT	108.9 cfm / 3,085 l/min	15



Dropout® Titan Portable Water Separator

Where you have a number of applications that you don't use simultaneously, the Dropout® Portable Water Separator allows you to remove water/solid contaminant cost effectively.

FEATURES

Portability - small and lightweight enough to carry to your point of use	'Plug and play'- transfer easily between applications
Pressure gauges as standard	Integrated pneumatic auto-drain (no power required)
99.99% liquid water removal	Particle removal 0.5 micron
No replacement filter element	Supplied in blister pack

PART NUMBER	PORT SIZE (in)	MAXIMUM FLOW RATE	MAXIMUM INLET PRESSURE (bar)
PD0900T8R	3/4 BSPT	45 cfm / 1,275 l/min	15



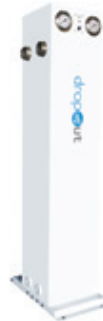
Dropout® Titan Water Separator

The Dropout® Titan Water Separator has been designed to operate in environments where there is a relatively high flow of air and where efficient bulk liquid water removal is essential.

FEATURES

99.99% liquid water removal	Particle removal 3 micron
No replacement filter element	Fitted with pressure gauge
Auto-drain	

PART NUMBER	PORT SIZE (in)	MAXIMUM FLOW RATE	MAXIMUM INLET PRESSURE (bar)
PDO4000T	1 BSPT	254.3 cfm / 7,200 l/min	15
PDO8000T	2 BSPT	501.5 cfm / 14,200 l/min	15



Air Tools

Air Tool Accessories

Nitrogen Inflation Equipment

Tyre Inflation Equipment

Tyre Care

Workshop Accessories

Hose

Hose Fittings

Couplings & Adaptors

Plastic Blowgun



FEATURES

Ergonomically designed handle, for comfort in use

Supplied in blister pack

Valve allows trigger-adjustable airflow

PART NUMBER

BG5002

GRIP STYLE

Pistol

NOZZLE STYLE

Conical

Plastic Blowgun (9" extension)



FEATURES

Ergonomically designed handle, for comfort in use

Supplied in blister pack

Valve allows trigger-adjustable airflow

Nozzle can be cut and bent to suit application

PART NUMBER

BG5007

GRIP STYLE

Pistol

NOZZLE STYLE

9 in extension

TURBO Nozzle Safety Blowgun

TURBO nozzle safety blowgun increases air flow by 100%.



FEATURES

Ergonomically designed handle, for comfort in use

Innovative nozzle design ensures that the airflow cannot be blocked

Valve allows trigger-adjustable airflow

Robust and impact resistant material

Guaranteed long service life

Guaranteed leak-free valve system, even after millions of operations

PART NUMBER	MAXIMUM SUPPLY PRESSURE	AIR INLET	AIR FLOW @ 8 bar	NOISE @ 8 bar
BG5008	16 bar / 232 lbf/in ²	Rp 1/4	13.4 cfm / 380 l/min	<90.0 dB

Standard Safety Nozzle Blowgun

Manufactured from chemical and impact resistant acetal resin.

FEATURES

Ergonomically designed handle, for comfort in use	Innovative nozzle design ensures that the airflow cannot be blocked
Valve allows trigger-adjustable airflow	Supplied in blister pack



PART NUMBER	MAXIMUM SUPPLY PRESSURE	AIR INLET	AIR FLOW @ 8 bar	TEMPERATURE RANGE
BG5004	10 bar / 140 lbf/in ²	1/4 Female	9.3 cfm / 270 l/min	0°C to 80°C

2 Bar Auto Safety Blowgun

2 bar automatic pressure reduction, low noise level (meets OSHA standard). Conforms to HSE requirements. Air inlet automatically reduced to 2 bar.

FEATURES

Ergonomically designed handle, for comfort in use	Innovative nozzle design ensures that the airflow cannot be blocked
Valve allows trigger-adjustable airflow	Robust and impact resistant material
Guaranteed long service life	Guaranteed leak-free valve system, even after millions of operations



PART NUMBER	MAXIMUM SUPPLY PRESSURE	AIR INLET	AIR FLOW @ 8 bar	NOISE @ 8 bar
BG5009	16 bar / 232 lbf/in ²	Rp 1/4	4.9 cfm / 140 l/min	<82.0 dB

Low Noise Safety Blowgun

Low Noise Safety blowgun meets OSHA standard.

FEATURES

Ergonomically designed handle, for comfort in use	Innovative nozzle design ensures that the airflow cannot be blocked
Valve allows trigger-adjustable airflow	Robust and impact resistant material
Guaranteed long service life	Guaranteed leak-free valve system, even after millions of operations



PART NUMBER	MAXIMUM SUPPLY PRESSURE	AIR INLET	AIR FLOW @ 8 bar	NOISE @ 8 bar
BG5006	16 bar / 232 lbf/in ²	Rp 1/4	9.8 cfm / 280 l/min	<78.0 dB

Safety Aircurtain

FEATURES

Ergonomically designed handle, for comfort in use	Safety Aircurtain provides a curtain of air
Valve allows trigger-adjustable airflow	

PART NUMBER	GRIP STYLE	NOZZLE STYLE
BG5005	Pistol	Safety Aircurtain



Air Tools

Air Tool Accessories

Nitrogen Inflation Equipment

Tyre Inflation Equipment

Tyre Care

Workshop Accessories

Hose

Hose Fittings

Couplings & Adaptors

Pistol Blowguns



FEATURES

Robust and compact design
 Extensive, easy to fit with additional nozzle range

Supplied in blister pack

PART NUMBER

BG405

GRIP STYLE

Pistol

NOZZLE STYLE

Conical & Safety

Palm Blowguns



FEATURES

Robust and compact design
 Extensive, easy to fit with additional nozzle range

Supplied in blister pack

PART NUMBER

BG105

BG106

BG605

GRIP STYLE

Palm

Palm

Palm

NOZZLE STYLE

Conical

Safety

Conical & Safety

Blowgun Nozzles



A comprehensive range of threaded (1/8 in inlet), easy to fit, interchangeable nozzles to cater for all blowgun applications.

PART NUMBER

BGN4088

BGN461

BGN466

TYPE

Safety

9 in extension

Conical

AirVac



The PCL AirVac is an ideal addition to any toolbox. Includes vacuum and blow functions, complete with numerous attachments to keep your workspace clean and free of debris.

FEATURES

Dust bag and extension tube
 3 different nozzle attachments

1 extension nozzle

Body and canister material: Aluminium and plastic

PART NUMBER

AV301

AIR CONSUMPTION (cfm)

3.6 cfm / 100 l/min

HVLP Suction Spray Gun

PCL's HVLP Suction Spray Gun utilises a precision engineered brass air cap, stainless steel fluid nozzle and needle – providing a premium quality paint finish. This newly developed "compliant" spray gun offers high transfer efficiency, lower material consumption and is environmentally friendly.

FEATURES

Suitable for water based paints
1.7 mm fluid nozzle

1 litre aluminium cup

PART NUMBER	AIR CONSUMPTION (cfm)	MAXIMUM WORKING PRESSURE (lbf/in ²)
SG01P	6	50

Also available: SPK109 – 2 mm Cap & Needle Set



HVLP Gravity Spray Gun

PCL's HVLP Gravity Spray Gun utilises a precision engineered brass air cap, stainless steel fluid nozzle and needle – providing a premium quality paint finish. This newly developed "compliant" spray gun offers high transfer efficiency, lower material consumption and is environmentally friendly.

FEATURES

Suitable for water based paints
1.4 mm fluid nozzle

0.6 litre plastic cup

PART NUMBER	AIR CONSUMPTION (cfm)	MAXIMUM WORKING PRESSURE (lbf/in ²)
SG02P	5.5	50



'Economy' Suction Spray Gun

This new suction spray gun has been added to PCL's economy range of products that are designed for those looking for a fit for purpose product that doesn't cost the earth. Material is lightweight aluminium and the product is supplied with a 1.5 mm nozzle as standard. Suitable for light viscosity painting applications.

FEATURES

Tank capacity: 0.7 litre
Nozzle size: 1.5 mm

Pattern width: 140-180 mm
Body and canister material: Aluminium

PART NUMBER	AIR CONSUMPTION (cfm)	OPERATING PRESSURE (bar)
SG01L	4.2-7.1	3-4



'Economy' Gravity Spray Gun

This new gravity spray gun has been added to PCL's economy range of products that are designed for those looking for a fit for purpose product that doesn't cost the earth. Material is lightweight aluminium and the product is supplied with a 1.5mm nozzle as standard. Suitable for light viscosity painting applications.

FEATURES

Tank capacity: 0.6 litre
Nozzle size: 1.5 mm

Pattern width: 120-250 mm
Body and canister material: Aluminium and plastic

PART NUMBER	AIR CONSUMPTION (cfm)	OPERATING PRESSURE (bar)
SG02L	4.2-7.1	3-4



Brake Bleeders



PCL Brake bleeders are used for bleeding and refilling the brake systems of all types of vehicles, quickly and cleanly by a single person. Available with a replenishment system.

FEATURES

Simple, single person operation	Does not require specialised brake reservoir caps
Quick, clean and efficient	Draws fluid from the bleed nipple enabling either bleeding or full replacement of fluid in system

PART NUMBER	SUPPLIED WITH	MAXIMUM WORKING PRESSURE	AIR CONSUMPTION @ 8 bar	AIR INLET
BB143102		6-12 bar / 87-174 psi	6.4 cfm / 180 l/min	Rp 1/4
BB143112	Replenishment system	6-12 bar / 87-174 psi	6.4 cfm / 180 l/min	Rp 1/4

Body Gun



PCL Body Guns are suitable for both water-based and oil-based fluids and are designed to be user-friendly and easy to operate. The fluid flow is adjustable and easily regulated with the trigger. The ergonomic handle never cools during use.

FEATURES

Maximum working pressure: 16 bar / 232 psi

PART NUMBER	DESCRIPTION	AIR CONSUMPTION @ 8 bar WITH NOZZLE	AIR CONSUMPTION @ 8 bar WITH HOSE	AIR INLET
BDY146105	Body Gun and extension probe	380 l/min / 13.4 cfm	6.4 cfm / 180 l/min	Rp 1/4

Also available: [BDY146110](#) - 900 mm Extension Probe

Cleaning (Paraffin) Gun



Powerful, efficient cleaning guns suitable for most kinds of cleaning agents and so are ideal for degreasing, cleaning and detergent coating purposes, even where aggressive chemicals are used.

FEATURES

User friendly design	Guaranteed long service life
Robust and impact resistant material	Guaranteed leak-free valve system, even after millions of operations

PART NUMBER	MAXIMUM WORKING PRESSURE	AIR CONSUMPTION @ 8 bar WITH HOSE	AIR INLET
PSG142130	12 bar / 174 psi	3.5 cfm / 100 l/min	Rp 1/4

Sandblasting Gun



Efficiently remove rust and ingrained dirt from various surfaces, are lightweight and easily operated with practical refillable 1.2 litre containers.

FEATURES

User friendly design	Guaranteed long service life
Robust and impact resistant material	Guaranteed leak-free valve system, even after millions of operations

PART NUMBER	MAXIMUM WORKING PRESSURE	AIR CONSUMPTION @ 8 bar WITH NOZZLE	AIR INLET
SBG145100	12 bar / 174 psi	15.9 cfm / 450 l/min	Rp 1/4

Oil Extractor

Suitable for removing various types of oils, i.e. hydraulic, cutting and engine oils. Reliable and easily operated and are ideal for changing oil on tractors, cars, boats, motorcycles, garden machinery and other types of engines.

FEATURES

Simple, single person operation Oil flow is infinitely adjustable and easily regulated by the trigger

Quick, clean and efficient

PART NUMBER	MAXIMUM WORKING PRESSURE	AIR CONSUMPTION @ 8 bar WITH NOZZLE	AIR INLET
OE147160	12 bar / 174 psi	64 cfm / 180 l/min	Rp 1/4



Underseal Gun

PCL Underseal Guns are suitable for the treatment and maintenance of cars and other vehicles that are subject to corrosion and stone chipping. Suitable for both water-based and oil-based fluids.

FEATURES

User friendly design Guaranteed long service life

Robust and impact resistant material Guaranteed leak-free valve system, even after millions of operations

Suitable for most disposable 1 litre containers

PART NUMBER	MAXIMUM WORKING PRESSURE	AIR CONSUMPTION @ 8 bar WITH NOZZLE	AIR INLET
BDY146134	16 bar / 232 psi	13.4 cfm / 380 l/min	Rp 1/4



Rad Filler/Water Dispenser

Designed to dispense water in such applications as a radiator or windscreen water bottle filler. The sturdy design incorporates a lever for instant flow and cut-off.

PART NUMBER	INLET
RF104	Rp 3/8



Air & Water Gun

This functional Air & Water Gun maximises the cleaning capabilities of combined air and water power. It is ideal for washing off, cleaning, degreasing fluids and compounds from vehicles or machines, and can be fitted wherever there is a supply of air and water. This Air & Water Gun features a strong jet which quickly removes dirt and grease without damaging surfaces.

FEATURES

Maximum working pressure: 6-10 bar / 87-140 psi Water atomised by air pressure

Alloy body construction for strength Strong jet quickly removes dirt and grease without damaging the surface

Ergonomically designed handle and trigger provides comfort in use Supplied complete with 13 mm tailpiece and integral 1/4 in male thread

PART NUMBER	AIR INLET	AIR CONSUMPTION	WATER CONNECTION	WATER CONSUMPTION (l/min)
AWG03	Rp 1/4	13.4 cfm / 380 l/min	Nipple for water coupling	4-8

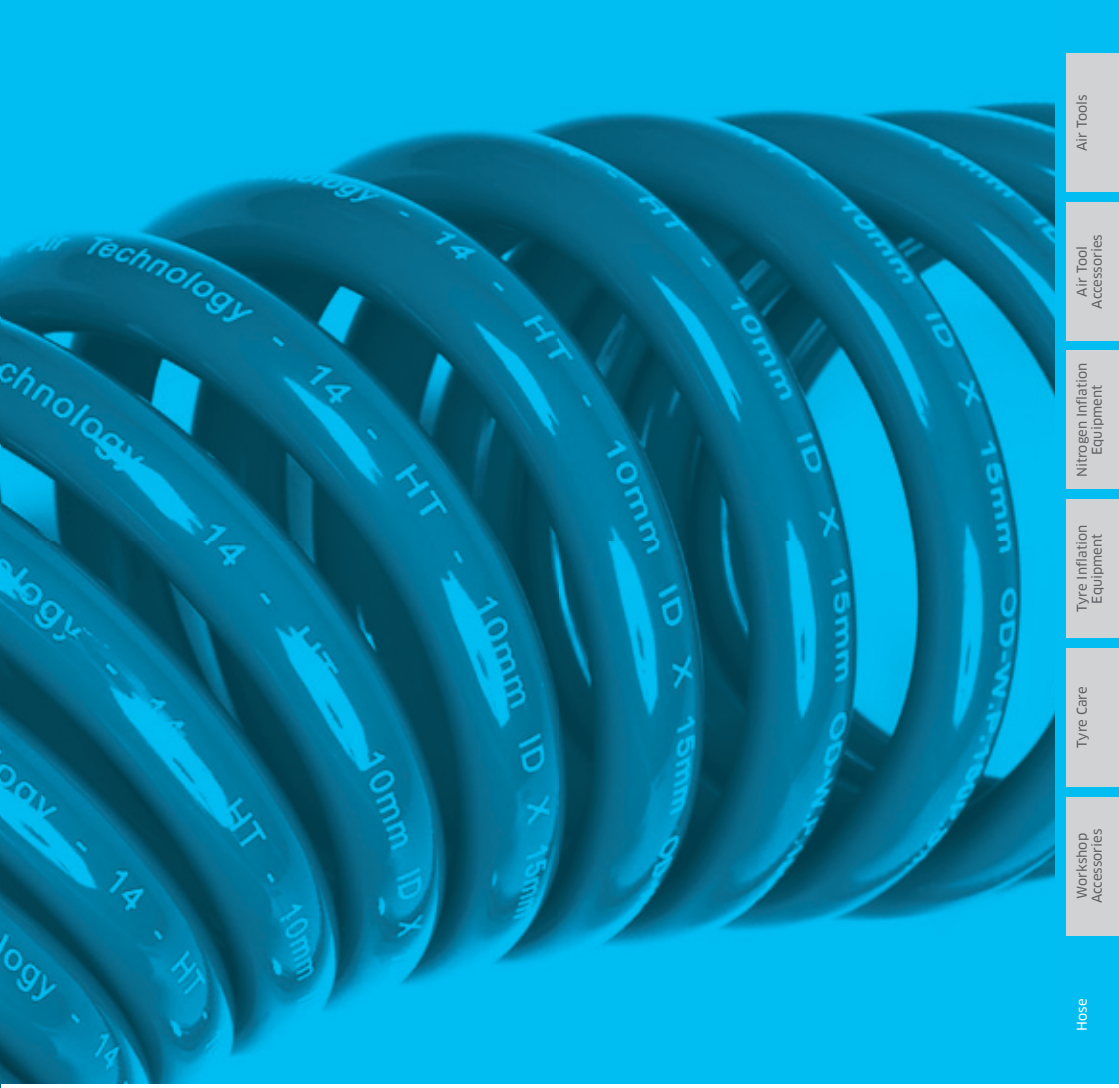


Hose

To complement PCL's vast range of couplings, adaptors and tyre inflation equipment, a wide variety of air hoses are available. PCL's air hoses come in convenient cut lengths between 10m and 100m.

For your convenience PCL also has a range of hose assemblies, complete with couplings and adaptors - just plug in and go.





Workshop Accessories

Tyre Care

Tyre Inflation Equipment

Nitrogen Inflation Equipment

Air Tool Accessories

Air Tools

Hose



Rubber Alloy Air Hose



PCL's air hose is a Rubber PVC Alloy (PTE) compound; it looks and feels like rubber but doesn't have the downsides associated with rubber.

It is available in cut lengths from 1 m to 100 m. Users are able to order the precise length required, thereby reducing waste.

FEATURES

Excellent abrasion resistance	Resistance to oil and fuels
Good flexibility and kink resistant	Silicone free
Working pressure: 300 lbf/in ² / 21 bar	Burst pressure: 63 bar
Temperature range: -10°C to 60°C	

PART NUMBER	INSIDE DIAMETER	OUTSIDE DIAMETER (mm)
HS22*01	7 mm / 1/4 in	14
HS24*01	8 mm / 5/16 in	15
HS25*01	10 mm / 3/8 in	17
HS27*01	13 mm / 1/2 in	21

When ordering, replace * in the part number with the relevant length code show below

Please note - an increase in temperature above 20°C will affect the working pressure quoted above

LENGTH (m)	CODE	LENGTH (m)	CODE	LENGTH (m)	CODE	LENGTH (m)	CODE	LENGTH (m)	CODE
10	C	15	D	20	E	30	H	100	X

Nylon Tubing



Manufactured from high quality nylon granules. This tubing is ideally suited for use with push-in fittings and for a wide range of industrial applications, including: compressed air, lubrication, refrigeration, air conditioning, coolant lines, fuels and oils.

Supplied in 30 m coils.

FEATURES

Available in 3 colours: Natural, Black and Blue

Temperature range: -35°C to 70°C

PART NUMBER	INSIDE DIAMETER (mm)	OUTSIDE DIAMETER (mm)	WORKING PRESSURE	BEND RADIUS (mm)
TRN-6/4-*	4	6	350 lbf/in ² / 24 bar	35
TRN-10/8-*	8	10	200 lbf/in ² / 14 bar	100
TRN-4/2.5-*	2.5	4	400 lbf/in ² / 27 bar	16
TRN-12/10-*	10	12	160 lbf/in ² / 11 bar	125
TRN-8/6-*	6	8	255 lbf/in ² / 17 bar	60

When ordering, replace * in the part number with your colour choice. If no colour choice is specified Natural will be supplied as standard

Please note - values stated are based on the short term burst pressure of nylon at 20°C using a 4:1 safety factor

Air Hoses with Fittings

PCL's air hose is a Rubber PVC Alloy (PTE) compound; it looks and feels like rubber but doesn't have the downsides associated with rubber.

Available in popular cut lengths complete with end fittings, thereby saving you time and the need for expensive crimping equipment.

FEATURES

Excellent abrasion resistance	Resistance to oil and fuels
Good flexibility and kink resistant	Silicone free
Working pressure: 300 lbf/in ² / 21 bar	Burst pressure: 63 bar
Temperature range: -10°C to 60°C	

Please note - an increase in temperature above 20°C will affect the working pressure quoted above



5/16" Hose

PART NUMBER	LENGTH (m)	INSIDE DIAMETER	FITTINGS
HA2012	5	8 mm / 5/16 in	Rp 1/4 swivel ends
HA2017	10	8 mm / 5/16 in	Rp 1/4 swivel ends
HA2021	15	8 mm / 5/16 in	Rp 1/4 swivel ends
HA2002	20	8 mm / 5/16 in	Rp 1/4 swivel ends

3/8" Hose

PART NUMBER	LENGTH (m)	INSIDE DIAMETER	FITTINGS
HA2043	5	10 mm / 3/8 in	Rp 1/4 swivel ends
HA2044	10	10 mm / 3/8 in	Rp 1/4 swivel ends
HA2045	15	10 mm / 3/8 in	Rp 1/4 swivel ends
HA2046	20	10 mm / 3/8 in	Rp 1/4 swivel ends

1/2" Hose

PART NUMBER	LENGTH (m)	INSIDE DIAMETER	FITTINGS
HA2019	10	13 mm / 1/2 in	Rp 1/2 swivel ends
HA2023	15	13 mm / 1/2 in	Rp 1/2 swivel ends
HA2004	20	13 mm / 1/2 in	Rp 1/2 swivel ends

High Visibility Air Hoses with Fitting

Reinforced air hose manufactured in high visibility yellow material for extra safety.

Available in popular cut lengths complete with end fittings, thereby saving you time and the need for expensive crimping equipment.

FEATURES

Working pressure: 300 lbf/in ² / 21 bar	Burst pressure: 63 bar
Temperature range: -10°C to 80°C	Fittings: Rp 1/2 swivel ends

Please note - an increase in temperature above 20°C will affect the working pressure quoted above



PART NUMBER	LENGTH (m)	INSIDE DIAMETER
HA2044HV	10	10 mm / 3/8 in
HA2046HV	20	10 mm / 3/8 in

Vertex Coupling & Standard Adaptor Air Tool Hose



PCL's air tool hose is a Rubber PVC Alloy (PTE) compound; it looks and feels like rubber but doesn't have the downsides associated with rubber.

Available in popular cut lengths complete with Vertex Coupling and Standard Adaptor ends, thereby saving you time and the need for expensive crimping equipment.

Just plug in and go.

FEATURES

Excellent abrasion resistance	Resistance to oil and fuels
Good flexibility and kink resistant	Silicone free
Working pressure: 300 lbf/in ² / 21 bar	Burst pressure: 63 bar
Temperature range: -10°C to 60°C	Fittings: Vertex Coupling & Standard Adaptor

Please note - an increase in temperature above 20°C will affect the working pressure quoted above

PART NUMBER	LENGTH (m)	INSIDE DIAMETER
-------------	------------	-----------------

HA2133	5	10 mm / 3/8 in
--------	---	----------------

HA2134	10	10 mm / 3/8 in
--------	----	----------------

HA2139	15	10 mm / 3/8 in
--------	----	----------------

HA2129	20	10 mm / 3/8 in
--------	----	----------------

PART NUMBER	LENGTH (m)	INSIDE DIAMETER
-------------	------------	-----------------

HA2135	5	8 mm / 5/16 in
--------	---	----------------

HA2125	10	8 mm / 5/16 in
--------	----	----------------

HA2137	15	8 mm / 5/16 in
--------	----	----------------

HA2138	20	8 mm / 5/16 in
--------	----	----------------

100 Series Coupling & Adaptor Air Tool Hose



PCL's air tool hose is a Rubber PVC Alloy (PTE) compound; it looks and feels like rubber but doesn't have the downsides associated with rubber.

Available in popular cut lengths complete with 100 Series Coupling and Adaptor ends, thereby saving you time and the need for expensive crimping equipment.

Just plug in and go.

FEATURES

Excellent abrasion resistance	Resistance to oil and fuels
Good flexibility and kink resistant	Silicone free
Working pressure: 300 lbf/in ² / 21 bar	Burst pressure: 63 bar
Temperature range: -10°C to 60°C	Fittings: 100 Series Coupling & Adaptor

Please note - an increase in temperature above 20°C will affect the working pressure quoted above

PART NUMBER	LENGTH (m)	INSIDE DIAMETER
-------------	------------	-----------------

HA2144	10	13 mm / 1/2 in
--------	----	----------------

HA2150	15	13 mm / 1/2 in
--------	----	----------------

HA2128	20	13 mm / 1/2 in
--------	----	----------------

HA2152	30	13 mm / 1/2 in
--------	----	----------------

For all air tool applications we recommend 10m hose.

PCL's air tool hose is a Rubber PVC Alloy (PTE) compound; it looks and feels like rubber but doesn't have the downsides associated with rubber.

Available in popular cut lengths complete with XF Coupling and Adaptor ends, thereby saving you time and the need for expensive crimping equipment.

Just plug in and go.

FEATURES

Excellent abrasion resistance	Resistance to oil and fuels
Good flexibility and kink resistant	Silicone free
Working pressure: 300 lbf/in ² / 21 bar	Burst pressure: 63 bar
Temperature range: -10°C to 60°C	Fittings: XF Coupling & Adaptor

Please note - an increase in temperature above 20°C will affect the working pressure quoted above

PART NUMBER	LENGTH (m)	INSIDE DIAMETER
HA2140	5	10 mm / 3/8 in
HA2141	10	10 mm / 3/8 in
HA2142	15	10 mm / 3/8 in
HA2143	20	10 mm / 3/8 in



Air Tool Whip Hoses

The vibrations caused in the use of air tools make a coupling connection subject to Health & Safety Regulations.

See ISO 4414:1998 and EN 983:1996 for safety requirements covering the installation and use of pneumatic equipment.

A Health and Safety Guide has been produced which covers the use of pneumatic equipment.

The Health & Safety Executive Guide HS(G) 39 states "requirements for quick acting couplings apply to most percussive and vibrating air tools, which may be fixed or hand held. If a quick acting coupling socket is fitted at the hose end adjacent to the tool, the plug should not be screwed directly into the inlet port but should be fitted onto a short isolation hose (0.5 m to 1.5 m long), thus isolating the plug and socket from the tool vibration."

The International Standard (ISO 6150:1998) recommends a minimum of 300 mm of flexible hose to be used between a vibrating tool and a quick acting coupling.

FEATURES

Working pressure @ 20°C: 300 lbf/in ² (21 bar)	Burst pressure: 63 bar
Temperature range: -10°C to 60°C	

PART NUMBER	LENGTH	INSIDE DIAMETER	FITTINGS
HA2108	0.6 m / 2 ft	7 mm / 1/4 in	Standard Adaptor & R 1/4 Male
HA2124N	0.6 m / 2 ft	7 mm / 1/4 in	Standard Adaptor & NPT 1/4 Male
HA2149	0.6 m / 2 ft	10 mm / 3/8 in	Standard Adaptor & R 1/4 Male
HA2109	0.6 m / 2 ft	10 mm / 3/8 in	Standard Adaptor & R 3/8 Male
HA2155	0.4 m / 16 in	8 mm / 5/16 in	Standard Adaptor & R 3/8 Male
HA2116	0.6 m / 2 ft	13 mm / 1/2 in	100 Series Adaptor & R 1/2 Male
HA2132	0.6 m / 2 ft	10 mm / 3/8 in	XF Adaptor & R 1/4 Male

Please note - an increase in temperature above 20°C will affect the working pressure quoted above



Polyurethane Coiled Air Hose Assemblies

Air Tools



PU Coiled Air Hose Assemblies overcome the limitations of nylon, such as kinking, abrasion and resistance to oils, and increases the effective working temperature range.

The use of PU allows use in any direction with the elimination of hose kinks aiding air flow. It also provides ease of use when attached to tools, helps protect tool ends and leaves the work area clear of entanglements and trip hazards. A range of hose sizes, working lengths and colour is available.

FEATURES

Polyurethane (PU) material	Hose recoils to a fraction of its working length
Nickel plated 360° swivel fittings	Range of hose sizes, working lengths and a choice of colour
200 mm straight ends with spring guard	Working pressure: 200 lbf/in ² / 14 bar



PART NUMBER	LENGTH (m)	INSIDE DIAMETER (mm)	OUTSIDE DIAMETER (mm)	FITTINGS	COLOUR
HA5209	2.5	6.5	10	R 1/4 Swivel Ends	Red
HA5211	5	6.5	10	R 1/4 Swivel Ends	Red
HA5213	7.5	6.5	10	R 1/4 Swivel Ends	Red
HA5216	7.5	8	12	R 1/4 Swivel Ends	Red
HA5218	10	8	12	R 1/4 Swivel Ends	Red
HA5220	10	10	15	R 3/8 Swivel Ends	Red

PART NUMBER	LENGTH (m)	INSIDE DIAMETER (mm)	OUTSIDE DIAMETER (mm)	FITTINGS	COLOUR
HA5210	2.5	6.5	10	R 1/4 Swivel Ends	Blue
HA5212	5	6.5	10	R 1/4 Swivel Ends	Blue
HA5214	7.5	6.5	10	R 1/4 Swivel Ends	Blue
HA5217	7.5	8	12	R 1/4 Swivel Ends	Blue
HA5219	10	8	12	R 1/4 Swivel Ends	Blue
HA5221	10	10	15	R 3/8 Swivel Ends	Blue

Air Tool Accessories

Nitrogen Inflation Equipment

Tyre Inflation Equipment

Tyre Care

Nylon Coiled Air Hose Assemblies



Nylon coiled air hose assemblies are manufactured from top quality nylon resin with nickel plated 360° swivel fittings.

FEATURES

Nylon material	200 mm straight ends with spring guard
Nickel plated 360° swivel ends	
Working pressure: 200 lbf/in ² / 14 bar	

PART NUMBER	LENGTH (m)	INSIDE DIAMETER (mm)	OUTSIDE DIAMETER (mm)	FITTINGS	COLOUR
HA5201	7.6 m / 25 ft	6	8	R 1/4 Swivel Ends	Red

Workshop Accessories

Hose

Hose Fittings

Couplings & Adaptors

It is designed specifically with that in mind, incorporating reinforced outer casing, double integral mounting brackets and full brass swivel sleeve and shaft for extra service life.



FEATURES

All fasteners are the latest design in threads for plastic	Large diameter inlet and tension side plates
A hi-low thread configuration allows the fasteners to be removed and refastened without stripping the plastic out	New ratchet tensioning system allows tension adjustment in the field
New inbuilt protected handle reduces the risk of damage in transit and adds strength to the outer case	Full flow swivels allows product delivery with no flow restrictions
Top and bottom wide space integral mounting bosses into the case gives extra mounting stability	Full brass swivel sleeve and shaft, double sealed for extra service life
Service pin locking port for total safety during all service work	All positional locking system 360° x 360° allows the reel to be mounted on walls, ceilings and pits

PART NUMBER	LENGTH (m)	INSIDE DIAMETER	WORKING PRESSURE	INLET SIZE	OUTLET SIZE
HRA3V01	20	10 mm / 3/8 in	250 lbf/in ² / 17 bar	Rp 3/8	Rp 3/8
HRA3J01	15	12 mm / 1/2 in	250 lbf/in ² / 17 bar	Rp 1/2	Rp 1/2

Also available: [HRA3MS](#) - Floor/Ceiling Bracket



(Shown fitted with HRA3MS)



Steel Hose Reel



The next level in industrial standard steel hose reels taken to another level, that we feel, makes it one of the best steel hose reels available in the global market today.

FEATURES

Industrial grade kink resistant hose
The guide and base are made from strengthened pressed steel

All steel components are coated with a corrosive resistant powder

PART NUMBER	LENGTH (m)	INSIDE DIAMETER	WORKING PRESSURE	INLET SIZE	OUTLET SIZE
HRA4U01	11	6 mm / 1/4 in	300 lbf/in ² / 21 bar	Rp 3/8	Rp 1/4
HRA4J01	15	10 mm / 3/8 in	300 lbf/in ² / 21 bar	Rp 3/8	Rp 3/8
HRA4J02	15	13 mm / 1/2 in	300 lbf/in ² / 21 bar	Rp 3/8	Rp 1/2

Workshop Hose Reel



This range of workshop hose reels are designed specifically with space saving in mind, whilst incorporating reinforced outer casing, double integral mounting brackets and full brass swivel sleeve and shaft for extra service life. The added benefit of being very compact means this reel is suitable for almost any application and space.

FEATURES

Ideal general purpose workshop hose reel
Wall, ceiling or pit mounted

Service pin locking port for total safety during all service work

PART NUMBER	LENGTH (m)	INSIDE DIAMETER	WORKING PRESSURE	INLET SIZE	OUTLET SIZE
HRA5J01	12	6 mm / 1/2 in	250 lbf/in ² / 17 bar	Rp 1/4	R 1/4
HRA5W01	12	8 mm / 5/16 in	250 lbf/in ² / 17 bar	Rp 3/8	R 3/8
HRA5F01	10	10 mm / 3/8 in	250 lbf/in ² / 17 bar	Rp 3/8	R 3/8

Economy Hose Reel



This multi purpose PVC hose reel is ideal for use with a multitude of applications where a wall or ceiling mounted reel is needed.

FEATURES

Quality PVC hose

Adjustable hose stopper

Wall or ceiling mounted

Retraction hose spreader - helps eliminate hose kinks and jams

PART NUMBER	LENGTH (m)	INSIDE DIAMETER	WORKING PRESSURE	INLET SIZE	OUTLET SIZE
HRA1B03	15	10 mm / 3/8 in	250 lbf/in ² / 17 bar	Rp 1/4	R 1/4

Bench Top Hose Reel



This reel is the next level in industrial standard PVC bench top reels, ideal for use over workbenches, around hoists and in more confined environments where robustness and reliability is essential.

FEATURES

Ideal for over workbenches, around hoists, smaller workshops and DIY applications

Leader hose pre-fitted

Steel mounting bracket pivot through 180°

Adjustable hose stopper

PART NUMBER	LENGTH (m)	INSIDE DIAMETER	WORKING PRESSURE	INLET SIZE	OUTLET SIZE
HRA2T	8	8 mm / 5/16 in	170 lbf/in ² / 12 bar	Rp 1/4	R 1/4

The Slow Retracting Hose Reel has bearings which slow hose retraction by up to 80%, the base speed never reaches above 2 metres per second, no damage is done and no personnel are injured. It is designed specifically with durability in mind, incorporating reinforced outer casing, double integral mounting brackets and full brass swivel sleeve and shaft for extra service life.

FEATURES

Adjustable guide arm to allow for wall, floor or ceiling mounting Adjustable base stopper

PART NUMBER	LENGTH (m)	INSIDE DIAMETER	WORKING PRESSURE	INLET SIZE	OUTLET SIZE
HRAGU01	10	6 mm	300 lbf/in ² / 21 bar	Rp 1/4	Rp 1/4



PCL couplings are built by hand and 100% individually tested for guaranteed reliability in our high-tech factory in Sheffield, utilising the very latest equipment.

The sleek silver couplings are manufactured using hardened steel to ensure extra durability, and coated with Trivalent chromates to produce a hard, corrosive and scratch-resistant finish.

This means that customers purchasing our renowned couplings will benefit from a highly advanced product which builds on our expert manufacturing process.

Our unique quick release couplings and adaptors were first made in the early 1940s when our factory was set up in Sheffield, and were first patented in 1944.

Today's range has developed into a world-leading collection of couplings designed for a variety of markets with common industry interchanges and Safety Couplings complementing the range.

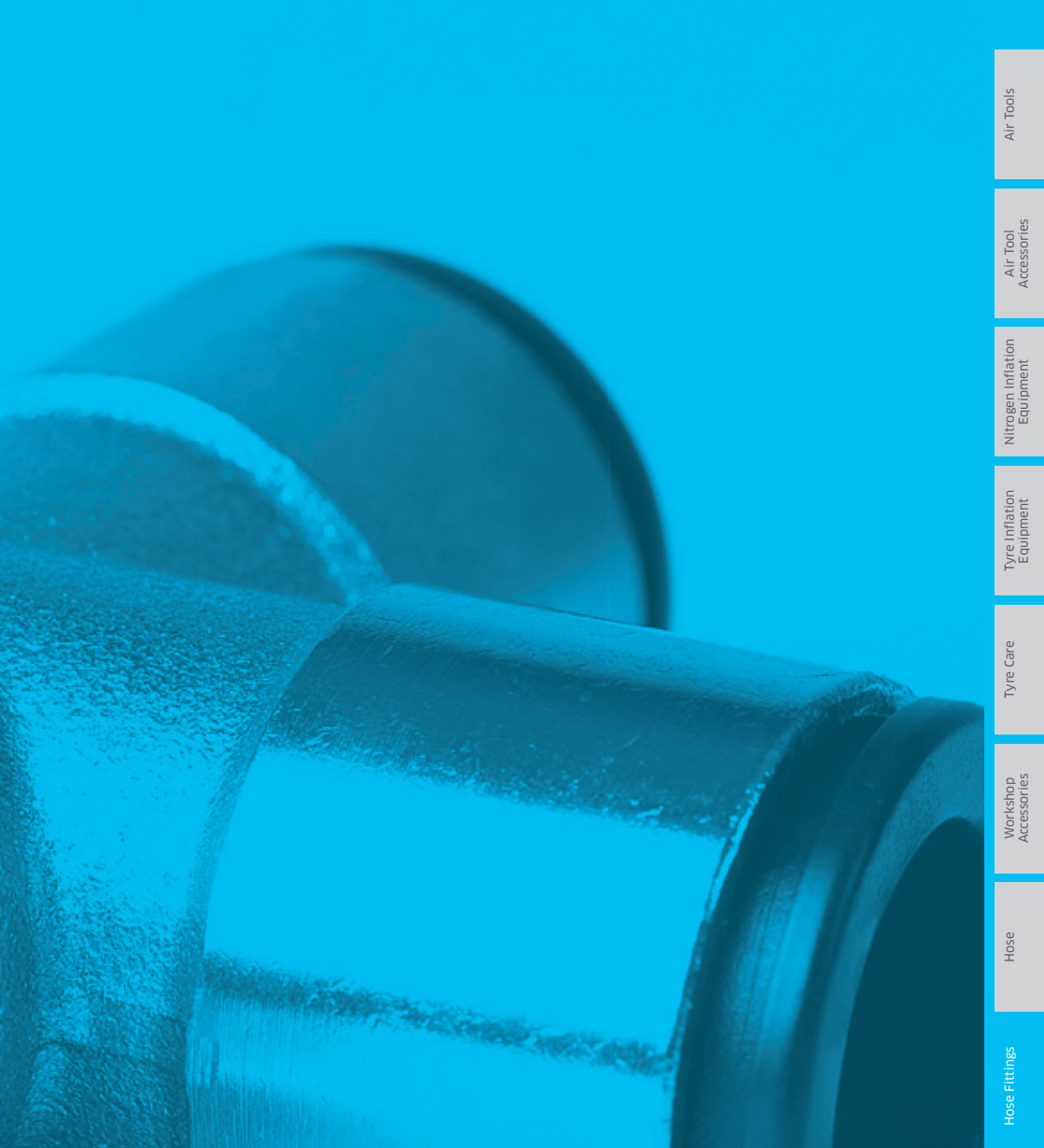
At PCL we are proud to display the city's prestigious mark of quality and excellence on our "Made in Sheffield" products, which promise to meet the requirements of relevant quality standards and stringent European and other market approvals.



Hose Fittings

To complement PCL's vast range of tyre inflation equipment and compressed air products, a wide variety of hose fittings are available for connecting your equipment to an existing air line or hose. A comprehensive range of BSP fittings including male and female adaptors are also available.





Hose Fittings

Hose

Workshop
Accessories

Tyre Care

Tyre Inflation
Equipment

Nitrogen Inflation
Equipment

Air Tool
Accessories

Air Tools

Hose Tail Adaptor



Connects hose to a female fitting.

PART NUMBER	INSIDE DIAMETER	MALE THREAD
HC1205	4.75 mm / 3/16 in	R 1/4
HC5656	6.35 mm / 1/4 in	R 1/4
HC1206	7.9 mm / 5/16 in	R 1/4
HC1217	9.5 mm / 3/8 in	R 1/4
HC2479	12.7 mm / 1/2 in	R 1/4
HC6904	6.35 mm / 1/4 in	R 3/8
HC6905	7.9 mm / 5/16 in	R 3/8
HC2951	9.5 mm / 3/8 in	R 3/8
HC2808	12.7 mm / 1/2 in	R 3/8
HC6908	9.5 mm / 3/8 in	R 1/2
HC2954	12.7 mm / 1/2 in	R 1/2
HC9336	6.35 mm / 1/4 in	1/4 NPT

Coned Tailpiece



Connects hose to a male fitting.

PART NUMBER	INSIDE DIAMETER	UNION NUT SIZE
HC5030	4.75 mm / 3/16 in	R 1/4
HC5275	6.35 mm / 1/4 in	R 1/4
HC5276	7.9 mm / 5/16 in	R 1/4
HC1225	9.5 mm / 3/8 in	R 1/4
HC2595	6.35 mm / 1/4 in	R 3/8
HC2594	7.9 mm / 5/16 in	R 3/8
HC2192	9.5 mm / 3/8 in	R 3/8

Union/Swivel Nut



Union/Swivel Nut for various connection types.

PART NUMBER	DESCRIPTION	FEMALE THREAD	SUITABLE FOR	CONED TAILPIECE PART NUMBER
HC5194	Union/Swivel Nut	Rp 1/4	4.75 mm / 3/16 in to 7.9 mm / 5/16 in	HC5030, HC5275, HC5276
HC1226	Union/Swivel Nut	Rp 1/4	9.5 mm / 3/8 in	HC1225
HC2181	Union/Swivel Nut	Rp 3/8	6.35 mm / 1/4 in to 9.5 mm / 3/8 in	HC2192, HC2594

Coned Tailpiece & Union Nut



FEATURES

Swivel nut and hose tail combinations Female swivel hose tail adaptors/connectors

PART NUMBER	INSIDE DIAMETER	FEMALE THREAD
HC5194 + HC5030	4.75 mm / 3/16 in	R 1/4
HC5275/5194	6.35 mm / 1/4 in	R 1/4
HC52776/5194	7.9 mm / 5/16 in	R 1/4
HC1226 + HC1225	9.5 mm / 3/8 in	R 1/4
HC2595/HC2181	6.35 mm / 1/4 in	R 3/8
HC2181 + HC2594	7.9 mm / 5/16 in	R 3/8
HC2192/2181	9.5 mm / 3/8 in	R 3/8

Increasing Bush

For connecting differing pipe diameters (male to female).

PART NUMBER	MALE THREAD	FEMALE THREAD
HC6475	R 1/4	R 3/8



Reducing Bush

For connecting differing pipe diameters.

PART NUMBER	THREAD TYPE	THREAD TYPE
HC6895	R 3/8 (male)	Rp 1/4 (female)
HC6896	R 1/2 (male)	Rp 1/4 (female)
HC6897	R 1/2 (male)	Rp 3/8 (female)
HC6892	Rp 3/8 (female)	Rp 1/4 (female)
HC6893	Rp 1/2 (female)	Rp 1/4 (female)



Double Union

For connecting fittings (male to male).

PART NUMBER	MALE THREAD
HC6560	R 1/4
HC4281	R 3/8
HC6898	R 1/2



Reducing Union

For connecting fittings.

PART NUMBER	MALE THREAD	MALE THREAD
HC6899	R 3/8	Rp 1/4
HC6900	R 1/2	Rp 1/4
HC6901	R 1/2	Rp 3/8



Hose Connector/Repairer

For connecting or repairing hose sections.

PART NUMBER	INSIDE DIAMETER
HC2983	6.35 mm / 1/4 in
HC2984	7.9 mm / 5/16 in
HC2985	9.5 mm / 3/8 in
HC2986	12.7 mm / 1/2 in



Flexible Elbow

A flexible connection used to eliminate hose kinks.

PART NUMBER	WORKING PRESSURE	MALE THREAD	FEMALE THREAD
FE101	140 lbf/in ² / 10 bar	R 1/4	Rp 1/4



NPT Thread Converter



Specially designed to allow PCL couplings and adaptors to be fitted to 1/4 NPT threads.

PART NUMBER	DESCRIPTION	MALE THREAD	FEMALE THREAD
HC9560	1/4 NPT Converter	1/4 NPT	Rp 1/4
HC9573	1/4 NPT Converter	R 1/4	1/4 NPT

PART NUMBER	DESCRIPTION	INSIDE DIAMETER	MALE THREAD
HC9336	Hose Tail Adaptor	6.35 mm / 1/4 in	1/4 NPT

Parallel Socket



For straight female to female connections.

PART NUMBER	FEMALE THREAD	FEMALE THREAD
HC6889	Rp 1/4	Rp 1/4
HC2543-3/8	Rp 3/8	Rp 3/8
HC2543-1/2	Rp 1/2	Rp 1/2

Y Piece Connector



For splitting a single connection into two.

PART NUMBER	FEMALE THREAD
SPR4279	Rp 1/4
SPR4280	Rp 3/8
HC2043-1/2	Rp 1/2

Fixed Female Elbow



This range of BSP adaptors and hose tails are designed to assist with the assembly of fluid power components and systems.

FEATURES	
For 90° female to female connections	Nickel plated brass

PART NUMBER	FEMALE THREAD
HC2013-1/4	G3/8
HC2013-3/8	G1/4
HC2013-1/2	G1/2

Equal Female Tee



This range of BSP adaptors and hose tails are designed to assist with the assembly of fluid power components and systems.

FEATURES	
For equal Tee female connections	Nickel plated brass

PART NUMBER	FEMALE THREAD
HC2003-1/4	Rp 1/2
HC2003-3/8	Rp 3/8
HC2003-1/2	Rp 1/4

Jubilee® are the leading brand of worm drive hose clips.

SPECIFICATIONS - MILD STEEL ZINC PLATED

Band: BS1449 Pt. 1

Housing: BS1449 Pt. 1

Screw: BS3111

Zinc finish: Meets BS7479 48 Hrs NSS

SPECIFICATIONS - TYPE 304 STAINLESS STEEL

All components: Type 304 BS1449 Pt. 2 and DIN 1.4301 A2



PART NUMBER

MILD STEEL ZINC PLATED	TYPE 304 STAINLESS STEEL	SIZE	BS NUMBER	ADJUSTMENT (mm)	BOX QUANTITY
JC9512	JC9512/ST	000	12	9.5 - 12	10
JC1116	JC1116/ST	M00	16	11 - 16	10
JC1320	JC1320/ST	00	20	13 - 20	10
JC1622	JC1622/ST	0	22	16 - 22	10
JC1825	JC1825/ST	0X	25	18 - 25	10
JC2230	JC2230/ST	1A	30	22 - 30	10
JC2535	JC2535/ST	1	35	25 - 35	10
JC3040	JC3040/ST	1X	40	30 - 40	10
JC3245	JC3245/ST	1M	45	32 - 45	10
JC3550	JC3550/ST	2A	50	35 - 50	10
JC4055	JC4055/ST	2	55	40 - 55	10
JC4560	JC4560/ST	2X	60	45 - 60	10
JC5570	JC5570/ST	3	70	55 - 70	10
JC6080	JC6080/ST	3X	80	60 - 80	1
JC7090	JC7090/ST	4	90	70 - 90	1
JC85100	JC85100/ST	4X	100	85 - 100	1
JC90120	JC90120/ST	5	120	90 - 120	1
JC110140	JC110140/ST	6	140	110 - 140	1
JC120150	JC120150/ST	6X	150	120 - 150	1
JC135165	JC135165/ST	7	165	135 - 165	1
JC158190	JC158190/ST	7.5	190	158 - 190	1
JC184216	JC184216/ST	8.5	216	184 - 216	1
JC210242	JC210242/ST	9.5	242	210 - 242	1
JC235267	JC235267/ST	10.5	267	235 - 267	1
JC260292	JC260292/ST	11.5	292	260 - 292	1
JC286318	JC286318/ST	12.5	318	286 - 318	1



Jubilee® Clip Dispenser

The improved CD100 offers the ultimate point of sale Jubilee® Hose clip dispenser. The unit can be wall-hung or left free-standing. Eye catching and functional, your stock turn is bound to significantly improve.

FEATURES

Increases sales of Jubilee® clips with point of sale display

Keeps stock tidy and ready for sale

PART NUMBER	DIMENSIONS (mm)	CLIP MATERIAL	CONTENTS
CD100SS	340h X 330w X 180d	Stainless Steel	x10: 000, M00,00,0, 0X, 1A, 1, 1X, 1M & 2A x1: Jubilee Flexidriver®
CD100	340h X 330w X 180d	Mild Steel Zinc Plated	x10: 000, M00,00,0, 0X, 1A, 1, 1X, 1M & 2A x1: Jubilee Flexidriver®



Air Tools

Air Tool Accessories

Nitrogen Inflation Equipment

Tyre Inflation Equipment

Tyre Care

Workshop Accessories

Hose

Hose Fittings

Couplings & Adaptors

Jubilee® 'O' Clips

Air Tools



2-ear clamps are ideal where the requirement is for a neat finish with no bulky housing to catch on obstructions. Pincers are used to crimp the ears of the clamps and provide a secure seal.

PART NUMBER	SIZE	CLAMPING RANGE (mm)	BAG QUANTITY
OC3141	0041	3.1 - 4.1	50
OC3545	0045	3.5 - 4.5	50
OC0305	0305	3 - 5	50
OC0507	0507	5 - 7	50
OC0709	0709	7 - 9	50
OC0811	0811	8 - 11	50
OC0911	0911	9 - 11	50
OC1113	1113	11 - 13	50
OC1315	1315	13 - 15	50
OC1517	1517	15 - 17	50
OC1518	1518	15 - 18	50
OC1619	1619	16 - 19	50
OC1720	1720	17 - 20	50
OC1922	1922	19 - 22	50
OC2023	2023	20 - 23	50
OC2225	2225	22 - 25	25
OC2327	2327	23 - 27	25
OC2528	2528	25 - 28	25
OC2731	2731	27 - 31	25
OC2831	2831	28 - 31	25
OC3134	3134	31 - 34	25
OC3437	3437	34 - 37	25
OC3740	3740	37 - 40	25
OC4043	4043	40 - 43	25
OC4346	4346	43 - 46	25

Air Tool Accessories

Nitrogen Inflation Equipment

Tyre Inflation Equipment

Tyre Care



Workshop Accessories

Jubilee Flexidriver® / Jubilee Clipdriver®



Rapid easy adjustment of Jubilee® Clips is made possible with the Jubilee Flexidriver® and Jubilee Clipdriver®

FEATURES

Clipdrivers available in 2 rigid shaft lengths Flexidriver has a flexible shaft

PART NUMBER

DESCRIPTION

FDR1	Jubilee Flexidriver®
CDR95	95 mm Jubilee Clipdriver®
CDR160	160 mm Jubilee Clipdriver®

Hose



Hose Fittings

Jubilee® Normal Closing 'O' Clip Pincer



For easy crimping and to obtain a proper seal of Jubilee® 'O' Clips (two ear clamps), use the effective Normal Closing Pincer.

FEATURES

Specially designed high precision tool Enables efficient, rapid and easy fitting of 'O' clips

PART NUMBER

DESCRIPTION

CPR01	Jubilee® Normal Closing 'O' Clip Pincer
-------	---



Couplings & Adaptors

Jubilee® Smart Dispenser

This new versatile and convenient dispenser dispenses Jubilee® Hose Clips in boxes of ten and singly and also carries the extremely useful Jubilee Flexidriver® tool for easy adjustment of Jubilee® Hose Clips.

PART NUMBER	DIMENSIONS (mm)	CLIP MATERIAL	CONTENTS
CD540	380h X 580w X 250d	Mild Steel Zinc Plated	x60: 000, M00 & 00 x50: 0, 1 & 1X x40: 1A, 1M, 2A & 2 x2: Jubilee Flexidriver®



Air Tools

Air Tool Accessories

Nitrogen Inflation Equipment

Tyre Inflation Equipment

Tyre Care

Workshop Accessories

Hose

Hose Fittings

Couplings & Adaptors

Jubilee® Handy Pack

Increases sales of Jubilee® Hose clips with an attractive point of sale display. The hugely successful Handy Pack can be used as a point of sale dispenser, stores assortment pack or a mobile stock pack.

FEATURES

Handy pack holds most popular sizes of clips All individually boxed and packed in outer display carton

PART NUMBER	DIMENSIONS (mm)	CLIP MATERIAL	CONTENTS
HP100	270h X 310w X 262d	Mild Steel Zinc Plated	x10: 000, M00, 00, 0, OX, 1A, 1, 1X, 1M & 2A



Jubilee® Workshop Pack

143 assorted Jubilee Clips from 9.5 mm to 40 mm in a plastic reusable box.

PART NUMBER	DIMENSIONS (mm)	CLIP MATERIAL	CONTENTS
WP143	55h X 330w X 250d	Mild Steel Zinc Plated	x32: M00 x28: 00 x24: 000 x14: OX x13: 0 x13: 1 x12: 1A x7: 1X



Jubilee® 'O' Clip Kits

The 'O' clip kit from Jubilee® is a versatile and convenient dispenser for the most popular sizes of double ear clips. The kit comes complete with/without normal closing pincers and is ideal for the user who needs to have a selection of different size clips available when on the move.

FEATURES

Contains the most popular sizes of 2-ear clips Kit comes complete with or without normal closing pincer

PART NUMBER	DIMENSIONS (mm)	CLIP MATERIAL	CONTENTS
OX175	40h X 270w X 175d	Mild Steel Zinc Plated, clear passivated	x20: 0507, 0709, 0811, 0911, 1113, 1315, 1517, 1518 & 1720
OX175P	40h X 270w X 175d	Mild Steel Zinc Plated, clear passivated	As above plus x1: Jubilee® Normal Closing 'O' Clip Pincer



Male Stud



Straight conical male connector.

FEATURES

Nickel-plated brass 58

Maximum working pressure: 16 bar

Temperature range: -20°C to 80°C

PART NUMBER	TUBE EXTERNAL DIAMETER (mm)	CONNECTION
PMSO4M5	4	M5
PMS401	4	1/8 in
PMS402	4	1/4 in
PMS601	6	1/8 in
PMS602	6	1/4 in
PMS801	8	1/8 in
PMS802	8	1/4 in
PMS803	8	3/8 in
PMS1002	10	1/4 in
PMS1003	10	3/8 in
PMS1004	10	1/2 in
PMS1202	12	1/4 in
PMS1203	12	3/8 in
PMS1204	12	1/2 in

Equal Tube Elbow



Intermediate elbow connector.

FEATURES

Nickel-plated brass 58

Maximum working pressure: 16 bar

Temperature range: -20°C to 80°C

PART NUMBER	TUBE EXTERNAL DIAMETER (mm)
PEE4	4
PEE6	6
PEE8	8
PEE10	10
PEE12	12

Swivel Elbow



Swivel/conical male elbow connector.

FEATURES

Nickel-plated brass 58

Maximum working pressure: 16 bar

Temperature range: -20°C to 80°C

PART NUMBER	TUBE EXTERNAL DIAMETER (mm)	CONNECTION (in)
PSE401	4	1/8
PSE402	4	1/4
PSE601	6	1/8
PSE602	6	1/4
PSE801	8	1/8
PSE802	8	1/4
PSE803	8	3/8
PSE1002	10	1/4
PSE1003	10	3/8
PSE1004	10	1/2
PSE1202	12	1/4
PSE1203	12	3/8
PSE1204	12	1/2

Equal Tube Tee

Intermediate 'T' connector.

FEATURES

Nickel-plated brass 58 Maximum working pressure: 16 bar
 Temperature range: -20°C to 80°C

PART NUMBER	TUBE EXTERNAL DIAMETER (mm)
PET4	4
PET6	6
PET8	8
PET10	10
PET12	12



Tube Stem Reducer

Intermediate tube to stem reducer.

FEATURES

Nickel-plated brass 58 Maximum working pressure: 16 bar
 Temperature range: -20°C to 80°C

PART NUMBER	TUBE EXTERNAL DIAMETER (mm)	STEM DIAMETER (mm)
PSR46	4	6
PSR48	4	8
PSR68	6	8
PSR610	6	10
PSR612	6	12
PSR810	8	10
PSR812	8	12
PSR1012	10	12



Nylon Tubing

Manufactured from high quality nylon granules. This tubing is ideally suited for use with push-in fittings and for a wide range of industrial applications, including: compressed air, lubrication, refrigeration, air conditioning, coolant lines, fuels and oils.

Supplied in 30 m coils.

FEATURES

Available in 3 colours: Natural, Black and Blue

PART NUMBER	INSIDE DIAMETER (mm)	OUTSIDE DIAMETER (mm)	WORKING PRESSURE	BEND RADIUS (mm)	TEMPERATURE RANGE
TRN-6/4-*	4	6	350 lbf/in ² (24 bar)	35	-35°C to 70°C
TRN-10/8-*	8	10	200 lbf/in ² (14 bar)	100	-35°C to 70°C
TRN-4/2.5-*	2.5	4	400 lbf/in ² (27 bar)	16	-35°C to 70°C
TRN-12/10-*	10	12	160 lbf/in ² (11 bar)	125	-35°C to 70°C
TRN-8/6-*	6	8	255 lbf/in ² (17 bar)	60	-35°C to 70°C

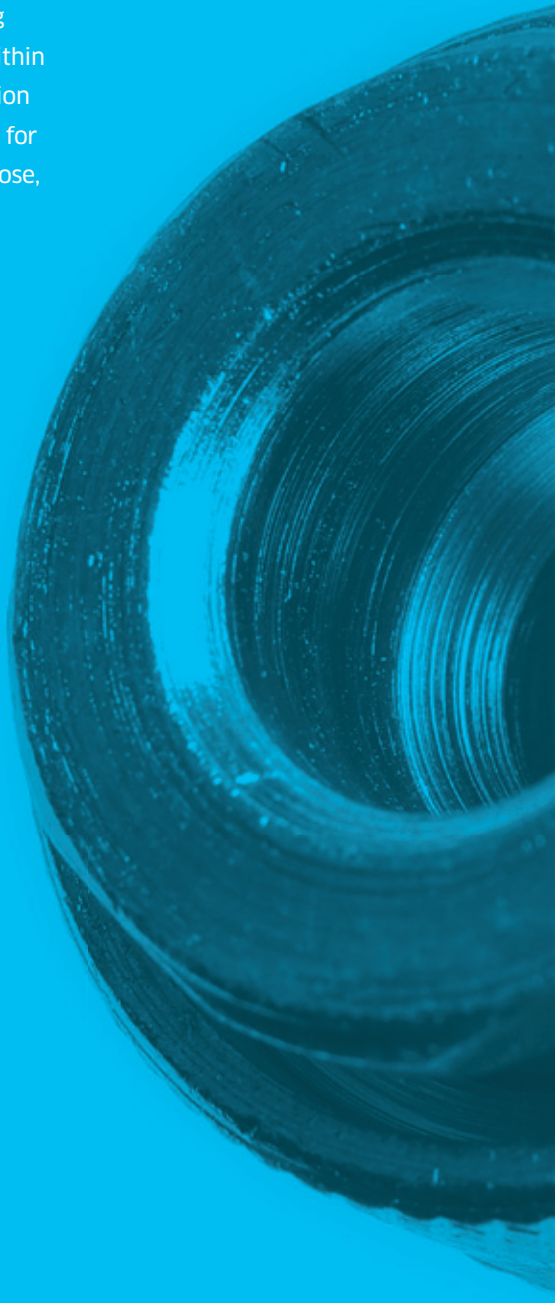


When ordering, replace * in the part number with your colour choice. If no colour choice is specified Natural will be supplied as standard

Please note - values stated are based on the short term burst pressure of nylon at 20°C using a 4:1 safety factor

Couplings and Adaptors

PCL has been designing and manufacturing couplings & adaptors for over 60 years. Within this section you will find the largest selection available, from the standard Airflow range for fixed applications and Vertex for trailing hose, to the common industry interchanges and safety couplings.





Couplings &
Adaptors

Hose Fittings

Hose

Workshop
Accessories

Tyre Care

Tyre Inflation
Equipment

Nitrogen Inflation
Equipment

Air Tool
Accessories

Air Tools

Airflow Couplings

Air Tools



The Airflow is the original quick-release coupling with over 50 years of design enhancements, and is manufactured in the UK to the highest standards.

FEATURES

Single action	Stainless springs and balls
Steel construction	Corrosive resistant finish
Robust and hardwearing – ideal for use in the engineering/workshop environment	Designed for fixed applications
Nominal bore: 4.8 mm	Flow rate @ 6 bar (0.5 bar p.d.): 43 cfm @ 100 psi
Maximum working pressure: 14 bar / 200 psi	Temperature range: -40°C to 100°C

PART NUMBER	THREAD TYPE	THREAD SIZE	INTERCHANGEABLE
AC21CM	Male	R 1/4	Cejn 295 Rectus 19
AC21EM	Male	R 3/8	
AC21JM	Male	R 1/2	
AC21CF	Female	Rp 1/4	
AC21EF	Female	Rp 3/8	
AC21JF	Female	Rp 1/2	
AC21R	Hose Tailpiece	7 mm / 1/4 in	
AC21S	Hose Tailpiece	8 mm / 5/16 in	
AC21T	Hose Tailpiece	10 mm / 3/8 in	
AC6103	Twin Coupling	-	

Suitable for use with: [Standard Adaptors](#)

Air Tool Accessories

Nitrogen Inflation Equipment

Tyre Inflation Equipment

Tyre Care

Vertex Couplings



Designed and manufactured in Sheffield by PCL, these quick release couplings have a double action feature which makes them ideal for trailing hose applications in garage and tyreshop environments (e.g. portable air tools and PCL hand held tyre inflation equipment).

FEATURES

Double action	Protective shoulder helps to prevent dirt penetration
Steel construction	Designed for trailing hose applications
Corrosive resistant finish	
Nominal bore: 4.8 mm	Flow rate @ 6 bar (0.5 bar p.d.): 43 cfm @ 100 psi
Maximum working pressure: 14 bar / 200 psi	Temperature range: -40°C to 100°C

PART NUMBER	THREAD TYPE	THREAD SIZE	INTERCHANGEABLE
AC91CM	Male	R 1/4	Cejn 295 Rectus 19
AC91EM	Male	R 3/8	
AC91JM	Male	R 1/2	
AC91CF	Female	Rp 1/4	
AC91EF	Female	Rp 3/8	
AC91JF	Female	Rp 1/2	
AC91R	Hose Tailpiece	7 mm / 1/4 in	
AC91S	Hose Tailpiece	8 mm / 5/16 in	
AC91T	Hose Tailpiece	10 mm / 3/8 in	
AC6503	Twin Coupling	-	

Suitable for use with: [Standard Adaptors](#)

Workshop Accessories

Hose

Hose Fittings

Couplings & Adaptors

Taking PCL's industry-proven, quick-release Airflow coupling to the next level; Safeflow offers a two-stage self-venting release – totally eliminating the dangers of hose whip.

FEATURES

Two-stage self venting release	Compatible with genuine PCL standard adaptors
Genuine PCL product, designed and manufactured in Sheffield, England	Conforms to safety standards ISO 4414:1998 & EN 983:1996
Nominal bore: 4.8 mm	Flow rate @ 6 bar (0.5 bar p.d.): 43 cfm @ 100 psi
Maximum working pressure: 14 bar / 200 psi	Temperature range: -40°C to 100°C

PART NUMBER	THREAD TYPE	THREAD SIZE	INTERCHANGEABLE
SC21CM	Male	R 1/4	Cejn 295 Rectus 19
SC21EM	Male	R 3/8	
SC21JM	Male	R 1/2	
SC21CF	Female	Rp 1/4	
SC21EF	Female	Rp 3/8	
SC21JF	Female	Rp 1/2	
SC21R	Hose Tailpiece	7 mm / 1/4 in	
SC21S	Hose Tailpiece	8 mm / 5/16 in	
SC21T	Hose Tailpiece	10 mm / 3/8 in	

Suitable for use with: [Standard Adaptors](#)



Standard Adaptors

The PCL Standard Air Line Adaptor is suitable for most compressed air applications. Designed and manufactured alongside PCL couplings, this range of adaptors has become the benchmark in the UK for quality and reliability.

FEATURES

Suitable for most workshop compressed air applications	Hardened steel construction with corrosive resistant finish
Benchmark in the UK for quality and reliability	Genuine PCL product, designed and manufactured in Sheffield, England
Nominal bore: 4.8 mm	Flow rate @ 6 bar (0.5 bar p.d.): 43 cfm @ 100 psi
Maximum working pressure: 14 bar / 200 psi	Temperature range: -40°C to 100°C

PART NUMBER	THREAD TYPE	THREAD SIZE	INTERCHANGEABLE
ACA2593	Male	R 1/4	Cejn 295 Rectus 19
ACA6909	Male	R 3/8	
ACA6584	Male	R 1/2	
ACA2746	Female	Rp 1/4	
ACA6582	Female	Rp 3/8	
ACA6583	Female	Rp 1/2	
ACA2486	Hose Tailpiece	4.75 mm / 3/16 in	
ACA1793	Hose Tailpiece	6.35 mm / 1/4 in	
ACA2487	Hose Tailpiece	7.9 mm / 5/16 in	
ACA2488	Hose Tailpiece	9.5 mm / 3/8 in	
ACA9438	Hose Tailpiece	13 mm / 1/2 in	

Suitable for use with: [Airflow](#), [Vertex](#), [Safeflow](#) and [Non-Corrosible Couplings](#)



Non-Corroddible Couplings



Designed and manufactured by PCL for specialist applications such as breathing air, non-spark, damp or high condensation environments.

FEATURES

All brass body and valve with phosphor bronze balls	For use in breathing air applications, non spark, damp or high condensation environments
Positive locking mechanism	
Nominal bore: 4.8 mm	Flow rate @ 6 bar (0.5 bar p.d.): 43 cfm @ 100 psi
Maximum working pressure: 14 bar / 200 psi	Temperature range: -40°C to 100°C

PART NUMBER	THREAD TYPE	THREAD SIZE	INTERCHANGEABLE
AC32CM	Male	R 1/4	Cejn 295 Rectus 19
AC32CF	Female	Rp 1/4	

Suitable for use with: [Standard Adaptors](#)

InstantAir Couplings



Bayonet type range, positive seal, quick acting couplings designed for maximum efficiency and to prevent accidental uncoupling manufactured by PCL in Sheffield.

FEATURES

Bayonet type couplings	Zinc plated steel
High temperature versions also available	
Nominal bore: 5.6 mm	Flow rate @ 6 bar (0.5 bar p.d.): 54 cfm @ 100 psi
Maximum working pressure: 17 bar / 250 psi	Temperature range: -20°C to 80°C

PART NUMBER	BROOMWADE REFERENCE	THREAD TYPE	THREAD SIZE
AC51CM	PT8825	Male	G 1/4
AC51EM	PT8827	Male	G 3/8
AC51JM	PT9095	Male	R 1/2
AC51CF	PT8823	Female	Rp 1/4
AC51EF	PT8800	Female	Rp 3/8
AC51JF	PT9096	Female	Rp 1/2
AC51R	PT8800/SU4	Hose Tailpiece	6.35 mm / 1/4 in
AC51S	PT8800/SU5	Hose Tailpiece	7.9 mm / 5/16 in
AC51T	PT8800/SU6	Hose Tailpiece	9.5 mm / 3/8 in

Suitable for use with: [InstantAir Adaptors](#)

InstantAir Adaptors



The Broomwade InstantAir coupling business was acquired by PCL in 2001 and these couplings and adaptors are now manufactured to the same quality and standard in Sheffield by PCL.

FEATURES

Bayonet type adaptors	Zinc plated steel
Nominal bore: 5.6 mm	Flow rate @ 6 bar (0.5 bar p.d.): 54 cfm @ 100 psi
Maximum working pressure: 17 bar / 250 psi	Temperature range: -20°C to 80°C

PART NUMBER	BROOMWADE REFERENCE	THREAD TYPE	THREAD SIZE
AA5102	PT8808	Male	G 1/4
AA5103	PT8817	Male	G 3/8
AA5106	PT8806	Female	Rp 1/4
AA5107	PT8802	Female	Rp 3/8
AA5110	PT8802/SU4	Hose Tailpiece	6.35 mm / 1/4 in
AA5111	PT8802/SU5	Hose Tailpiece	7.9 mm / 5/16 in
AA5112	PT8802/SU6	Hose Tailpiece	9.5 mm / 3/8 in

Suitable for use with: [InstantAir Couplings](#)

100 Series Couplings

Designed and manufactured in Sheffield by PCL this traditional PCL coupling range offers greater airflow characteristics for the larger air tool applications in garage and tyre shop environments.

FEATURES

Hardened shoulder helps prevent accidental disconnection	Secure locking device
Specially designed valves and large aperture provides optimum air flow	
Nominal bore: 10.3 mm	Flow rate @ 6 bar (0.5 bar p.d.): 117 cfm @ 100 psi
Maximum working pressure: 14 bar / 200 psi	Temperature range: -40°C to 100°C

PART NUMBER	THREAD TYPE	THREAD SIZE
AC5EM	Male	R 3/8
AC5JM	Male	R 1/2
AC5EF	Female	Rp 3/8
AC5JF	Female	Rp 1/2

Suitable for use with: [100 Series Adaptors](#)



100 Series Adaptors

Designed and manufactured in Sheffield by PCL this traditional PCL coupling range offers greater airflow characteristics for the larger air tool applications in garage and tyre shop environments.

FEATURES

Corrosive resistant finish	Case hardened for longer life
Nominal bore: 10.3 mm	Flow rate @ 6 bar (0.5 bar p.d.): 117 cfm @ 100 psi
Maximum working pressure: 14 bar / 200 psi	Temperature range: -40°C to 100°C

PART NUMBER	THREAD TYPE	THREAD SIZE
ACA2999	Male	R 3/8
ACA3035	Male	R 1/2
ACA2994	Female	Rp 3/8
ACA3037	Hose Tailpiece	9.5 mm / 3/8 in
ACA3036	Hose Tailpiece	12.7 mm / 1/2 in

Suitable for use with: [100 Series Couplings](#)



Air Tools

Air Tool Accessories

Nitrogen Inflation Equipment

Tyre Inflation Equipment

Tyre Care

Workshop Accessories

Hose

Hose Fittings

Couplings & Adaptors

60 Series Couplings



Designed and manufactured in Sheffield by PCL this traditional PCL coupling range offers greater airflow characteristics for the larger air tool applications in garage and tyre shop environments.

FEATURES

Hardened shoulder helps prevent accidental disconnection

Secure locking device

Specially designed valves and large aperture provides optimum air flow

Nominal bore: 7.1 mm

Flow rate @ 6 bar (0.5 bar p.d.): 60 cfm @ 100 psi

Maximum working pressure: 14 bar / 200 psi

Temperature range: -40°C to 100°C

PART NUMBER	THREAD TYPE	THREAD SIZE
AC4CM	Male	R 1/4
AC4EM	Male	R 3/8
AC4JM	Male	R 1/2
AC4CF	Female	Rp 1/4
AC4EF	Female	Rp 3/8
AC4JF	Female	Rp 1/2

Suitable for use with: [60 Series Adaptors](#)

60 Series Adaptors



Designed and manufactured in Sheffield by PCL this traditional PCL coupling range offers greater airflow characteristics for the larger air tool applications in garage and tyre shop environments.

FEATURES

Corrosive resistant finish

Case hardened for longer life

Nominal bore: 7.1 mm

Flow rate @ 6 bar (0.5 bar p.d.): 60 cfm @ 100 psi

Maximum working pressure: 14 bar / 200 psi

Temperature range: -40°C to 100°C

PART NUMBER	THREAD TYPE	THREAD SIZE
ACA2657	Male	R 1/4
ACA2661	Male	R 3/8
ACA2653	Female	Rp 1/4
ACA2660	Female	Rp 3/8
ACA2654	Hose Tailpiece	7.9 mm / 5/16 in
ACA2658	Hose Tailpiece	9.5 mm / 3/8 in
ACA2659	Hose Tailpiece	12.7 mm / 1/2 in

Suitable for use with: [60 Series Couplings](#)

Offers excellent flow characteristics providing the workshop with increased airflow when required and enhanced tool efficiency.

FEATURES

High flow rate - 130 cfm @ 100 psi	Hardened steel construction with corrosive resistant finish
Steel shoulder helps prevent accidental disconnection	Enhances tool efficiency
Nominal bore: 7.4 mm	Flow rate @ 6 bar (0.5 bar p.d.): 2,200 l/min
Maximum working pressure: 35 bar / 508 psi	Temperature range: -40°C to 100°C

PART NUMBER	THREAD TYPE	THREAD SIZE	INTERCHANGEABLE
AC71CM	Male	R 1/4	Cejn 320 Legris 25/26
AC71EM	Male	R 3/8	Norgren 234/238 Rectus 25/26
AC71JM	Male	R 1/2	Schrader InterCheck 35
AC71CF	Female	Rp 1/4	
AC71EF	Female	Rp 3/8	
AC71JF	Female	Rp 1/2	
AC7106	Hose Tailpiece	6 mm	
AC7108	Hose Tailpiece	8 mm	
AC7109	Hose Tailpiece	9 mm	
AC7110	Hose Tailpiece	10 mm	
AC7113	Hose Tailpiece	13 mm	

Suitable for use with: [XF Adaptors](#)



Offers excellent flow characteristics providing the workshop with increased airflow when required and enhanced tool efficiency.

FEATURES

Corrosive resistant finish	Case hardened for longer life
Nominal bore: 7.4 mm	Flow rate @ 6 bar (0.5 bar p.d.): 2,200 l/min
Maximum working pressure: 35 bar / 508 psi	Temperature range: -40°C to 100°C

PART NUMBER	THREAD TYPE	THREAD SIZE	INTERCHANGEABLE
AA7101	Male	R 1/8	Cejn 320 Legris 25/26
AA7102	Male	R 1/4	Norgren 234/238 Rectus 25/26
AA7103	Male	R 3/8	Schrader InterCheck 35
AA7104	Male	R 1/2	
AA7105	Female	Rp 1/8	
AA7106	Female	Rp 1/4	
AA7107	Female	Rp 3/8	
AA7108	Female	RP 1/2	
AA7109	Hose Tailpiece	4 mm	
AA7110	Hose Tailpiece	6 mm	
AA7111	Hose Tailpiece	8 mm	
AA7114	Hose Tailpiece	9 mm	
AA7112	Hose Tailpiece	10 mm	
AA7113	Hose Tailpiece	13 mm	

Suitable for use with: [XF Couplings](#)



Mini Couplings



For use in light engineering environments, this range of small-bore couplings has proved popular in the robotics, medical, instrumentation and automation industries.

FEATURES

Manufactured in brass with chrome plate finish Lightweight and compact design

Single action/one handed operation

Nominal bore: 5.0 mm

Flow rate @ 6 bar (0.5 bar p.d.): 560 l/min

Maximum working pressure: 35 bar / 508 psi

Temperature range: -20°C to 80°C

PART NUMBER	THREAD TYPE	THREAD SIZE	INTERCHANGEABLE
AC11AM	Male	G 1/8	Camozzi Mini
AC11CM	Male	G 1/4	Cejn 50
AC11BHAM	Male Bulkhead Fixing	G 1/8	Legris 21
AC11BHCM	Male Bulkhead Fixing	G 1/4	Norgren 233
AC11AF	Female	G 1/8	Rectus 21
AC11CF	Female	G 1/4	Schrader Mini
AC11RF6/4	Tube Connector	6 mm outside diameter - 4 mm inside diameter	
AC11RF8/6	Tube Connector	8 mm outside diameter - 6 mm inside diameter	
AC11BH6/4	Tube Connector Bulkhead Fixing	6 mm outside diameter - 4 mm inside diameter	
AC11BH8/6	Tube Connector Bulkhead Fixing	8 mm outside diameter - 6 mm inside diameter	
AC1106	Hose Tailpiece	6 mm	
AC1108	Hose Tailpiece	8 mm	
AC1109	Hose Tailpiece	9 mm	
AC11AK6/4	Tube Connector Anti-kink	6 mm outside diameter - 4 mm inside diameter	
AC11AK8/6	Tube Connector Anti-kink	8 mm outside diameter - 6 mm inside diameter	

Suitable for use with: [Mini Adaptors](#)

Mini Adaptors



For use in light engineering environments, this range of small-bore adaptors has proved popular in the robotics, medical, instrumentation and automation industries.

FEATURES

Manufactured in brass with chrome plate finish Corrosive resistant finish

Nominal bore: 5.0 mm

Flow rate @ 6 bar (0.5 bar p.d.): 560 l/min

Maximum working pressure: 35 bar / 508 psi

Temperature range: -20°C to 80°C

PART NUMBER	THREAD TYPE	THREAD SIZE	INTERCHANGEABLE
AA11AM	Male	G 1/8	Camozzi Mini
AA11CM	Male	G 1/4	Cejn 50
AA11AF	Female	G 1/8	Norgren 233
AA11CF	Female	G 1/4	Rectus 21
AA11RF6/4	Tube Connector	6 mm outside diameter - 4 mm inside diameter	Schrader Mini
AA11RF8/6	Tube Connector	8 mm outside diameter - 6 mm inside diameter	
AA1104	Hose Tailpiece	4 mm	
AA1106	Hose Tailpiece	6 mm	
AA1109	Hose Tailpiece	9 mm	
AA11AK6/4	Tube Connector Anti-kink	6 mm outside diameter - 4 mm inside diameter	
AA11AK8/6	Tube Connector Anti-kink	8 mm outside diameter - 6 mm inside diameter	

Suitable for use with: [Mini Couplings](#)

Specially designed and developed by PCL suitable for most general compressed air applications where this adaptor profile is required.

FEATURES

Robust slimline construction	Single action connection
Steel construction with corrosive resistant finish	
Nominal bore: 5.5 mm	Flow rate @ 6 bar (0.5 bar p.d.): 650 l/min
Maximum working pressure: 14 bar / 200 psi	Temperature range: -40°C to 100°C

PART NUMBER	THREAD TYPE	THREAD SIZE	INTERCHANGEABLE
AC61CM	Male	R 1/4	ARO 210 Cejn 300
AC61EM	Male	R 3/8	JWL 522/532 Rectus 14/22
AC61JM	Male	R 1/2	Schrader Euro
AC61CF	Female	Rp 1/4	
AC61EF	Female	Rp 3/8	
AC61JF	Female	Rp 1/2	
AC61R	Hose Tailpiece	7 mm	
AC61S	Hose Tailpiece	8 mm	
AC61T	Hose Tailpiece	10 mm	

Suitable for use with: [Euro Adaptors](#)



Euro Adaptors

Specially designed and developed by PCL suitable for most general compressed air applications where this adaptor profile is required.

FEATURES

Steel construction with corrosive resistant finish	Suitable for general compressed air applications
Nominal bore: 5.5 mm	Flow rate @ 6 bar (0.5 bar p.d.): 650 l/min
Maximum working pressure: 14 bar / 200 psi	Temperature range: -40°C to 100°C

PART NUMBER	THREAD TYPE	THREAD SIZE	INTERCHANGEABLE
ACA6923	Male	R 1/4	ARO 210 Cejn 300
ACA6924	Female	Rp 1/4	JWL 522/532 Rectus 14/22
ACA6912	Hose Tailpiece	6.35 mm / 1/4 in	Schrader Euro
ACA6922	Hose Tailpiece	7.9 mm / 5/16 in	
ACA6930	Hose Tailpiece	9.5 mm / 3/8 in	

Suitable for use with: [Euro Couplings](#)



PF Couplings



This coupling range has been designed and manufactured in Sheffield by PCL to offer a competitive alternative to the genuine Schrader range.

FEATURES

Lightweight construction	Superior flow characteristics
Corrosive resistant finish	Competitive alternative to Schrader Couplings
Nominal bore: 5.0 mm	Flow rate @ 6 bar (0.5 bar p.d.): 2.200 l/min
Maximum working pressure: 35 bar / 508 psi	Temperature range: -40°C to 100°C

PART NUMBER	THREAD TYPE	THREAD SIZE	INTERCHANGEABLE
AC77CM	Male	R 1/4	Cejn 317
AC77EM	Male	R 3/8	Rectus 17
AC77JM	Male	R 1/2	Schrader Standard
AC77CF	Female	Rp 1/4	
AC77EF	Female	Rp 3/8	
AC77JF	Female	Rp 1/2	
AC7706	Hose Tailpiece	6 mm	
AC7708	Hose Tailpiece	8 mm	
AC7710	Hose Tailpiece	10 mm	
AC7713	Hose Tailpiece	13 mm	

Suitable for use with: [PF Adaptors](#)

PF Adaptors



This adaptor range has been designed and manufactured in Sheffield by PCL to offer a competitive alternative to the genuine Schrader range.

FEATURES

Corrosive resistant finish	Case hardened for longer life
Nominal bore: 5.0 mm	Flow rate @ 6 bar (0.5 bar p.d.): 2.200 l/min
Maximum working pressure: 35 bar / 508 psi	Temperature range: -40°C to 100°C

PART NUMBER	THREAD TYPE	THREAD SIZE	INTERCHANGEABLE
AA7702	Male	R 1/4	Cejn 317
AA7703	Male	R 3/8	Rectus 17
AA7706	Female	Rp 1/4	Schrader Standard
AA7707	Female	Rp 3/8	
AA7710	Hose Tailpiece	6 mm	
AA7711	Hose Tailpiece	8 mm	
AA7712	Hose Tailpiece	10 mm	

Suitable for use with: [PF Couplings](#)

ISO B12 Couplings

Designed and manufactured in Sheffield by PCL. This range of couplings offers excellent flow characteristics for industrial applications where this adaptor profile is required.

FEATURES

Offers enhanced tool efficiency	Steel construction with corrosive resistant finish
Steel shoulder helps prevent accidental disconnection	Offers excellent flow characteristics
Nominal bore: 5.5 mm	Flow rate @ 6 bar (0.5 bar p.d.): 1,100 l/min
Maximum working pressure: 35 bar / 508 psi	Temperature range: -40°C to 100°C

PART NUMBER	THREAD TYPE	THREAD SIZE	INTERCHANGEABLE
AC75CM	Male	R 1/4	Cejn 310 Hanson 3000 Legris 24 Rectus 23/24
AC75EM	Male	R 3/8	
AC75JM	Male	R 1/2	
AC75CF	Female	Rp 1/4	
AC75EF	Female	Rp 3/8	
AC75JF	Female	Rp 1/2	
AC7506	Hose Tailpiece	6 mm	
AC7508	Hose Tailpiece	8 mm	
AC7510	Hose Tailpiece	10 mm	
AC7513	Hose Tailpiece	13 mm	

Suitable for use with: [ISO B12 Adaptors](#)



ISO B12 Adaptors

Designed and manufactured in Sheffield by PCL. This range of adaptors offers excellent flow characteristics for industrial applications where this adaptor profile is required.

FEATURES

Steel construction with corrosive resistant finish	Offers excellent flow characteristics
Nominal bore: 5.5 mm	Flow rate @ 6 bar (0.5 bar p.d.): 1,100 l/min
Maximum working pressure: 35 bar / 508 psi	Temperature range: -40°C to 100°C

PART NUMBER	THREAD TYPE	THREAD SIZE	INTERCHANGEABLE
AA7502	Male	R 1/4	Cejn 310 Hanson 3000 Legris 24 Rectus 23/24
AA7503	Male	R 3/8	
AA7504	Male	R 1/2	
AA7506	Female	Rp 1/4	
AA7507	Female	Rp 3/8	
AA7508	Female	Rp 1/2	
AA7510	Hose Tailpiece	6 mm	
AA7511	Hose Tailpiece	8 mm	
AA7512	Hose Tailpiece	10 mm	
AA7513	Hose Tailpiece	13 mm	

Suitable for use with: [ISO B12 Couplings](#)



Air Tools

Air Tool Accessories

Nitrogen Inflation Equipment

Tyre Inflation Equipment

Tyre Care

Workshop Accessories

Hose

Hose Fittings

Couplings & Adaptors

KF Couplings



This range of couplings offers excellent flow characteristics ideal for portable air tool and industrial applications where this adaptor profile is required.

FEATURES

Offers enhanced tool efficiency
Steel shoulder helps prevent accidental disconnection

Steel construction with corrosive resistant finish
Offers excellent flow characteristics

Nominal bore: 7.6 mm

Flow rate @ 6 bar (0.5 bar p.d.): 2.100 l/min

Maximum working pressure: 35 bar / 508 psi

Temperature range: -40°C to 100°C

PART NUMBER	THREAD TYPE	THREAD SIZE	INTERCHANGEABLE
AC78CM	Male	R 1/4	Cejn 314/315 Nitto Kohki 200 Rectus 13
AC78EM	Male	R 3/8	
AC78JM	Male	R 1/2	
AC78CF	Female	Rp 1/4	
AC78EF	Female	Rp 3/8	
AC78JF	Female	Rp 1/2	
AC7806	Hose Tailpiece	6 mm	
AC7808	Hose Tailpiece	8 mm	
AC7810	Hose Tailpiece	10 mm	
AC7813	Hose Tailpiece	13 mm	

Suitable for use with: [KF Adaptors](#)

KF Adaptors



This range of couplings offers excellent flow characteristics ideal for portable air tool and industrial applications where this adaptor profile is required.

FEATURES

Corrosive resistant finish

Hardened steel case for longer life

Nominal bore: 7.6 mm

Flow rate @ 6 bar (0.5 bar p.d.): 2.100 l/min

Maximum working pressure: 35 bar / 508 psi

Temperature range: -40°C to 100°C

PART NUMBER	THREAD TYPE	THREAD SIZE	INTERCHANGEABLE
AA7802	Male	R 1/4	Cejn 314/315 Nitto Kohki 200 Rectus 13
AA7803	Male	R 3/8	
AA7804	Male	R 1/2	
AA7806	Female	Rp 1/4	
AA7807	Female	Rp 3/8	
AA7808	Female	Rp 1/2	
AA7810	Hose Tailpiece	6 mm	
AA7811	Hose Tailpiece	8 mm	
AA7812	Hose Tailpiece	10 mm	
AA7813	Hose Tailpiece	13 mm	

Suitable for use with: [KF Couplings](#)

Standard Schrader Couplings

Schrader couplings and adaptors, manufactured by Parker Pneumatics, generally suitable for most fixed compressed air applications.

FEATURES

Twist locking feature
When coupled the adaptor can swivel, thereby eliminating hose kinks

Nominal bore: 5.0 mm
Flow rate @ 6 bar (0.5 bar p.d.): 900 l/min

Maximum working pressure: 17 bar / 250 psi
Temperature range: -20°C to 80°C

PART NUMBER	SCHRADER REFERENCE	THREAD TYPE	THREAD SIZE	INTERCHANGEABLE
ACS102	9793D-12	Male	R 1/4	Cejn 317 Rectus 17
ACS103	9792D-12	Male	R 3/8	
ACS101	8952DL-12	Female	G 1/4	

Suitable for use with: [Standard Schrader Adaptors](#)



Standard Schrader Adaptors

Genuine Schrader adaptors (manufactured by Parker Pneumatics) and compatible adaptors are generally suitable for most fixed compressed air applications.

FEATURES

Corrosive resistant finish
Case hardened for longer life

Nominal bore: 5.0 mm
Flow rate @ 6 bar (0.5 bar p.d.): 900 l/min

Maximum working pressure: 17 bar / 250 psi
Temperature range: -20°C to 80°C

PART NUMBER	SCHRADER REFERENCE	THREAD TYPE	THREAD SIZE	INTERCHANGEABLE
ACAS104	8050B-11	Male	R 1/4	Cejn 317 Rectus 17
ACAS105	8278L-11	Female	Rp 1/4	
ACAS101	8787-11	Hose Tailpiece	6 mm / 1/4 in	
ACAS103	9750-11	Hose Tailpiece	8 mm / 5/16 in	
ACAS102	8788-11	Hose Tailpiece	10 mm / 3/8 in	

Suitable for use with: [Standard Schrader Couplings](#)



Air Tools

Air Tool Accessories

Nitrogen Inflation Equipment

Tyre Inflation Equipment

Tyre Care

Workshop Accessories

Hose

Hose Fittings

Couplings & Adaptors

Heavy Duty Schrader Couplings



Genuine Schrader heavy duty couplings (manufactured by Parker Pneumatics) and adaptors are generally suitable for most fixed compressed air applications.

FEATURES

Twist locking feature	When coupled the adaptor can swivel, thereby eliminating hose kinks
Nominal bore: 8.5 mm	Flow rate @ 6 bar (0.5 bar p.d.): 500 l/min
Maximum working pressure: 17 bar / 250 psi	Temperature range: -20°C to 80°C

PART NUMBER	SCHRADER REFERENCE	THREAD TYPE	THREAD SIZE	INTERCHANGEABLE
ACS202	1054EL-12	Female	G 1/4	Cejn 499 Rectus 68
ACS203	1095EL-12	Female	G 3/8	
ACS201	1461EL-12	Female	G 1/2	

Suitable for use with: [Heavy Duty Schrader Adaptors](#)

Heavy Duty Schrader Adaptors



Genuine Schrader couplings (manufactured by Parker Pneumatics) and adaptors are generally suitable for most fixed compressed air applications.

FEATURES

Corrosive resistant finish	Case hardened for longer life
Nominal bore: 8.5 mm	Flow rate @ 6 bar (0.5 bar p.d.): 500 l/min
Maximum working pressure: 17 bar / 250 psi	Temperature range: -20°C to 80°C

PART NUMBER	SCHRADER REFERENCE	THREAD TYPE	THREAD SIZE	INTERCHANGEABLE
ACAS204	8624B-11	Male	R 1/4	Cejn 499 Rectus 68
ACAS205	9739-11	Male	R 3/8	
ACAS203	8807-11	Male	R 1/2	
ACAS206	1261L-11	Female	G 1/4	
ACAS207	1096B-11	Female	G 3/8	
ACAS201	1097-11	Hose Tailpiece	10 mm / 3/8 in	
ACAS202	1098-11	Hose Tailpiece	12 mm / 1/2 in	

Suitable for use with: [Heavy Duty Schrader Couplings](#)

Emergency coupling kit

NEW



Designed for the service engineer or to keep in a workshop in case of a pneumatic airline failure, this small, compact kit contains all the parts you would need to repair any standard airline failure.

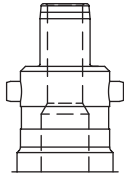
FEATURES

Includes couplings, adaptors, hose tails, hose connectors, hose clips and PTFE tape to convert or repair an airline connection	Solid 'pocket' case with item part no's and descriptions on the underside
Ideal to keep in a van or workshop	

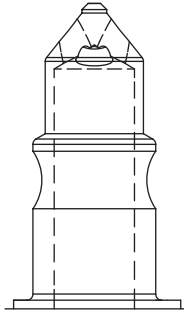
PART NUMBER	INCLUDES PART NUMBERS
ACKIT01	AC91CM x 1, AC91CF x 1, ACA2593 x 2, ACA2746 x 2, HC6560 x 1, HC6892 x 1, HC6893 x 1, HC5656 x 1, HC1217 x 1, HC2479 x 1, HC6895 x 1, HC6896 x 1, OOO x 2, OO x 2, PTFE tape x 1

The adaptor profiles displayed are actual size - just place your adaptor on the matching drawing to find its interchange.

INSTANTAIR RANGE



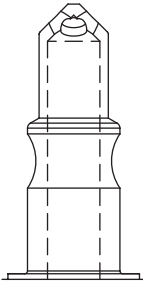
100 SERIES



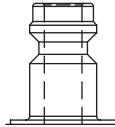
SCALE



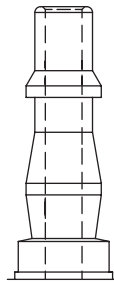
60 SERIES



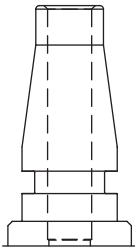
MINI RANGE



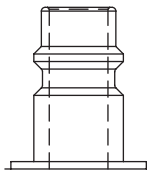
STANDARD RANGE



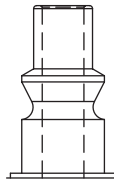
HEAVY DUTY SCHRADER



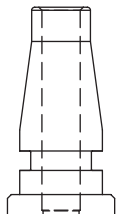
XF RANGE



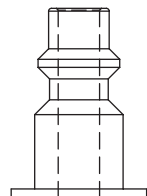
EURO RANGE



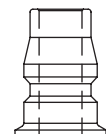
PF RANGE



ISO B12 RANGE



KF RANGE



PART	PAGE	PART	PAGE	PART	PAGE	PART	PAGE	PART	PAGE	PART	PAGE	PART	PAGE
DAC1A03	46	HA2144	74	HC6899	83	JC3245	85	OC3134	86	PSE601	88	W	
DAC1A06	46	HA2149	31	HC6900	83	JC3245/ST	85	OC3141	86	PSE602	88	WM1H01	41
DAC1A08	46	HA2149	75	HC6901	83	JC3550	85	OC3437	86	PSE801	88	WM1H02	41
DAC51A	55	HA2150	74	HC6904	82	JC3550/ST	85	OC3545	86	PSE802	88	WM2H01	41
DAC51C	55	HA2152	74	HC6905	82	JC4055	85	OC3740	86	PSE803	88	WM2H02	41
DAC54A	55	HA2155	31	HC6908	82	JC4055/ST	85	OC4043	86	PSG142130	68	WM3H02	41
DAC54C	55	HA5201	76	HC9336	82	JC4560	85	OC4346	86	PSR1012	89	WM3H05	41
DPG1H03	53	HA5209	76	HC9560	84	JC4560/ST	85	OE147160	69	PSR46	89	WP143	87
DPG1H08	53	HA5210	76	HC9573	84	JC5570	85	OX175	87	PSR48	89	0-9	
DPG3H03	53	HA5211	76	HP100	87	JC5570/ST	85	OX175P	87	PSR610	89	012 031 011	21
DPG3H08	53	HA5212	76	HRA1B03	78	JC6080	85	P		PSR612	89	012 043 011	21
DTDG1D04	55	HA5213	76	HRA2T	78	JC6080/ST	85	P10H02	42	PSR68	89		
DTI08	46	HA5214	76	HRA3J01	77	JC7090	85	PD0900T8R	63	PSR810	89		
DTI081	46	HA5216	76	HRA3M5	77	JC7090/ST	85	PD01500S	63	PSR812	89		
DTPG7	54	HA5217	76	HRA3V01	77	JC85100	85	PD02000S	63	Q			
DTPG8	54	HA5218	76	HRA4J01	78	JC85100/ST	85	PD0200A	62	QUBE1	42		
DUSG1	53	HA5219	76	HRA4J02	78	JC90120	85	PD0300S	63	QUBE2	42		
E		HA5220	76	HRA4U01	78	JC90120/ST	85	PD04000T	63	QUBE3	42		
EMS001	32	HA5221	76	HRA5F01	78	JC9512	85	PD060S	63	QUBE4	42		
F		HC1205	82	HRA5J01	78	JC9512/ST	85	PD0600A	62	R			
FDR1	86	HC1206	82	HRA5W01	78	L		PD0600S	63	RF104	69		
FE101	83	HC1217	82	HS22*01	72	LTG01	45	PD08000T	63	RPR1H02	53		
FP4H02/3	55	HC1225	82	HS24*01	72	M		PD0900S	63	S			
FP7H02/3	55	HC1226	82	HS25*01	72	MA001	56	PD0AD128	62	SBG145100	68		
FPA02	48	HC2003-1/2	84	HS27*01	72	MTG310	32	PEE10	88	SC21CF	93		
G		HC2003-1/4	84	I		MTG311	32	PEE12	88	SC21CM	93		
GRS001	32	HC2003-3/8	84	INF6	61	MTG510	32	PEE4	88	SC21EF	93		
H		HC2013-1/2	84	J		MTG511	32	PEE6	88	SC21EM	93		
HA2002	73	HC2013-1/4	84	JC110140	85	N		PEE8	88	SC21JF	93		
HA2004	73	HC2013-3/8	84	JC110140/ST	85	NZA001	37	PET10	89	SC21JM	93		
HA2012	73	HC2043-1/2	84	JC1116	85	N2AS001	37	PET12	89	SC21R	93		
HA2017	73	HC2181	82	JC1116/ST	85	NEX2G	37	PET4	89	SC21S	93		
HA2019	73	HC2192	82	JC120150	85	NEX2I	37	PET6	89	SC21T	93		
HA2021	73	HC2192/2181	82	JC120150/ST	85	NEX2I/MQ	37	PET8	89	SG01L	67		
HA2023	73	HC2479	82	JC1320	85	NEX6G	37	PH1H01	42	SG01P	67		
HA2043	73	HC2543-1/2	84	JC1320/ST	85	NEX6I	37	PM1H01	41	SG02L	67		
HA2044	73	HC2543-3/8	84	JC135165	85	NEX6I/MQ	37	PM1H02	41	SG02P	67		
HA2044HV	73	HC2594	82	JC135165/ST	85	NEXMG	37	PMS1002	88	SPK109	67		
HA2045	73	HC2595	82	JC158190	85	NEXMI	37	PMS1003	88	SPR4279	84		
HA2046	73	HC2595/HC2181	82	JC158190/ST	85	NEXMI/MQ	37	PMS1004	88	SPR4280	84		
HA2046HV	73	HC2808	82	JC1622	85	O		PMS1202	88	T			
HA2108	31	HC2951	82	JC1622/ST	85	OC0305	86	PMS1203	88	TDG16C01	54		
HA2109	31	HC2954	82	JC1825	85	OC5057	86	PMS1204	88	TE2H01	47		
HA2116	31	HC2983	83	JC1825/ST	85	OC0709	86	PMS401	88	TPG1H17	52		
HA2124N	31	HC2984	83	JC184216	85	OC0811	86	PMS402	88	TPG20H01	52		
HA2125	74	HC2985	83	JC184216/ST	85	OC0911	86	PMS601	88	TPG20H17	52		
HA2128	74	HC2986	83	JC210242	85	OC1113	86	PMS602	88	TPG4H17	52		
HA2129	74	HC4281	83	JC210242/ST	85	OC1315	86	PMS801	88	TPG54H03	53		
HA2132	31	HC5030	82	JC2230/ST	85	OC1517	86	PMS802	88	TPG57H03	53		
HA2133	74	HC5194	82	JC235267	85	OC1518	86	PMS803	88	TPG60H03	53		
HA2134	74	HC5275	82	JC235267/ST	85	OC1619	86	PMS04M5	88	TRN-6/4-	72		
HA2135	74	HC5275/5194	82	JC2535	85	OC1720	86	PSE1002	88	TRN-10/8-	72		
HA2137	74	HC5276	82	JC2535/ST	85	OC1922	86	PSE1003	88	TRN-12/10-	72		
HA2138	74	HC52776/5194	82	JC260292	85	OC2023	86	PSE1004	88	TRN-4/2.5-	72		
HA2139	74	HC5656	82	JC260292/ST	85	OC2225	86	PSE1202	88	TRN-8/6-	72		
HA2140	75	HC6475	83	JC286318	85	OC2327	86	PSE1203	88	TRS001	32		
HA2141	75	HC6560	83	JC286318/ST	85	OC2528	86	PSE1204	88	TSP1T15	54		
HA2142	75	HC6889	84	JC3040	85	OC2731	86	PSE401	88	TSP20T15	54		
HA2143	75	HC6898	83	JC3040/ST	85	OC2831	86	PSE402	88	TVT01	56		

All orders are subject to our standard terms and conditions – available on request. In line with our continuous improvement programme, we reserve the right to amend or revise the specification of our products without prior notice. Published July 2015. E. & O.E.

Pneumatic Components Limited

Holbrook Rise, Holbrook Industrial Estate, Sheffield S20 3GE, United Kingdom

T +44 (0)114 248 2712 F +44 (0)114 247 8342 info@pclairtechnology.com